



REST Journal on Advances in Mechanical Engineering

Vol: 4(3), September 2025

REST Publisher; ISSN: 2583-4800 (Online)

Website: <https://restpublisher.com/journals/jame/>

DOI: <https://doi.org/10.46632/jame/4/3/1>



Modeling Distribution Automation System Components Using IEC 61850 Using ARAS Method

Anusuya Mohan, Soniya Sriram, Vimala Saravanan, M. Ramachandran

REST Labs, Kaveripattinam, Krishnagiri, Tamil Nadu, India.

*Corresponding Author Email: anusuyarsri2000@gmail.com

Abstract: *This paper offers a comprehensive overview and analysis of Power System Automation, focusing on its implications for security. It delves into the implementation of advanced SAS systems, emphasizing their role in enhancing monitoring, control, and security through cutting-edge computerized functionalities. By employing such systems, the paper suggests that the occurrence of failures can be significantly minimized, thus improving overall reliability. In today's reorganized electricity markets, the provision of power is automated, and control holds significant importance. However, errors in distribution systems are unavoidable due to their unpredictable nature. Therefore, accurate access to data is crucial in such scenarios. The consolidation of power control and internet usage within automation systems necessitates thorough examination of security concerns, control frameworks, and susceptibilities inherent in current systems. Additionally, evaluating potential assessment methods is imperative. This paper provides an overview of these aspects, emphasizing the challenges in establishing a unified language and achieving interoperability. Despite its complexity, progress towards this objective is evident through initiatives such as the development of the IEC 61850 standard. This paper delves into the realm of wide-area Distribution Automation (DA) strategies, highlighting their relevance in computerized power system operations and discussing potential ramifications. Emphasis is placed on voltage stability analysis, covering stable methods such as Voltage Stability Analysis (VSA) and Dynamic Voltage Stability Analysis (DVSA), alongside other contemporary analytical approaches. A comprehensive review of current research endeavors in this domain is provided, culminating in an exploration of anticipated future growth trends. The initial conditions outlined in the overview indicate the progression of the ARAS system's development, accompanied by emerging challenges. It suggests a need for refining analytics for future application and enhancing the methodology for more efficient and effective results, ensuring comprehensive guidance can be offered. The article introduces a novel method for estimating enrollment rates, known as ARAS. To elucidate this method, a real-life case study assessing the microclimate in office spaces is provided as an illustration. A newly introduced hierarchy with four tiers utilizes tourist destination brands and employs the ARAS-H method to evaluate websites. This article introduces an application of this method, but it acknowledges that the depiction provided may lack clarity. Essentially, the ARAS method is widely utilized and can be adopted by any company. However, this article specifically focuses on extending the ARAS system, highlighting a potential issue with ambiguous interval values resulting from numerical representations. To address practical challenges effectively, a more suitable approach is necessary. Predictive Maintenance is showing the highest rank and Monitoring and Control is showing the lowest rank.*

Keywords: *Monitoring and Control, Fault Detection and Management, Load Management, Predictive Maintenance and Enhanced Grid Resilience.*

1. INTRODUCTION

Digital communications play a crucial role in the efficient functioning of electricity utility networks. While power transmission remains the primary focus, the integration of digital communication infrastructure has become indispensable. Without substantial redundancy, the seamless operation of interconnected power systems would be

impossible. Technology is advancing rapidly, and in the future, it's conceivable that all the mentioned devices could merge into one versatile unit capable of power system automation and handling any control function subcommittee tasks [1]. The operational presence of substations holds significant strategic value in power system design. These substations play a crucial role in ensuring the functionality of the system by offering multiple access points for monitoring and controlling various system parameters. Their geographical distribution enables the aggregation of power from diverse sources, facilitating efficient system performance monitoring. Additionally, they are pivotal in controlling and securing the power network while activating essential functions as needed [2]. However, enhancing power quality and ensuring a dependable distribution system are crucial due to growing demand. Achieving these qualities hinges on the effectiveness of an automated distribution system [3]. The Smart Grid offers enhanced functionalities that can greatly enhance power grid reliability and safety. It also presents cost-effective solutions for consumers and optimizes the grid's full capacity efficiently. Furthermore, aside from its primary utility, it has the potential to mitigate environmental impacts [4]. Computer and communication equipment, along with power plants, substations, Energy Control Centers, Corporate Headquarters, and Regional Operating Offices, are extensively deployed in significant load sites. These systems and devices are interconnected and intricate in nature. The interdependency of computer, communication, and electrical infrastructure is crucial within the electrical grid [5]. Advanced features developed as part of the program encompass a range of analytical tools such as load estimation, fault location, power flow analysis, short circuit analysis, restoration, and Volt/Var support for distribution feeders. These tools are integral for evaluating and enhancing the performance of distribution systems [6]. Assessing the completeness of the power system community involves exploring potential applications and the utilization of advanced research to leverage coherence phasor data in distribution networks. This endeavor requires a multidisciplinary approach, integrating expertise from various fields such as electrical engineering, data science, and signal processing. By harnessing cutting-edge research methodologies, we can unlock the full potential of coherence phasor data and develop innovative solutions to enhance the efficiency, reliability, and resilience of distribution networks [7]. Various manufacturers' devices can be seamlessly installed and immediately collaborate within the application context through standardized communication protocols. Following thorough research and multiple meetings, the International Electro Technical Commission (IEC) established the IEC TC 57 Substation Automation standard, known as IEC 61850. This standard revolutionizes the concept of automation in substations, facilitating the integration of various Intelligent Electronic Devices (IEDs). Consequently, a substantial amount of data can be efficiently exchanged between these devices, enhancing operational efficiency and reliability in substation environments [8]. As distribution systems grow in complexity, there is a greater likelihood of enhancing credibility. Employing multiple methods to bolster the reliability of a single application enables the utilization of alternative sources. However, traditional wide area control systems may potentially diminish the efficacy of security protocols. The function of a distribution system encompasses human involvement in both control centers and field operations, necessitating interactions with operators [9]. Voltage stability can be categorized based on the extent of disruptions it faces. It can be classified into constant voltage stability and large disturbance voltage stability. Constant voltage stability refers to the ability to sustain or restore system voltage levels, while large disturbance voltage stability pertains to managing significant voltage fluctuations [10]. A standard setup for an island power grid involves the operation of at least one generation unit to provide electricity to the electrical system. The main focus is on managing load parameters and regeneration conditions. Understanding the impact of these parameters is crucial, particularly during dynamic phases within the power sector [11]. The correlation between human-automation collaboration quality and the performance of joint human-machine systems was investigated further, but conclusive findings were not obtained. However, the rise of automated design signifies enhanced computer autonomy, indicating a boost in capability. Consequently, in future systems, the aspect of cooperation between humans and automation is anticipated to become increasingly crucial [12]. The fundamental concept behind a replay attack entails taking previously captured data, altering it in any way, and resending it to the recipient without any modification. If the attacker understands how the data functions, they can deceive the recipient by resending the data without necessarily knowing its original content [13]. Increasing switching speed accompanies the rising energy density, driving pressure to enhance automation in design tools. This pressure is particularly pronounced in modern integrated power systems, which are diverse during design iterations. Achieving high performance and compact designs necessitates multivariable optimization to tackle various challenges. Consequently, there's a growing emphasis on design automation to achieve greater integration in the development of power electronics equipment [14]. The cornerstone of smart grids, essential for their deployment, involves rephrasing data into actionable insights. The automation of tasks within the power grid allows for programming and utilization of its operational features to their maximum potential. Maintaining a constant understanding of the grid's dynamics is crucial, especially in the case of medium voltage (MV) distribution networks (TNs), where challenges escalate due to their extensive coverage and significant branching [15].

2. MATERIALS AND METHOD

Monitoring and Control: In the phase of project management focused on monitoring and control, the emphasis lies on overseeing the implementation of the project. This involves closely observing the post-implementation process, identifying any arising issues or potential hazards, and implementing strategies to control and mitigate them effectively.

Fault Detection and Management: Fault management, as part of IT operations, falls under the administrative umbrella. Its primary role involves recognizing and pinpointing issues while prioritizing assessment. This entails monitoring configuration items (CIs) for any disruptions or anomalies that hinder proper functioning or impede service delivery.

Load Management: Load management involves the manipulation of physical stress on the musculoskeletal system to safeguard metabolic well-being. It encompasses strategies aimed at enhancing athletic performance and overall physiological function by intentionally imposing temporary reductions in stressors.

Predictive Maintenance: Enhancing productivity and efficiency can be achieved through the adoption of AI-driven predictive maintenance strategies. For instance, by leveraging AI technology to foresee potential machine breakdowns, proactive maintenance can be scheduled precisely where it's required. This proactive approach enables long-term planning of maintenance efforts and effectively curtails repair expenses.

Enhanced Grid Resilience: The creators, organizers, and managers envision, get ready for, and are adaptable to evolving grid circumstances, capable of enduring significant power interruptions, and capable of responding to and bouncing back from them rapidly.

Cost Effectiveness: Cost-effectiveness analysis involves comparing the costs and health outcomes of one or more interventions. It explores how one intervention compares to another intervention or the current status. This comparison typically considers factors such as life expectancy, years of healthy life gained, or the number of deaths prevented. The aim is to calculate the cost required to achieve a certain unit of output, such as an additional year of life or averted cases of illness, thus assessing the efficiency of each intervention in terms of resource allocation.

Performance Metrics: Emphasizing quality over quantity is paramount. In terms of assessing employee effectiveness, overall performance serves as the most reliable indicator. Performance, within a specific timeframe, yields cumulative results that significantly influence the success of a business.

User Experience and Training: It's essential for everyone to grasp fundamental principles, such as user experience (UX), which revolves around enhancing digital products to meet company objectives while satisfying users. This approach emphasizes creating products that bring joy to users, encompassing strategies for effective implementation. Nonetheless, delving into UX can present significant challenges and complexities.

Environmental Impact: The well-being of humans is intricately linked to the environment, which exerts a significant influence. A quarter of fatalities are attributed to extreme heat, inadequate air and water conditions, as well as disease outbreaks and food scarcities, all of which are closely tied to environmental conditions.

ARAS Method: The evolution of the ARAS method can be outlined in three main aspects: examination of decision-making processes, assessment within various informational contexts, and integration with complementary methodologies. Additionally, the ARAS method finds practical utility across diverse sectors such as Agriculture, Industry, Services, and Information Technology, with specific applications elucidated within each domain [16]. Real-life decision-making challenges tend to be intricate and lack clear structure, often necessitating various perspectives to achieve optimal outcomes. Operating within competitive markets and navigating potential bankruptcy scenarios demands a certain level of expertise and understanding [17]. However, within the MCDA literature, there is a scarcity of approaches that incorporate problem decomposition when ranking criteria. Decision-making hierarchies are commonly utilized, yet only a few methods take into account the decomposition of problems. Consequently, drawing from the MCHP concept, we propose a step-by-step adaptation of the ARAS method. The paper is structured into six sections to delineate our approach [18]. In real-life situations, decision-making often involves dealing with complex problems. One method used for addressing such problems is the Augmented Reality Attribute-based Synthesis (ARAS) method. This study introduces an enhanced version of the ARAS method. The existing nine-state-of-the-art image is somewhat unclear or ambiguous, so a novel comparative analysis is conducted with Multiple Criteria Decision Making (MCDM) methods. A figure is presented to validate the effectiveness of the Fuzzy ARAS method. Additionally, Spearman's rank correlation coefficients are calculated to assess the consistency between the developed Fuzzy ARAS method and other MCDM methods based on the Probabilistic Fuzzy Sets (PFS) [19]. Distinctive features of body condition, encompassing a range of professional endeavors, serve as a crucial component for successful

execution. Evaluating the effectiveness of this implementation hinges on adhering to certain prerequisites. In the realm of security guarding, professionalism is gauged through the assessment of physical prowess, psychomotor and cognitive capabilities, as well as essential character traits and skills [20]. After its introduction, Fuzzy Sets Theory has significantly influenced real-world decision-making processes. Its application has led to enhanced problem-solving abilities, particularly in scenarios where conventional methods fall short. Notably, progress in this area has been evident, with a focus on employing triangular or trapezoidal shapes to represent fuzzy sets. Fuzzy numbers, a fundamental component of this theory, have also been introduced, although their modeling complexity is noteworthy. Nonetheless, despite their intricacies, fuzzy numbers prove to be highly effective in addressing decision-making challenges [21]. In the ARAS method, when it comes to specifying complex comparison requirements, a utility function is utilized. This involves objectively evaluating the project and comparatively selecting criteria, with values and weights being directly proportional. However, in real-world scenarios, particularly within project environments, uncertainties and ambiguities of various types often exist [22]. The Admission Rate Assessment Under Context (ARAS) method introduces an extension, applied to address the ELV (End-of-Life Vehicle) recycling facility location problem, employing a novel approach. Notably, the interval provided is characterized by type-2 ambiguity, indicating uncertainty or multiple interpretations. Furthermore, the versatile capabilities of the ARAS method are demonstrated, showcasing its relevance in various contexts. Additionally, the essence of Istanbul's real-life character is exemplified throughout the case study [23]. The Constitution delineates the autonomy of state governments, including the appointment of a Superintendent for State Police Forces. This individual, commonly known as the Director General of Police (DGP), assumes leadership over the state's police force. The DGP offers guidance to the police administration within the state and advises the government on matters concerning law enforcement. It is the responsibility of the State Government to furnish resources for the police force, resulting in significant disparities in police operations from one state to another [24]. The primary aim involves creating a fresh method called Admission Ratio Assessment (ARAS), which incorporates panel-based multiple criteria for evaluating admission ratios. This approach addresses uncertainties in decision-making and enriches the field by introducing new techniques for handling uncertainty [25]. Reactive oxygen radicals are implicated as the primary culprit behind cardiovascular diseases, as well as contributing factors in aging, cancer, and complications related to diabetes. Oxidative stress, observed in conditions like Alzheimer's disease and type II diabetes, stems largely from the activity of these free radicals. Their excessive production is often cited as the leading cause of various detrimental effects on health [26]. Given that the control loop is fundamental to the system's functionality, enhancing precision is paramount, especially in underwater vehicles such as ROVs and AUVs. These vehicles typically rely on electric DC motors to power their thrusters, which in turn are responsible for propulsion. Consequently, the efficacy of the system hinges on practical modeling techniques that consider the interplay between motor dynamics, propeller design, and hydrodynamic effects [27]. Each method discussed in this article is utilized to examine the characteristics of object detection tasks and to extract results. It bears resemblance to the object detection task itself. Congenital LBP, while reversible, is also investigated for its variations. Each variation in LBP performance has its distinct features, benefits, and drawbacks [28]. In finite elements, functions represent the nodal behavior of a physical field, determined by their values at specific points. The primary challenge in physics lies in resolving the unknowns associated with these nodal values. This problem is tackled by converting it into a finite element problem. Linear algebra techniques are then employed to develop a system of equations that encapsulate the physics of the system. Finally, numerical methods are used to solve this system and obtain solutions for the nodal values, particularly in cases involving linear problems [29]. Data mining encompasses statistical methods alongside neural networks, decision trees, and genetic algorithms. Over the years, there has been significant development in paraphrasing and visualization techniques. These techniques involve various methodologies such as fuzzy compatibility index to determine ranking values. Additionally, subjective criteria from decision makers are integrated into linguistic assessments. This integration marks the initial step in employing this method for assessments [30].

3. ANALYSIS AND DISCUSSION

TABLE 1. Power System and its Automation

	Cost Effectiveness	Performance Metrics	User Experience and Training	Environmental Impact
Monitoring and Control	150	48	121	68
Fault Detection and Management	300	25	325	34
Load Management	150	75	200	101
Predictive Maintenance	165	60	165	201
Enhanced Grid Resilience	105	89	170	85

Table 1 shows the Power System and its Automation for Analysis using ARAS Method. Monitoring and Control, Fault Detection and Management, Load Management, Predictive Maintenance and Enhanced Grid Resilience. Cost Effectiveness, Performance Metrics, User Experience and Training and Environmental Impact is the evaluation.

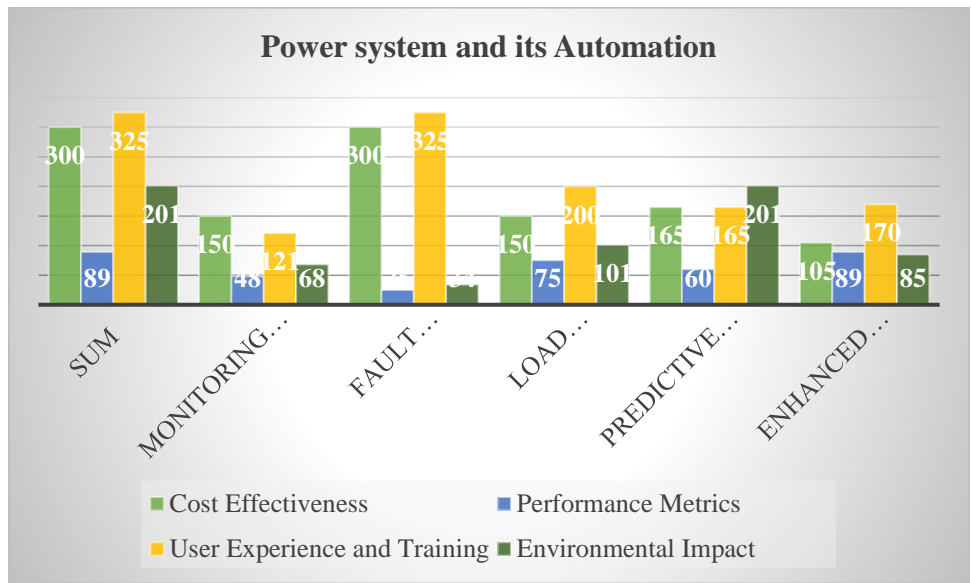


FIGURE 1. Power System and its Automation

Figure 1 shows the Power System and its Automation for Analysis using ARAS Method. Monitoring and Control, Fault Detection and Management, Load Management, Predictive Maintenance and Enhanced Grid Resilience. Cost Effectiveness, Performance Metrics, User Experience and Training and Environmental Impact is the evaluation. From the figure 1 and table 1 it is seen that Fault Detection and Management is showing the Highest Value for Cost Effectiveness and Enhanced Grid Resilience is showing the lowest value. Enhanced Grid Resilience is showing the Highest Value for Performance Metrics and Fault Detection and Management is showing the lowest value. Fault Detection and Management is showing the Highest Value for User Experience and Training and Monitoring and Control is showing the lowest value. Predictive Maintenance is showing the Highest Value for Environmental Impact and Fault Detection and Management is showing the lowest value.

$$X_{max} = \text{Max}(X_1 \dots X_n) \quad (1)$$

TABLE 2. Calculation of maximum value

	Cost Effectiveness	Performance Metrics	User Experience and Training	Environmental Impact
Max	300	89	325	201
Monitoring and Control	150	48	121	68
Fault Detection and Management	300	25	325	34
Load Management	150	75	200	101
Predictive Maintenance	165	60	165	201
Enhanced Grid Resilience	105	89	170	85

Table 2 shows the Calculation of maximum value Power System and its Automation for Analysis using ARAS Method. Monitoring and Control, Fault Detection and Management, Load Management, Predictive Maintenance and Enhanced Grid Resilience. Cost Effectiveness, Performance Metrics, User Experience and Training and Environmental Impact is the evaluation.

$$X_{1nor} = \frac{x_1}{\sum(x_1 + x_2 \dots x_n)} \quad (2)$$

TABLE 3. Normalized Matrix

	Cost Effectiveness	Performance Metrics	User Experience and Training	Environmental Impact
Max	0.25641	0.23057	0.248851	0.291304
Monitoring and Control	0.128205	0.124352	0.092649	0.098551
Fault Detection and Management	0.25641	0.064767	0.248851	0.049275
Load Management	0.128205	0.194301	0.153139	0.146377
Predictive Maintenance	0.141026	0.15544	0.12634	0.291304
Enhanced Grid Resilience	0.089744	0.23057	0.130168	0.123188

Table 3 shows the normalized matrix for Power System and its Automation for Analysis using ARAS Method. Monitoring and Control, Fault Detection and Management, Load Management, Predictive Maintenance and Enhanced Grid Resilience. Cost Effectiveness, Performance Metrics, User Experience and Training and Environmental Impact is the normalized values.

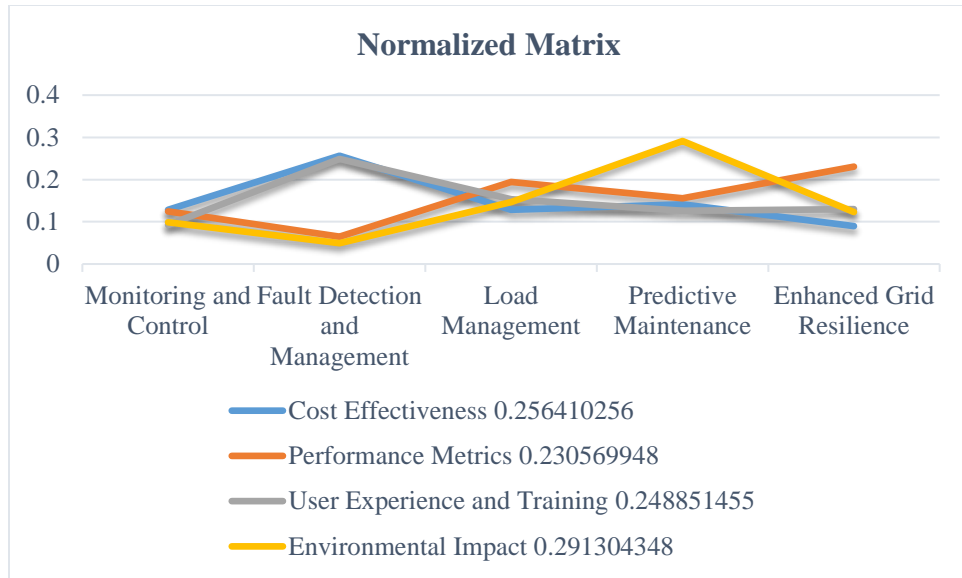


FIGURE 2. Normalized matrix

Figure 2 shows the normalized matrix for Power System and its Automation for Analysis using ARAS Method. Monitoring and Control, Fault Detection and Management, Load Management, Predictive Maintenance and Enhanced Grid Resilience. Cost Effectiveness, Performance Metrics, User Experience and Training and Environmental Impact is the normalized values.

$$X_{wnormal1} = X_{n1} \times w_1 \quad (3)$$

TABLE 4. Weighted Normalized Matrix

	Weighted Normalized Matrix			
	Cost Effectiveness	Performance Metrics	User Experience and Training	Environmental Impact
Max	0.064103	0.057642	0.062213	0.072826
Monitoring and Control	0.032051	0.031088	0.023162	0.024638
Fault Detection and Management	0.064103	0.016192	0.062213	0.012319
Load Management	0.032051	0.048575	0.038285	0.036594
Predictive Maintenance	0.035256	0.03886	0.031585	0.072826
Enhanced Grid Resilience	0.022436	0.057642	0.032542	0.030797

Table 4 shows the weighed normalized matrix for the shows the normalized matrix for Power System and its Automation for Analysis using ARAS Method. Monitoring and Control, Fault Detection and Management, Load Management, Predictive Maintenance and Enhanced Grid Resilience. Cost Effectiveness, Performance Metrics, User Experience and Training and Environmental Impact it is also the weighed normalized matrix value.

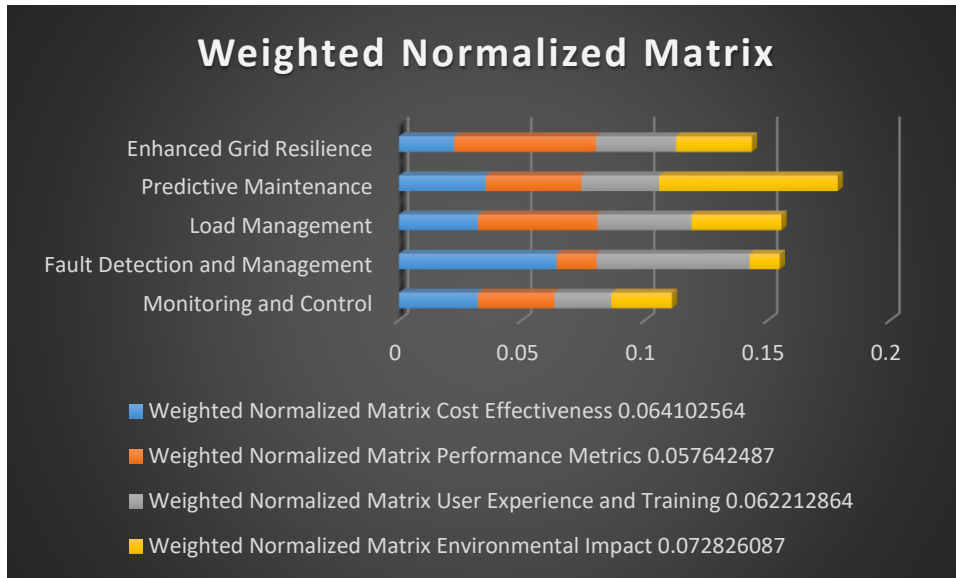


FIGURE 3. Weighted Normalized Matrix

Figure 3 shows the weighed normalized matrix for the shows the normalized matrix for Power System and its Automation for Analysis using ARAS Method. Monitoring and Control, Fault Detection and Management, Load Management, Predictive Maintenance and Enhanced Grid Resilience. Cost Effectiveness, Performance Metrics, User Experience and Training and Environmental Impact it is also the weighed normalized matrix value.

$$S_i = \sum(X_1 + Y_1 \dots Z_n) \quad (4)$$

$$K_i = \frac{X_{wnor1}}{\sum(X_{wnor1} + X_{wnor2} \dots X_{wnorn})} \quad (5)$$

TABLE 5. Final Result

	Si	Ki	Rank
	0.256784	1	
Monitoring and Control	0.110939	0.432034	5
Fault Detection and Management	0.154826	0.602942	3
Load Management	0.155505	0.605589	2
Predictive Maintenance	0.178528	0.695244	1
Enhanced Grid Resilience	0.143418	0.558515	4

Table 5 shows the final result and rank of the Power System and its Automation in Additive Ratio Assessment method. Monitoring and Control, Fault Detection and Management, Load Management, Predictive Maintenance and Enhanced Grid Resilience. Cost Effectiveness, Performance Metrics, User Experience and Training and Environmental Impact and it shows the SI , KI, Rank. SI values are derived by using the formula(4), And KI values.

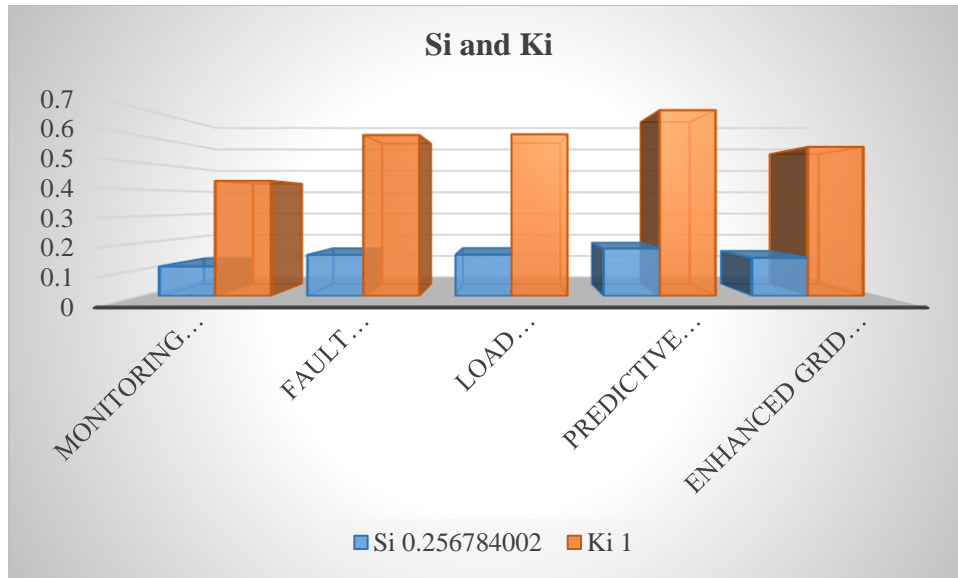


FIGURE 4. Si and Ki

Figure 4 shows the weighted normalized matrix in Power System and its Automation. Monitoring and Control, Fault Detection and Management, Load Management, Predictive Maintenance and Enhanced Grid Resilience. Cost Effectiveness, Performance Metrics, User Experience and Training and Environmental Impact. In SI method Predictive Maintenance is showing the highest value and Monitoring and Control is showing the lowest value for KI method Predictive Maintenance is showing the highest value and Monitoring and Control is showing the lowest value of weighted normalized data.

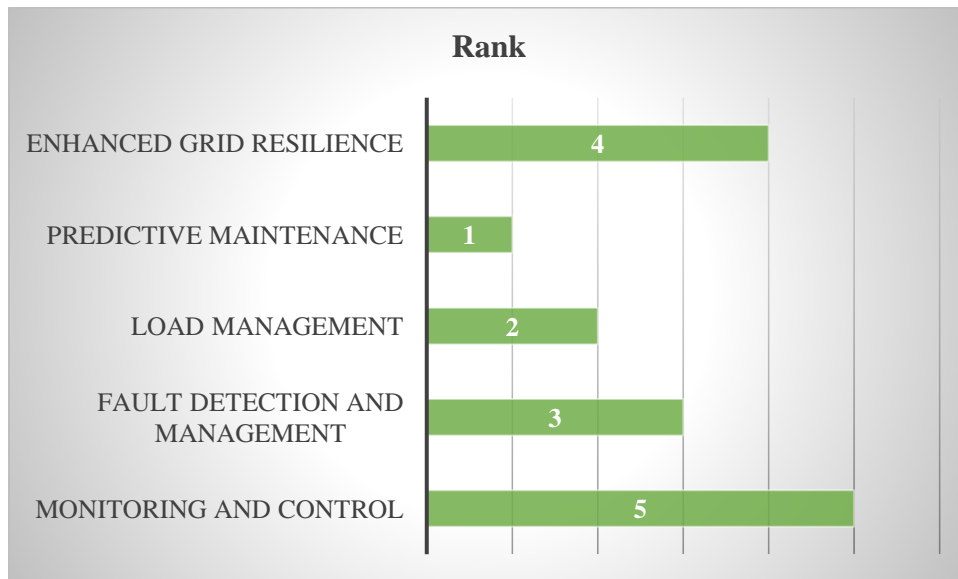


FIGURE 5. Shows the Rank

Figure 5 shows the Rank Power System and its Automation for Additive Ratio Assessment method. Predictive Maintenance is showing the highest rank and Monitoring and Control is showing the lowest rank.

4. CONCLUSION

Without substantial redundancy, the seamless operation of interconnected power systems would be impossible. Technology is advancing rapidly, and in the future, it's conceivable that all the mentioned devices could merge into one versatile unit capable of power system automation and handling any control function subcommittee tasks. Their geographical distribution enables the aggregation of power from diverse sources, facilitating efficient system performance monitoring. Additionally, they are pivotal in controlling and securing the power network while activating essential functions as needed. Computer and communication equipment, along with power plants, substations, Energy Control Centers, Corporate Headquarters, and Regional Operating Offices, are extensively deployed in significant load sites. These systems and devices are interconnected and intricate in nature. By harnessing cutting-edge research methodologies, we can unlock the full potential of coherence phasor data and develop innovative solutions to enhance the efficiency, reliability, and resilience of distribution networks. Following thorough research and multiple meetings, the International Electro Technical Commission (IEC) established the IEC TC 57 Substation Automation standard, known as IEC 61850. This standard revolutionizes the concept of automation in substations, facilitating the integration of various Intelligent Electronic Devices (IEDs). The evolution of the ARAS method can be outlined in three main aspects: examination of decision-making processes, assessment within various informational contexts, and integration with complementary methodologies. After its introduction, Fuzzy Sets Theory has significantly influenced real-world decision-making processes. Its application has led to enhanced problem-solving abilities, particularly in scenarios where conventional methods fall short. Notably, progress in this area has been evident, with a focus on employing triangular or trapezoidal shapes to represent fuzzy sets. This approach addresses uncertainties in decision-making and enriches the field by introducing new techniques for handling uncertainty. The primary challenge in physics lies in resolving the unknowns associated with these nodal values. This problem is tackled by converting it into a finite element problem. Linear algebra techniques are then employed to develop a system of equations that encapsulate the physics of the system.

REFERENCES

- [1]. Skendzic, Veselin, and Armando Guzma. "Enhancing power system automation through the use of real-time ethernet." In 2006 Power Systems Conference: Advanced Metering, Protection, Control, Communication, and Distributed Resources, pp. 480-495. IEEE, 2006.
- [2]. Bhuvaneswari, G., and G. Manikandan. "A smart speed governor device for vehicle using IoT." *Webology* 19, no. 2 (2022).
- [3]. Rani, Dr V. Vasudha, D. Vasavi, and K. Kumar. "Significance of multilayer perceptron model for early detection of diabetes over ml methods." *J. Univ. Shanghai Sci. Technol* 23, no. 08 (2021): 148-160.
- [4]. Zeynal, Hossein, Mostafa Eidiani, and Dariush Yazdanpanah. "Intelligent substation automation systems for robust operation of smart grids." 2014 IEEE Innovative Smart Grid Technologies-Asia (ISGT ASIA) (2014): 786-790.
- [5]. Salim, Rodrigo Hartstein, Karen Rezende Caino de Oliveira, André Darós Filomena, Mariana Resener, and Arturo Suman Bretas. "Hybrid fault diagnosis scheme implementation for power distribution systems automation." *IEEE Transactions on Power Delivery* 23, no. 4 (2008): 1846-1856.
- [6]. Manikandan, G., and S. Srinivasan. "Mining spatially co-located objects from vehicle moving data." *Eur. J. of Sci. Res* 68, no. 3 (2012).
- [7]. Mohan, VakaMurali, MalliKarjuna Reddy, and KRN Kiron Kumar. "A New Approach to Optical Networks Security: Attack-Aware Routing and Wavelength Assignment." In *IJCA Special Issues on "2nd National Conference-Computing, Communication and Sensor Network" CCSN*. 2011.
- [8]. Murthy, Ashwin Narasimha, Souptik Sen, and Ramesh Krishnamaneni. "Enhanced image retrieval and classification frameworks for brain disease diagnosis using hybrid deep learning models." *International Journal of Computer Science and Information Technology Research* 3, no. 1 (2022): 37-47.
- [9]. Mohagheghi, Salman, Mirrasoul Mousavi, J. Stoupis, and Z. Wang. "Modeling distribution automation system components using IEC 61850." In 2009 IEEE Power & Energy Society General Meeting, pp. 1-6. IEEE, 2009.
- [10]. Ten, Chee-Wooi, Manimaran Govindarasu, and Chen-Ching Liu. "Cybersecurity for electric power control and automation systems." In 2007 IEEE International Conference on Systems, Man and Cybernetics, pp. 29-34. IEEE, 2007.
- [11]. Shirmohammadi, Dariush, WH Edwin Liu, Ken C. Lau, and H. Wayne Hong. "Distribution automation system with real-time analysis tools." *IEEE Computer Applications in Power* 9, no. 2 (1996): 31-35.
- [12]. Kumar, Deepa S., J. S. Savier, and S. S. Biju. "Micro-synchrophasor based special protection scheme for distribution system automation in a smart city." *Protection and Control of Modern Power Systems* 5, no. 1 (2020): 1-14.
- [13]. Aftab, Mohd Asim, SM Suhail Hussain, Ikbal Ali, and Taha Selim Ustun. "IEC 61850 based substation automation system: A survey." *International Journal of Electrical Power & Energy Systems* 120 (2020): 106008.

- [14]. Greer, Richard, Will Allen, Jim Schnegg, and Andrew Dulmage. "Distribution automation systems with advanced features." In 2011 Rural Electric Power Conference, pp. C4-1. IEEE, 2011.
- [15]. Krishnamaneni, Ramesh, A. N. Murthy, and S. Sen. "A comparative study of big data mining algorithms for early detection of heart attack risk factors in electronic medical records." *International Journal of Computer Engineering and Technology (IJCET)* 10, no. 6 (2019): 139-154.
- [16]. Ramprasath, Muthukrishnan, M. Vijay Anand, and Shanmugasundaram Hariharan. "Image classification using convolutional neural networks." *International Journal of Pure and Applied Mathematics* 119, no. 17 (2018): 1307-1319.
- [17]. Bhuyan, Hemanta Kumar, Vinayakumar Ravi, Biswajit Brahma, and Nilayam Kumar Kamila. "Disease analysis using machine learning approaches in healthcare system." *Health and Technology* 12, no. 5 (2022): 987-1005.
- [18]. Ma, Youjie, Shaofeng Lv, Xuesong Zhou, and Zhiqiang Gao. "Review analysis of voltage stability in power system." In 2017 IEEE International Conference on Mechatronics and Automation (ICMA), pp. 7-12. IEEE, 2017.
- [19]. Ilyushin, Pavel V., and Andrew V. Pazderin. "Requirements for power stations islanding automation." In 2018 International Conference on Industrial Engineering, Applications and Manufacturing (ICIEAM), pp. 1-6. IEEE, 2018.
- [20]. Skjerve, Ann Britt Miberg, and Gyrð Skraaning Jr. "The quality of human-automation cooperation in human-system interface for nuclear power plants." *International journal of human-computer studies* 61, no. 5 (2004): 649-677.
- [21]. Li, Feng, Xinteng Yan, Yunyun Xie, Zi Sang, and Xiaoshu Yuan. "A review of cyber-attack methods in cyber-physical power system." In 2019 IEEE 8th International Conference on Advanced Power System Automation and Protection (APAP), pp. 1335-1339. IEEE, 2019.
- [22]. Bindra, Ashok, and Alan Mantooth. "Modern tool limitations in design automation: Advancing automation in design tools is gathering momentum." *IEEE Power Electronics Magazine* 6, no. 1 (2019): 28-33.
- [23]. Bouhouras, Aggelos S., Georgios T. Andreou, Dimitris P. Labridis, and Anastasios G. Bakirtzis. "Selective automation upgrade in distribution networks towards a smarter grid." *IEEE Transactions on Smart Grid* 1, no. 3 (2010): 278-285.
- [24]. Liu, Nana, and Zeshui Xu. "An overview of ARAS method: Theory development, application extension, and future challenge." *International Journal of Intelligent Systems* 36, no. 7 (2021): 3524-3565.
- [25]. Zavadskas, Edmundas Kazimieras, and Zenonas Turskis. "A new additive ratio assessment (ARAS) method in multicriteria decision-making." *Technological and economic development of economy* 16, no. 2 (2010): 159-172.
- [26]. Raj Mishra, A., G. Sisodia, K. Raj Pardasani, and K. Sharma. "Multi-criteria IT personnel selection on intuitionistic fuzzy information measures and ARAS methodology." *Iranian Journal of Fuzzy Systems* 17, no. 4 (2020): 55-68.
- [27]. Jovčić, Stefan, Vladimir Simić, Petr Průša, and Momčilo Dobrodolac. "Picture fuzzy ARAS method for freight distribution concept selection." *Symmetry* 12, no. 7 (2020): 1062.
- [28]. Christensen, Thomas J. "China, the US-Japan alliance, and the security dilemma in East Asia." *International Security* 23, no. 4 (1999): 49-80.
- [29]. Bhuvaneshwari, G., and G. Manikandan. "An intelligent intrusion detection system for secure wireless communication using IPSO and negative selection classifier." *Cluster Computing* 22, no. Suppl 5 (2019): 12429-12441.
- [30]. Kumar, KRN Kiran, and K. Bhavani. "Folded spined cube: new topology in interconnection networks." In 2022 6th International Conference on Computing Methodologies and Communication (ICCMC), pp. 314-319. IEEE, 2022.
- [31]. Chakraborty, R., S. Sen, M. Kurni, A. N. Murthy, and R. Krishnamaneni. "A Novel Framework for Enhancing Speech Pattern Recognition for Early Detection of Alzheimer's Disease Using machine learning Approach." *International Journal of Intelligent Systems and Applications in Engineering* 12 (2024): 421-428.
- [32]. Banerjee, Deepak, Vinay Kukreja, Shanmugasundaram Hariharan, and Vandana Sharma. "Precision agriculture: classifying banana leaf diseases with hybrid deep learning models." In 2023 IEEE 8th International Conference for Convergence in Technology (I2CT), pp. 1-5. IEEE, 2023.
- [33]. Bhuyan, Hemanta Kumar, and Chinmay Chakraborty. "Explainable machine learning for data extraction across computational social system." *IEEE transactions on computational social systems* 11, no. 3 (2022): 3131-3145.
- [34]. Haris, AA Ahamed, E. S. Vinothkumar, N. Nithya, Neelam Sharma, and B. Gayathri. "Exploring the Efforts of IAN-BGRU Justifications in Food Recommender System and its User Preferences." In 2023 International Conference on Self Sustainable Artificial Intelligence Systems (ICSSAS), pp. 847-852. IEEE, 2023.
- [35]. Schwartz, Lisa A., Jacob Kampen, and Banco Mundial. *Agricultural extension in east Africa*. Vol. 164. Washington, DC: World Bank, 1992.
- [36]. Dorfeshan, Yahya, Seyed Meysam Mousavi, Edmundas Kazimieras Zavadskas, and Jurgita Antucheviciene. "A new enhanced ARAS method for critical path selection of engineering projects with interval type-2 fuzzy sets." *International Journal of Information Technology & Decision Making* 20, no. 01 (2021): 37-65.
- [37]. Karagöz, Selman, Muhammet Devci, Vladimir Simic, and Nezir Aydin. "Interval type-2 Fuzzy ARAS method for recycling facility location problems." *Applied Soft Computing* 102 (2021): 107107.
- [38]. Paul, Debapriyo, P. Agarwal, and Shankar Chakraborty. "Performance appraisal of Indian state police forces using ARAS method." *Management Science Letters* 6, no. 5 (2016): 361-372.
- [39]. Banerjee, Deepak, Vinay Kukreja, Shanmugasundaram Hariharan, and Vandana Sharma. "Fast and accurate multi-classification of kiwi fruit disease in leaves using deep learning approach." In 2023 International Conference on Innovative Data Communication Technologies and Application (ICIDCA), pp. 131-137. IEEE, 2023.
- [40]. Bhuyan, Hemanta Kumar, Chinmay Chakraborty, Yogesh Shelke, and Subhendu Kumar Pani. "COVID-19 diagnosis system by deep learning approaches." *Expert Systems* 39, no. 3 (2022): e12776.

- [41].Peram, S. R. "Advanced Network Traffic Visualization and Anomaly Detection Using PCA-MDS Integration and Histogram Gradient Boosting Regression." *Journal of Artificial Intelligence and Machine Learning* 1, no. 3 (2023): 281.
- [42].Radović, Dunja, Željko Stević, Dragan Pamučar, Edmundas Kazimieras Zavadskas, Ibrahim Badi, Jurgita Antuchevičienė, and Zenonas Turskis. "Measuring performance in transportation companies in developing countries: a novel rough ARAS model." *Symmetry* 10, no. 10 (2018): 434.
- [43].Bursal, Ercan, Mustafa Abdullah Yılmaz, Ebubekir Izol, Fikret Türkan, Mehmet Nuri Atalar, Manikanta Murahari, Abdülmelik Aras, and Mushtaq Ahmad. "Enzyme inhibitory function and phytochemical profile of *Inula discoidea* using in vitro and in silico methods." *Biophysical Chemistry* 277 (2021): 106629.
- [44].Aras, Mohd Shahrieel Mohd, Shahrum Shah Abdullah, Azhan Ab Rahman, and Muhammad Azhar Abd Aziz. "Thruster modelling for underwater vehicle using system identification method." *International Journal of Advanced Robotic Systems* 10, no. 5 (2013): 252.
- [45].Karis, Mohd Safirin, Nur Rafiqah Abdul Razif, Nursabilillah Mohd Ali, M. Asyraf Rosli, Mohd Shahrieel Mohd Aras, and Mariam Md Ghazaly. "Local Binary Pattern (LBP) with application to variant object detection: A survey and method." In 2016 IEEE 12th international colloquium on signal processing & its applications (CSPA), pp. 221-226. IEEE, 2016.
- [46].Bharti, Rajendra Kumar, D. Suganthi, S. K. Abirami, Relangi Anil Kumar, B. Gayathri, and S. Kayathri. "Optimal extreme learning machine based traffic congestion control system in vehicular network." In 2022 6th International Conference on Electronics, Communication and Aerospace Technology, pp. 597-603. IEEE, 2022.
- [47].Kakulavaram, Sridhar. "Artificial Intelligence-Driven Frameworks for Enhanced Risk Management in Life Insurance." *Journal of Computational Analysis and Applications* 33, no. 8 (2024).
- [48].Kanumrapudi, P. K. "Improving Data Market Implementation Using Gray Relational Analysis in Decentralized Environments." *Journal of Artificial Intelligence and Machine Learning* 2, no. 1 (2024): 1-7.
- [49].Banerjee, Deepak, Vinay Kukreja, Shanmugasundaram Hariharan, and Vishal Jain. "Enhancing mango fruit disease severity assessment with cnn and svm-based classification." In 2023 IEEE 8th international conference for convergence in technology (I2CT), pp. 1-6. IEEE, 2023.
- [50].Bhuyan, Hemanta Kumar, Chinmay Chakraborty, Subhendu Kumar Pani, and Vinayakumar Ravi. "Feature and subfeature selection for classification using correlation coefficient and fuzzy model." *IEEE Transactions on Engineering Management* 70, no. 5 (2021): 1655-1669.
- [51].Aras, Faruk, Cüneyt Oysu, and Güneş Yılmaz. "An assessment of the methods for calculating ampacity of underground power cables." *Electric Power Components and Systems* 33, no. 12 (2005): 1385-1402.
- [52].Bhuvaneshwari, G., and G. Manikandan. "A novel machine learning framework for diagnosing the type 2 diabetics using temporal fuzzy ant miner decision tree classifier with temporal weighted genetic algorithm." *Computing* 100, no. 8 (2018): 759-772.
- [53].Keršulienė, Violeta, and Zenonas Turskis. "Integrated fuzzy multiple criteria decision-making model for architect selection." *Technological and economic development of economy* 17, no. 4 (2011): 645-666.
- [54].Prabhakara, T., V. Vidyasagar, and I. Naga. "Deep Long and Short Term Memory with Tunicate Swarm Algorithm for Skin Disease Detection and Classification." *J. Electrical Systems* 20, no. 7s (2024): 613-624.
- [55].Harika, Janmanchi, Palavadi Baleeshwar, Kummari Navya, and Hariharan Shanmugasundaram. "A review on artificial intelligence with deep human reasoning." In 2022 International Conference on Applied Artificial Intelligence and Computing (ICAAIC), pp. 81-84. IEEE, 2022.
- [56].Chakraborty, Chinmay, Kaushik Mishra, Santosh Kumar Majhi, and Hemanta Kumar Bhuyan. "Intelligent latency-aware tasks prioritization and offloading strategy in distributed fog-cloud of things." *IEEE Transactions on Industrial Informatics* 19, no. 2 (2022): 2099-2106.
- [57].Gayathri, B. "Green cloud computing." In IET Chennai 3rd International Conference on Sustainable Energy and Intelligent Systems (SEISCON 2012), pp. 114-118. Stevenage UK: IET, 2012.
- [58].Kakulavaram, Sridhar. "Life Insurance Customer Prediction and Sustainability Analysis Using Machine Learning Techniques." *International Journal of Intelligent Systems and Applications in Engineering* 10 (2022).
- [59].Praveen Kumar Kanumrapudi, "Enhancing Generative AI Shopping Assistants through Advanced Multi-Attribute Decision Making Technique." *Journal of Artificial Intelligence and Machine Learning*, 3(2), (2025): 1-7. DOI: 10.55124/jaim.v3i2.267.
- [60].Peram, S. R. "Automated Label Detection and Recommendation System Using Deep Convolution Neural Networks and SPSS-Based Evaluation." *International Journal of Computer Science and Data Engineering* 1, no. 2 (2024): 258.