



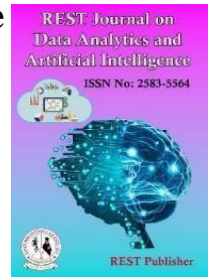
REST Journal on Data Analytics and Artificial Intelligence

Vol: 4(3), September 2025

REST Publisher; ISSN: 2583-5564

Website: <http://restpublisher.com/journals/jdaai/>

DOI: <https://doi.org/10.46632/jdaai/4/3/3>



Evaluating Multimedia Technologies an EDAS-Based Analysis of Quality, Accessibility, Cost, and Energy Efficiency

*Chandrasekar Raja, Devipriya Mani, M. Ramachandran, Nathiya Murali

Rest Labs, Kaveripattinam, Krishnagiri, Tamilnadu, India

*Corresponding Author Email: chandrasekarrajarsri@gmail.com

Abstract: Multimedia technology has transformed the way information is presented and consumed, revolutionizing communication, entertainment, education, and various industries. This paper explores the evolution of multimedia technology, its components, and the advancements that have shaped its current state. It delves into various aspects of multimedia, including graphics, audio, video, and interactive elements, discussing their role in creating immersive and engaging experiences. The paper also highlights the impact of multimedia on society and business, examining its applications in fields such as advertising, education, virtual reality, and gaming. Furthermore, it addresses the challenges and opportunities posed by the rapid evolution of multimedia technology, including issues related to content creation, distribution, and copyright. By analyzing the trajectory of multimedia technology, this paper offers insights into its potential future developments and the implications they might have on our digital landscape. Multimedia technology has revolutionized communication by enabling the creation of engaging and interactive content. Research in this field helps uncover innovative ways to convey information effectively, fostering better communication in diverse contexts, from advertising and journalism to social media and online collaboration. The integration of multimedia elements in education enhances the learning experience. Research in this area explores how multimedia can be used to create dynamic and immersive educational content, catering to different learning styles and making complex concepts more understandable. This research enables us to fully grasp the potential of multimedia and leverage it for positive societal, economic, and technological advancements. The EDAS score primarily based on the space from the suggest agreement machine is the installed energy for a manufacturing plant. Experts' critiques and derived numbers do not trust each different concerning solar energy and geothermal electricity. Alternative taken as Technology A, Technology B, Technology C, Technology D, Technology Evaluation parameters taken as improved quality, Increased Accessibility, cost, Energy consumption kwh. Technology A is ranked at first position and Technology D is ranked at fifth position

Keywords: Multimedia cloud, Big data, Social media, Twitter, micro blogging, topic modeling.

1. INTRODUCTION

A multimodal approach to analyzing big social and news media data involves incorporating and integrating multiple types of data, such as text, images, videos, audio, and other forms of media, to gain deeper insights and a more comprehensive understanding of the content and trends within large datasets. This approach acknowledges that information is conveyed through various modalities, and analyzing them together can provide a richer context and more accurate representation of the data. Data Collection: Gather data from various sources, including social media platforms (like Twitter, Face book, Instagram), news websites, video-sharing platforms (such as YouTube), and other relevant sources. Collect both textual content and associated multimedia (images, videos, audio clips). Data Preprocessing: Process and clean the collected data. For text, this involves tasks like tokenization, stemming, and sentiment analysis. For images and videos, preprocessing may include resizing, feature extraction (such as color histograms or deep learning-based features), and object detection. Integration of Modalities: Combine data from different modalities into a unified dataset. This might involve linking textual information to related images or videos through metadata, timestamps, or other relevant attributes. Feature Extraction: Extract meaningful features from each modality. For text, this could involve extracting keywords, topics, or sentiment scores. For images and videos, features could include color distributions, object recognition

results, or facial expressions [1] The term "Digital Media, Technologies, and Scholarship: Some Shapes of eResearch in Educational Inquiry" appears to refer to a topic or concept related to the intersection of digital media, technology, and scholarly research within the context of educational inquiry. This phrase suggests that there are various forms or manifestations (referred to as "shapes") of eResearch, which is a term used to describe research that utilizes digital tools, technologies, and methods in the process of investigation and knowledge creation. Digital Media: This refers to various forms of electronic content and communication, including text, images, videos, audio recordings, and interactive media. Digital media plays a crucial role in modern educational settings, as it can facilitate new modes of learning, communication, and knowledge dissemination. Technologies: This encompasses the various tools, devices, and platforms that are employed to facilitate research and educational activities. Technologies could include hardware such as computers, tablets, and smartphones, as well as software applications and online platforms designed to support learning and research [2] In the age of the rapidly advancing social media revolution, various computer-mediated tools are employed for online communication. These advancements function as channels for user engagement, content creation, sharing of information, real-time event dissemination, and both personal and public message interchange through virtual communities and networks. Diverse social media technologies are available, encompassing forms such as blogs, business networks (like e-commerce platforms), corporate social networks, forums for general question and answer interactions, micro blogs, platforms for sharing photos and reviewing products, social bookmarking, social networking sites, social gaming, and virtual reality environments. These novel solutions are extensively utilized to enable interaction among numerous social collectives worldwide [3]. Contemporary advancements in instruction-level parallelism (ILP) compiler technology have significantly increased the capability of compilers to exploit opportunities for parallel execution in various programs. Key innovations, previously confined to research labs, are now making their way into practical use, including techniques like trace scheduling, superblock scheduling, hyperblock scheduling, and software pipelining. The current level of expertise has proven highly effective across a diverse array of applications, with substantial potential for further progress in this domain. MediaBench was initially established with the goal of accurately representing the challenges involved in developing multimedia and communications systems. This initiative is particularly focused on accommodating the evolving trends in chip architectures and software development, emphasizing the creation of portable programs written in high-level languages. Moreover, it seeks to differentiate itself from other solutions, such as the integer SPEC benchmark, by clearly articulating its unique advantages. An additional aim of MediaBench is to develop a tool that serves the dual purpose of facilitating system synthesis and evaluation. For tasks such as classification, prediction, and other objectives in data mining, the majority of existing systems that extract information from patient records rely on organized records containing numerical and/or categorical values as their foundational format. In order to fully harness the benefits of analyzing multimedia patient records, it is essential to combine alternative data mining and knowledge discovery techniques with the notable advancements in processing, identifying patterns, and interpreting medical images, text, and signals. This integration, when applied to comprehensive datasets encompassing patient history and current condition descriptions, holds the potential to significantly enhance the outcomes of mining medical records. Careful and systematic selection of appropriate procedures is crucial to achieving these objectives, particularly during the initial data preparation phase. This chapter underscores the importance of preprocessing and feature extraction stages, especially when dealing with extensive collections of multimedia patient records. To illustrate, specific methods and instances are presented to showcase how rule-based approaches can be employed during the preprocessing phase of a data mining procedure [5]. Even though there hasn't been extensive research on analyzing content from Twitter, this platform has the potential to provide valuable insights as a novel form of social media. It remains uncertain whether Twitter simply serves as a faster news source, covering mostly the same subjects as traditional news outlets. To address this, we employ unsupervised topic modeling to compare the content of Twitter with that of a conventional news outlet like the New York Times. We use a Twitter-LDA model to extract themes from a representative Twitter sample. Then, we leverage text mining tools to match these Twitter topics with the themes found in the New York Times. Additionally, we explore the connections between topic categories and types and the proportions of tweets expressing opinions or retweets. The outcomes of our comparisons yield intriguing and practical findings, applicable in downstream information retrieval or data mining scenarios [6]. Social media platforms offer businesses the ability to instantly assess public sentiment regarding various situations and the corresponding actions. The initial step in the sentiment analysis process involves preprocessing the data extracted from social media. Presently, numerous analyses are focused on managing social media by identifying emerging trends related to sentiment. The objective is to offer comprehensive Twitter insights across diverse subjects, specifically tailored for the extensive social networking sites where Twitter data continuously escalates at a remarkable pace. This influx of data is considered a form of Big Data. Subsequently, data collected from social networks via Apache Flume and stored in Hadoop storage can be subjected to processing using a Big Data approach such as Infosphere BigVision. Furthermore, the concept involves employing substantial datasets to consolidate individuals' interpretations of these assessment findings. According to assessments based on these investigations, the utilization of a Big Data platform yields

superior outcomes in the assessment of social media [7]. A significant technological leap forward, multimedia computing has now expanded to encompass a range of services such as viewing, generating, modifying, processing, and searching multimedia content. These services demand substantial computational power, bandwidth, and storage resources. As a consequence, over the last decade, there has been a notable surge in the adoption and popularity of multimedia cloud computing. While cloud computing brings about convenience, it also carries financial implications. The pay-as-you-go pricing model intrinsic to cloud computing plays a crucial role in alleviating financial concerns for providers of multimedia services. Nonetheless, this pricing structure has also attracted competitors who hinder the migration of services and data to the cloud by various enterprises. This paper introduces an innovative approach to identify and counteract FRC attacks on cloud-based services through network flow analysis from the victim's perspective. To assess the effectiveness of this proposed strategy, real-world benchmark datasets were utilized in experimental settings. The results obtained from these experiments underscore that our suggested approach is proficient in accurately detecting and mitigating FRC attacks, while incurring minimal overhead. [Reference: 8] Social media has revolutionized the way information is shared, thanks to advancements in Web 2.0, pervasive computing, and related technologies. It enables people to contribute, spread, and exchange information without relying on centralized authorities, empowering the public to generate content. Weibo, for instance, serves as a real-time monitor for urban emergencies like fires, explosions, and traffic jams. Users of Weibo essentially act as social sensors, with the platform itself functioning as a sensor platform. This study emphasizes the process of narrating urban emergency events and introduces a novel method. By analyzing Weibo posts related to such events, this approach aims to efficiently extract multi-modal data (including images, videos, and text) to succinctly and accurately tell the event's story. The crux of this paper is proposing an innovative technique for presenting urban emergency events by utilizing Weibo to create multi-modal summaries. This strategy unfolds in three stages: filtering irrelevant Weibo posts, extracting multi-modal data, and constructing cohesive narratives. The efficacy of this approach is demonstrated through detailed case studies using real microblog datasets. [Reference: 9] In various applications related to Earth observation (EO), such as monitoring the environment, precision agriculture, managing resources, studying urban areas, and responding to disasters and emergencies, remote sensing plays a crucial role. However, there are situations where the data obtained through remote sensing cannot be fully utilized due to limitations in the spectral, spatial, and temporal resolutions of EO sensors. This limitation is especially prominent in scenarios requiring rapid or real-time responses, like emergency situations. Fortunately, there is a recent opportunity to complement and overcome these limitations in remote sensing data by harnessing the power of social media data, thanks to the rapid evolution and accessibility of such data sources. This study provides a comprehensive overview of how social media and remote sensing contribute to time-sensitive applications. The article initially explores the latest advancements in combining social media and remote sensing data. Subsequently, it delves into a variety of real-world instances and scenarios where social media data has been effectively employed to enhance remote sensing information and improve methods for emergency response. [Reference: 10] In addition to conventional television services, multimedia on demand (MOD) represents an interactive system that provides various value-added features. These include video on demand and interactive online learning. This presents a new challenge for the telecommunications industry: retaining crucial MOD customers in a competitive market. Within the realm of mobile communications, data mining techniques have been extensively employed to develop predictive models for customer churn. However, existing research tends to focus on creating these prediction models, often overlooking the crucial pre-processing stage of data mining. This stage involves refining the data by eliminating inaccuracies or irrelevant information. This study outlines the fundamental steps involved in constructing data mining-based customer churn prediction models for MOD services. It introduces four evaluation metrics - prediction accuracy, precision, recall, and F-measure - which collectively assess model performance. Interestingly, not all of these metrics have been consistently used to evaluate such models. The experimental findings reveal that integrating association rules significantly enhances the predictive capabilities of both DT and NN models, particularly across a designated validation dataset. The data used for this study originates from a telecommunications provider offering MOD services in Taiwan. Notably, the DT model outperforms the NN model in this context. Furthermore, for the purposes of marketing and management, the study presents insightful and meaningful rules derived from the DT model [11]. The reasons behind a significant portion of customer attrition are illustrated by these factors. Over the last two decades, advances in technology have led to an influx of data from diverse sources, such as supply chain systems, user-generated content, the Internet, financial institutions, healthcare, and scientific sensors. The term "big data" was coined to describe this emerging trend. In addition to its sheer volume, big data distinguishes itself from regular data in several important ways. It often lacks structure and requires more immediate processing. Consequently, the advancement has necessitated new system architectures for data collection, transmission, storage, and large-scale processing. This article presents a combination of a literature review and a system tutorial focused on big data analytics platforms. The primary aim is to provide a comprehensive overview for non-experts while also encouraging advanced readers to develop their own big data solutions from the ground up. The initial sections define big data and elaborate on its challenges. The subsequent part outlines a systematic approach to dividing

big data systems into four distinct modules: data generation, data acquisition, data storage, and data analytics. These components collectively form a big data value chain. The paper then offers an extensive survey of various strategies and methodologies from both scientific and business realms. Additionally, the widely utilized Hadoop framework for addressing big data challenges is discussed. The article concludes by summarizing various assessment criteria and suggesting potential future directions for research in large-scale data systems [12]. To gain valuable information from the analysis of vast datasets, contemporary intelligent urban centers depend on extensive Internet of Things (IoT) technologies. Although recent assessments have been conducted in this field, there exists a noticeable deficiency that pertains to four key dimensions of the problem. These dimensions encompass the utilization of integrated technologies, computational algorithms, data repositories, and visual surveillance within intelligent urban environments. This article introduces the concept of edge vision computing and explores the latest sets of data, methodologies, and advancements within integrated systems. Furthermore, forthcoming patterns and challenges are also examined [13]. Through social media sentiment analysis, deep learning is thought to benefit smart cities. Numerous smart city applications (SCAs) can be made use of the digital content found in social media. It is difficult to parallelize traditional convolutional neural networks (CNNs) and they are insufficient to collect long-term contextual semantic data for sentiment analysis. In this light, this article first suggests a domain-specific distributed word representation (DS-DWR)² using a relatively modest corpus size derived from social media text resources. Different Distributed Word Representations are combined in the DS-DWR algorithm to provide rich representations of the input sequence, which is beneficial for uncommon and unknown phrases. The second is a dilated convolutional neural network (D-CNN)³, which consists of a global average pooling (GAP)⁵ layer and three parallel PD-CNN (dilated convolutional neural network)⁴ layers. Without sacrificing local information, our carefully researched parallel dilated convolution reduces dimension and incorporates an increase in the size of receptive fields. Furthermore, the utilisation of various dilation rates results in the long-term contextual semantic information. Using various hyperparameters tuned for higher parallelism, experiments show that our design achieves equivalent outcomes with the lowest possible computational cost [14].

2. MATERIALS AND METHOD

2.1 Technology: Technology refers to the application of scientific knowledge, tools, and techniques to create solutions, improve processes, and achieve various goals in areas such as industry, communication, medicine, and more. It encompasses a wide range of tools, machines, systems, and methods that aid in the advancement of society and the accomplishment of tasks.

2.2 Improved Quality: Enhanced quality refers to a state of improvement or advancement in the overall standard, excellence, or value of something. It signifies a notable positive change that leads to a higher level of performance, effectiveness, or satisfaction. This can involve refining processes, increasing precision, optimizing functionality, and ensuring a better experience or outcome compared to previous states.

2.3 Increased Accessibility: Enhanced accessibility refers to an improved state where something becomes more available, approachable, or usable for a wider range of individuals, particularly those with diverse needs and circumstances. This can involve making information, services, technologies, or physical spaces more accommodating and inclusive to ensure that everyone, regardless of their abilities or limitations, can engage and participate effectively.

2.4 Cost: It represents the expenses or sacrifices involved in achieving a particular goal or obtaining a certain item or service. Cost can encompass various factors, such as direct expenses, indirect expenses, opportunity costs, and any trade-offs that need to be considered when making decisions related to spending or investment.

2.5 Energy Consumption kwh: The term "Energy Consumption kWh" stands for the amount of energy used or consumed, measured in kilowatt-hours (kWh). It indicates the quantity of electrical energy utilized by a device, system, or household over a specific period of time. This measurement helps assess and track the usage of electricity for various purposes, such as appliances, lighting, electronics, and more.

Method: The "grey system concept" offers a method for effectively evaluating systems that possess uncertain or unclear characteristics. As per this notion, a "black scheme" aims to encompass uncertain knowledge, while a "white design" intends to encompass openly accessible information. A "grey system" refers to one with minimal distinct details. Key elements of the grey systems technique encompass "grey relational analysis (GRA), grey decision, grey programming, and grey control." GRA, a facet of the grey systems approach, aids in resolving issues involving intricate interconnections among diverse elements and quantities.[16] Hence, the Generalized Regression Analysis (GRA) method has been extensively utilized to tackle uncertainties stemming from fragmented data and incomplete information. Furthermore, the GRA methodology is among the most commonly applied approaches for exploring various connections among distinct sets of discrete data and for drawing inferences in scenarios involving multiple attributes. The key advantages of employing the GRA technique include its effectiveness in decision-making within a corporate framework, its straightforward computational

procedures, and its reliance on the original data for drawing conclusions [17]. The widespread application of Deng's (1982) grey systems approach can be observed across various fields. This approach has demonstrated its effectiveness in managing information that is inaccurate, insufficient, or ambiguous. The grey systems technique, which is adept at addressing complex relationships among multiple elements, encompasses a branch known as grey relational analysis (GRA) [18]. GRA has proven to be successful in tackling a range of multiple attribute decision-making (MADM) challenges. For instance, it has been employed in scenarios such as making hiring decisions (Olson & Wu, 2006), devising restoration plans for power distribution systems (Chen, 2005), evaluating integrated circuit marking processes (Jiang, Tasi, & Wang, 2002), constructing models for quality function deployment (Wu, 2002), and detecting defects in silicon wafer slicing (Lin et al., 2006) [19]. The Grey Relational Analysis (GRA) technique can be employed to address Multiple Attribute Decision Making (MADM) challenges by consolidating the different measures of achievement similarity for each option into a unified value. Consequently, the original complex problem is simplified into a single-property judgment problem. This enables the analysis of solutions with diverse attributes using the GRA method [20]. Moreover, by converting the behavior of each option into the initial step of GRA, a comparison sequence is generated. This step is known as "grey relational generating." These sequences form the basis for establishing an "ideal target sequence" as a standard reference. Ultimately, the "grey relational correlation between various similarity variations and the reference pattern" is determined [21]. The "grey relational coefficients" are subsequently applied to generate the "grey relational grade" for each comparable pattern when compared to the benchmark pattern. The optimal version is determined by identifying the variant that possesses "the greatest grey relational grade within the reference sequence and when compared to itself" [22] within its transformed analogous sequence.

3. RESULTS AND DISCUSSION

TABLE 1. Multimedia Technology and Advancements

	Improved Quality	Increased Accessibility	Cost	Energy Consumption kwh
Technology A	8	6	500,000	1200
Technology B	9	7	700,000	1500
Technology C	7	8	600,000	1300
Technology D	6	9	800,000	1700
Technology E	9	5	550,000	1400

Table 1 shows Based on the given ratings, Technologies B and E have the highest improved quality scores, both receiving a rating of 9. Technology A follows closely with a rating of 8. Technology D is rated highest for increased accessibility, receiving a rating of 9. Technology C also has a high rating of 8. On the other hand, Technology E has the lowest rating of 5. Technology A has the lowest cost at \$500,000, while Technology D has the highest cost at \$800,000. Technology D consumes the most energy at 1700 kWh, followed by Technology B at 1500 kWh. Technology A consumes the least energy at 1200 kWh.

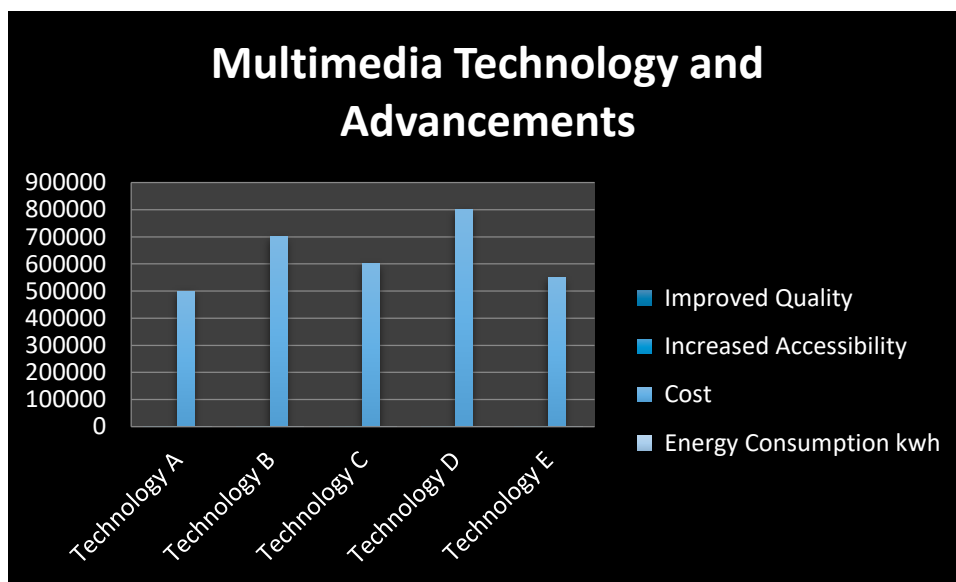


FIGURE 1. Multimedia Technology and advancements

In the Figure 1 shows Based on the given ratings, Technologies B and E have the highest improved quality scores, both receiving a rating of 9. Technology A follows closely with a rating of 8. Technology D is rated highest for increased accessibility, receiving a rating of 9. Technology C also has a high rating of 8. On the other hand, Technology E has the lowest rating of 5. Technology A has the lowest cost at \$500,000, while Technology D has the highest cost at \$800,000. Technology D consumes the most energy at 1700 kWh, followed by Technology B at 1500 kWh. Technology A consumes the least energy at 1200 kWh.

TABLE 2. Normalized data

Improved Quality	Increased Accessibility	Cost	Energy Consumption kwh
0.6667	0.2500	1.0000	1.0000
1.0000	0.5000	0.3333	0.4000
0.3333	0.7500	0.6667	0.8000
0.0000	1.0000	0.0000	0.0000
1.0000	0.0000	0.8333	0.6000

In the table 2 shows the variation values of improved quality, Increased Accessibility, cost, Energy consumption kwh.

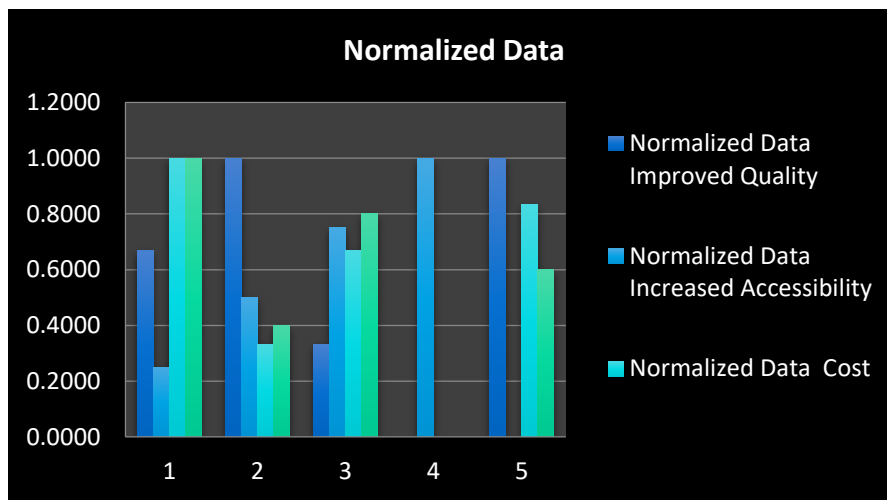


FIGURE 2. Normalized data

In figure 2 shows the normalized data of improved quality, Increased Accessibility, cost, Energy consumption kwh

TABLE 3. Deviation Sequence

Improved Quality	Increased Accessibility	Cost	Energy Consumption kwh
0.3333	0.7500	0.0000	0.0000
0.0000	0.5000	0.6667	0.6000
0.6667	0.2500	0.3333	0.2000
1.0000	0.0000	1.0000	1.0000
0.0000	1.0000	0.1667	0.4000

Table 3 shows deviation sequence of improved quality, Increased Accessibility, cost, Energy consumption kwh

TABLE .4 Grey relation coefficient

Improved Quality	Increased Accessibility	Cost	Energy Consumption kwh
0.6000	0.4000	1.0000	1.0000
1.0000	0.5000	0.4286	0.4545
0.4286	0.6667	0.6000	0.7143
0.3333	1.0000	0.3333	0.3333
1.0000	0.3333	0.7500	0.5556

In this Table 4 shows Grey relation coefficient of improved quality, increased Accessibility, cost, Energy consumption kwh

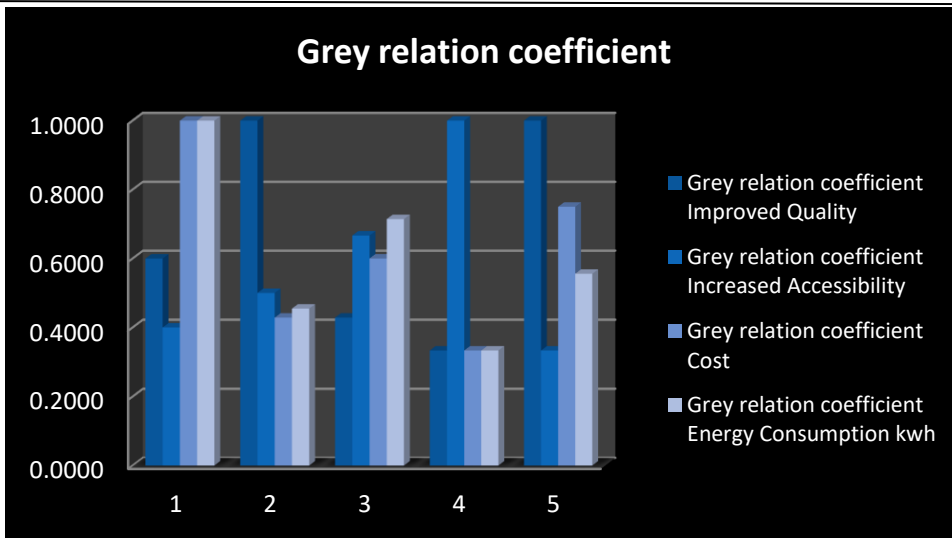


FIGURE 3. Grey relation coefficient

In this figure 3 shows Grey relation coefficient of improved quality, increased Accessibility, cost, Energy consumption kwh

TABLE 4. G R G

	GRG
Technology A	0.7500
Technology B	0.5958
Technology C	0.6024
Technology D	0.5000
Technology E	0.6597

In the above table 4 shows GRG Technology A has high and Technology D has low, Technology B has 0.5958, Technology C has 0.6024 and Technology E has 0.6597

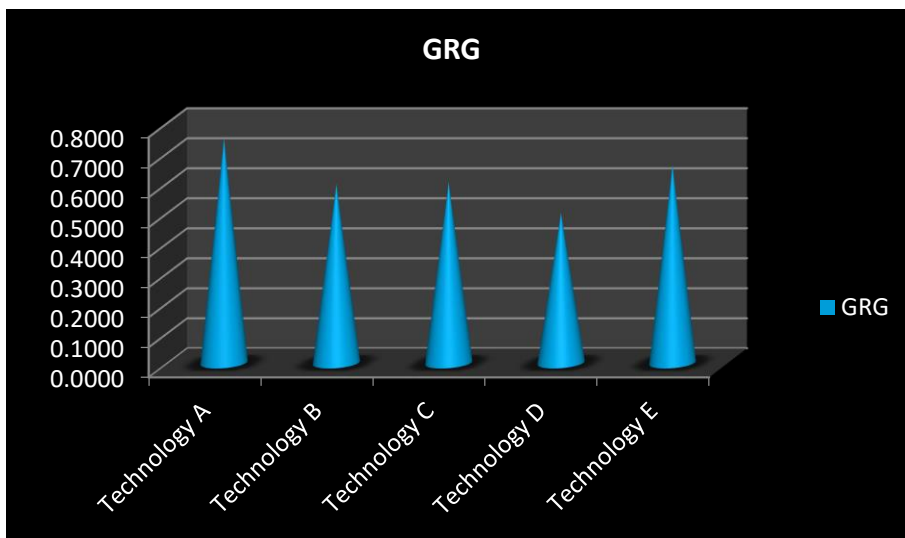


FIGURE.4 G R G

In the above table 4 shows GRG Technology A has high and Technology D has low

TABLE 5. Rank

	Rank
Technology A	1
Technology B	4
Technology C	3
Technology D	5
Technology E	2

In this table 5 Technology A is ranked at first position and Technology D is ranked at fifth position

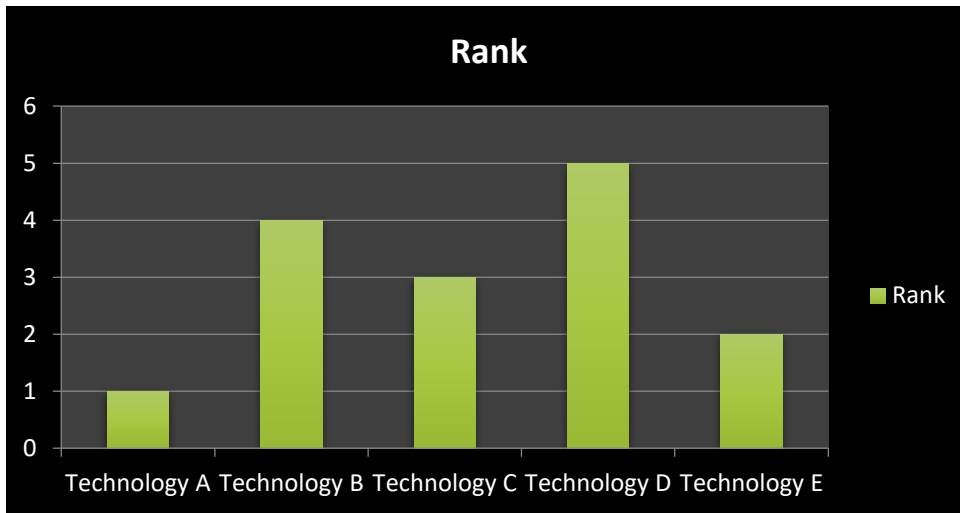


FIGURE 5. Rank

In this figure 5 Technology A is ranked at first position and Technology D is ranked at fifth position

4. CONCLUSION

In conclusion, multimedia technology has undergone remarkable advancements that have revolutionized the way we communicate, learn, and entertain. The journey from simple text and static images to the dynamic and interactive multimedia experiences we enjoy today has been characterized by continuous innovation and rapid evolution. Several key points can be drawn as a conclusion to the topic of multimedia technology and its advancements: **Enhanced Communication:** Multimedia technology has significantly enhanced communication by allowing us to convey complex ideas, emotions, and information through a combination of text, images, audio, and video. This has led to more engaging and effective modes of communication in various fields, from education to business and entertainment. **Interactive Learning:** The integration of multimedia elements in education has transformed the learning experience. Interactive simulations, videos, animations, and virtual reality have made learning more engaging, accessible, and effective. Students can now grasp difficult concepts more easily, thanks to the visual and interactive aids provided by multimedia. **Entertainment Evolution:** The entertainment industry has been profoundly impacted by multimedia technology. From high-definition videos to immersive virtual reality experiences, multimedia has redefined how we consume entertainment. Augmented reality games, virtual concerts, and interactive storytelling have expanded the possibilities for entertainment, blurring the lines between the virtual and real worlds. **Digital Marketing:** Multimedia technology has revolutionized digital marketing strategies. With the rise of social media platforms, businesses can create visually appealing and engaging content to reach their target audiences more effectively. Video marketing, live streaming, and interactive advertisements have become integral to successful digital marketing campaigns. **Challenges and Considerations:** Alongside the advancements, there are challenges that need to be addressed. Issues like copyright infringement, privacy concerns, and the potential for misinformation have arisen due to the ease of creating and disseminating multimedia content. Balancing innovation with ethical and legal considerations remains a critical aspect of multimedia technology development. **Future Directions:** The future of multimedia technology holds even more exciting possibilities. Advances in artificial intelligence, machine learning, and data analytics will likely lead to more personalized and interactive multimedia experiences. Virtual and augmented reality will continue to evolve, potentially transforming industries beyond entertainment, such as healthcare, architecture, and remote collaboration. **Global Connectivity:** Multimedia technology has played a significant role in connecting people across the globe. Social media, video conferencing, and content sharing platforms have bridged geographical gaps, enabling real-time communication and collaboration regardless of physical distance.

REFERENCES

- [1]. O'Halloran, Kay L., Gautam Pal, and Minhao Jin. "Multimodal approach to analysing big social and news media data." *Discourse, Context & Media* 40 (2021): 100467.

- [2]. Robinson Joel, M., G. Manikandan, G. Bhuvanewari, and P. Shanthakumar. "SVM-RFE enabled feature selection with DMN based centroid update model for incremental data clustering using COVID-19." *Computer Methods in Biomechanics and Biomedical Engineering* 27, no. 10 (2024): 1224-1238.
- [3]. Markauskaite, Lina. "Digital media, technologies and scholarship: Some shapes of eResearch in educational inquiry." *The Australian Educational Researcher* 37, no. 4 (2010): 79-101.
- [4]. Nayeemuddin, "Optimizing Supply Chain in the Indian Market through Risk Analysis: A Path to Enhanced Efficiency and Resilience", *International Journal of Emerging Technologies and Innovative Research*, 10(10), 2023, ppc60-c67.
- [5]. Anandhan, Anitha, Liyana Shuib, Maizatul Akmar Ismail, and Ghulam Mujtaba. "Social media recommender systems: review and open research issues." *IEEE Access* 6 (2018): 15608-15628.
- [6]. Lee, Chunho, Miodrag Potkonjak, and William H. Mangione-Smith. "Mediabench: A tool for evaluating and synthesizing multimedia and communications systems." In *Proceedings of 30th Annual International Symposium on Microarchitecture*, pp. 330-335. IEEE, 1997.
- [7]. Annapurna, D., K. B. Raja, K. R. Venugopal, and L. M. Patnaik. "Analysis of On Demand and Table Driven Routing Protocol for Fire Fighter Application."
- [8]. Neha Bharani, "An Extensive Analysis of Current Software Defined Network Optimization Techniques", *Computer Science, Engineering and Technology*, 2(4), December 2024, 1-7.
- [9]. Elmaghraby, Adel S., Mehmed M. Kantardzic, and Mark P. Wachowiak. "Data mining from multimedia patient records." *Data Mining and Knowledge Discovery Approaches Based on Rule Induction Techniques* (2006): 551-595.
- [10]. Zhao, Wayne Xin, Jing Jiang, Jianshu Weng, Jing He, Ee-Peng Lim, Hongfei Yan, and Xiaoming Li. "Comparing twitter and traditional media using topic models." In *Advances in Information Retrieval: 33rd European Conference on IR Research, ECIR 2011, Dublin, Ireland, April 18-21, 2011. Proceedings* 33, pp. 338-349. Springer Berlin Heidelberg, 2011.
- [11]. Madhavi, Konduru Reddy, Kommanaboyina Lakshmi Sundara Soujanya, Rambabu Inaganti, Kondru Ayyappa Swamy, Sreekanth Yalavarthi, and Madhu Munagala. "Brain Tumor Classification and Segmentation Using Transfer Learning from MRI Images." *International Journal of Computer Information Systems and Industrial Management Applications* 17 (2025): 14-14.
- [12]. Balaanand, Muthu, N. Karthikeyan, and S. Karthik. "Envisioning social media information for big data using big vision schemes in wireless environment." *Wireless Personal Communications* 109, no. 2 (2019): 777-796
- [13]. Bhushan, Kriti, and Brij B. Gupta. "Network flow analysis for detection and mitigation of Fraudulent Resource Consumption (FRC) attacks in multimedia cloud computing." *Multimedia Tools and Applications* 78 (2019): 4267-4298.
- [14]. Xu, Zheng, Yunhuai Liu, Hui Zhang, Xiangfeng Luo, Lin Mei, and Chuanping Hu. "Building the multi-modal storytelling of urban emergency events based on crowdsensing of social media analytics." *Mobile Networks and Applications* 22 (2017): 218-227.
- [15]. Li, Jun, Zhi He, Javier Plaza, Shutao Li, Jinfen Chen, Henglin Wu, Yandong Wang, and Yu Liu. "Social media: New perspectives to improve remote sensing for emergency response." *Proceedings of the IEEE* 105, no. 10 (2017): 1900-1912.
- [16]. Bharani, Neha, and Abhay Kothari. "Tools for analysis of various static software complexities for mat lab code." *Turkish Online Journal of Qualitative Inquiry* 12, no. 6 (2021).
- [17]. Tsai, Chih-Fong, and Mao-Yuan Chen. "Variable selection by association rules for customer churn prediction of multimedia on demand." *Expert Systems with Applications* 37, no. 3 (2010): 2006-2015.
- [18]. Hu, Han, Yonggang Wen, Tat-Seng Chua, and Xuelong Li. "Toward scalable systems for big data analytics: A technology tutorial." *IEEE access* 2 (2014): 652-687.
- [19]. Ezzat, Mostafa Ahmed, Mohamed A. Abd El Ghany, Sultan Almotairi, and Mohammed A-M. Salem. "Horizontal review on video surveillance for smart cities: Edge devices, applications, datasets, and future trends." *Sensors* 21, no. 9 (2021): 3222.
- [20]. Alam, Muhammad, Fazeel Abid, Cong Guangpei, and L. V. Yunrong. "Social media sentiment analysis through parallel dilated convolutional neural network for smart city applications." *Computer Communications* 154 (2020): 129-137.
- [21]. Inaganti, Rambabu, and Sreekanth Yalavarthi. "Securing Healthcare Innovations: Cybersecurity Frameworks for FDA-Regulated Medical Devices in the Age of AI." In *AI-Driven Healthcare Cybersecurity and Privacy*, pp. 343-364. IGI Global Scientific Publishing, 2025.
- [22]. Suhasini, S., J. M. SheelaLavanya, M. Parameswari, G. Manikandan, and S. Gracia Nissi. "Input Based Resource Allocation in Motion Estimation using Re-configurable Architecture." In *2021 Fifth International Conference on I-SMAC (IoT in Social, Mobile, Analytics and Cloud)(I-SMAC)*, pp. 1091-1095. IEEE, 2021.
- [23]. Jyothi, P., and G. Pradeepini. "Review on cardiac arrhythmia through segmentation approaches in deep learning." In *International Conference on Intelligent and Smart Computing in Data Analytics: ISCDA 2020*, pp. 139-147. Singapore: Springer Singapore, 2021.
- [24]. Varma, P. Bharat Siva, Prathap Adimoolam, Yamini Lahari Marna, Anantharamaiah Vengala, VS Divya Sundar, and MVT Ram Pavan Kumar. "Enhancing robust object detection in weather-impacted environments using deep

- learning techniques." In 2024 2nd International Conference on Self Sustainable Artificial Intelligence Systems (ICSSAS), pp. 599-604. IEEE, 2024.
- [25]. Aydemir, Erdal, and Yusuf Sahin. "Evaluation of healthcare service quality factors using grey relational analysis in a dialysis centre." *Grey Systems: Theory and Application* (2019). DOI: <https://doi.org/10.1108/GS-01-2019-0001>
- [26]. Nayeemuddin, Mr, and Mr Abdul Nazeer. "To study the effect of low velocity impacts on composite material buy using Finite element analysis software LSDYNA." *Iosr Journal Of Mechanical And Civil Engineering (Iosr-Jmce)* E-Issn: 2278-1684.
- [27]. Kose, Erkan, Danişment Vural, and Gulcin Canbulut. "The most livable city selection in Turkey with the grey relational analysis." *Grey Systems: Theory and Application* 10, no. 4 (2020): 529-544. DOI: <https://doi.org/10.1108/GS-04-2020-0042>
- [28]. Wan, Shiuan, and Shih-Hsun Chang. "Crop classification with WorldView-2 imagery using Support Vector Machine comparing texture analysis approaches and grey relational analysis in Jianan Plain, Taiwan." *International Journal of Remote Sensing* 40, no. 21 (2019): 8076-8092. DOI: <https://doi.org/10.1080/01431161.2018.1539275>
- [29]. Chen, Tao, Yejun Zhu, XinXin Xi, Haixiang Huan, and Wenfeng Ding. "Process parameter optimization and surface integrity evolution in the high-speed grinding of TiAl intermetallics based on grey relational analysis method." *The International Journal of Advanced Manufacturing Technology* 117, no. 9-10 (2021): 2895-2908. DOI: <https://doi.org/10.1007/s00170-021-07882-x>
- [30]. Singh, D. Narendar, C. Murugamani, Pravin R. Kshirsagar, Vineet Tirth, Saiful Islam, Sana Qaiyum, B. Suneela, Mesfer Al Duhayyim, and Yosef Asrat Waji. "IOT based smart wastewater treatment model for industry 4.0 using artificial intelligence." *Scientific Programming* 2022 (2022).
- [31]. Ragavan, V. K., N. S. Nithya, Anantharamaiah Vengala, Balambigai Subramanian, and C. Ambhika. "Refractive Index Biosensor-Based Detection of Mycobacterium Tuberculosis Using Sea Lion Political Optimizer and Deep Learning." *Plasmonics* (2025): 1-19.
- [32]. Gerus-Gościewska, Małgorzata, and Dariusz Gościewski. "Grey Relational Analysis (GRA) as an Effective Method of Research into Social Preferences in Urban Space Planning." *Land* 11, no. 1 (2022): 102. DOI: <https://doi.org/10.3390/land11010102>
- [33]. Kulkarni, Kalyani, Komalpreet Kaur, Nidhi Torvi, Ayushi Singh, and D. Annapurna. "Mitigating SSRF Threats: Integrating." In *Proceedings of International Conference on Paradigms of Communication, Computing and Data Analytics: PCCDA 2024, Volume 2*, p. 1. Springer Nature, 2025.
- [34]. Rani, Dr V. Vasudha, D. Vasavi, and K. Kumar. "Significance of multilayer perceptron model for early detection of diabetes over ml methods." *J. Univ. Shanghai Sci. Technol* 23, no. 08 (2021): 148-160.
- [35]. Ponnusamy, Vinoth Kumar, Padmanathan Kasinathan, Rajvikram Madurai Elavarasan, Vinoth Ramanathan, Ranjith Kumar Anandan, Umashankar Subramaniam, Aritra Ghosh, and Eklas Hossain. "A comprehensive review on sustainable aspects of big data analytics for the smart grid." *Sustainability* 13, no. 23 (2021): 13322.
- [36]. Kodati, Sarangam, Kumbala Pradeep Reddy, Sreenivas Mekala, PL Srinivasa Murthy, and P. Chandra Sekhar Reddy. "Detection of fake profiles on twitter using hybrid svm algorithm." In *E3S Web of Conferences*, vol. 309, p. 01046. EDP Sciences, 2021.
- [37]. Jyothi, P., and G. Pradeepini. "Heart disease detection system based on ECG and PCG signals with the aid of GKVLDNN classifier." *Multimedia Tools and Applications* 83, no. 10 (2024): 30587-30612.
- [38]. Priya, R., S. Jesintha, K. R. Chandrakala, and Anamika Singh. "Influence of Organizational Factors on Employee Work Engagement: Examining the Mediating Role of Job Satisfaction in the Indian Manufacturing Sector with Focus on Leadership, Development, and Reward Systems." *Pakistan Journal of Life & Social Sciences* 22, no. 2 (2024).
- [39]. Özcan, Sami, and Ali Kemal Çelik. "A comparison of TOPSIS, grey relational analysis and COPRAS methods for machine selection problem in the food industry of Turkey." *International Journal of Production Management and Engineering* 9, no. 2 (2021): 81-92. DOI: <https://doi.org/10.4995/ijpme.2021.14734>
- [40]. Esangbedo, Moses Olabhele, Jianwu Xue, Sijun Bai, and Caroline Olufunke Esangbedo. "Relaxed Rank Order Centroid Weighting MCDM Method With Improved Grey Relational Analysis for Subcontractor Selection: Photothermal Power Station Construction." *IEEE Transactions on Engineering Management* (2022). DOI: [10.1109/TEM.2022.3204629](https://doi.org/10.1109/TEM.2022.3204629)
- [41]. Selvakumari, R., K. Punitha, R. Priya, K. B. Muthukrishnan, and K. Thangaraju. "Thriving in turbulence: Resilience, self-efficacy, and work culture dynamics in South Indian IT enterprises." *International Journal of Information and Communication Business Management*. <https://doi.org/10.1504/IJICBM> (2024).
- [42]. Kumar, KRN Kiran, and K. Bhavani. "Folded spined cube: new topology in interconnection networks." In *2022 6th International Conference on Computing Methodologies and Communication (ICCMC)*, pp. 314-319. IEEE, 2022.
- [43]. Kavitha, V., D. Geetha, D. Karunkuzhali, and G. Manikandan. "A completely distributed blockchain period authentication framework." In *Journal of Physics: Conference Series*, vol. 1964, no. 4, p. 042047. IOP Publishing, 2021.
- [44]. Kumar A, Ranjith, Ahmed Sayed M Metwally, Ghulam Abbas Ashraf, and Bheema Lingaiah Thamineni. "Smart IoT-based water treatment with a Supervisory Control and Data Acquisition (SCADA) system process." *Water reuse* 13, no. 3 (2023): 411-431.
- [45]. Canbulut, Gülçin, Erkan Köse, and Oğuzhan Ahmet Arik. "Public transportation vehicle selection by the grey relational analysis method." *Public Transport* (2021): 1-18. DOI: <https://doi.org/10.1007/s12469-021-00271-3>

- [46]. Touati, Sofiane, Laala Ghelani, Amina Zemmouri, and Haithem Boumediri. "Optimization of gas carburizing treatment parameters of low carbon steel using Taguchi and grey relational analysis (TA-GRA)." *The International Journal of Advanced Manufacturing Technology* 120, no. 11-12 (2022): 7937-7949. DOI: <https://doi.org/10.1007/s00170-022-09302-0>.
- [47]. Kurinjimalar Ramu, M. Ramachandran, Ramya sharma, Prabakaran Nanjundan, "Urban Agriculture Overview of Sustainability Using GRA Methodology", *Building Materials and Engineering Structures*, 2(3), September 2023, 7-14.
- [48]. Prabhu, Devadath C., S. Ramya Nivedha, Ayush Kumar, K. Sajeevan, and D. Annapurna. "Multiple Image Steganography using LSB-DCT."
- [49]. Mohan, VakaMurali, MalliKarjuna Reddy, and KRN Kiron Kumar. "A New Approach to Optical Networks Security: Attack-Aware Routing and Wavelength Assignment." In *IJCA Special Issues on "2nd National Conference-Computing, Communication and Sensor Network" CCSN*. 2011.
- [50]. Bogireddy, Srinivasa Rao, and Nagaraju Dasari. "Comparative analysis of ChatGPT-4 and LLaMA: Performance evaluation on text summarization, data analysis, and question answering." In *2024 15th International Conference on Computing Communication and Networking Technologies (ICCCNT)*, pp. 1-7. IEEE, 2024.
- [51]. Bogireddy, Srinivasa Rao, and Nagaraju Dasari. "Comparative analysis of ChatGPT-4 and LLaMA: Performance evaluation on text summarization, data analysis, and question answering." In *2024 15th International Conference on Computing Communication and Networking Technologies (ICCCNT)*, pp. 1-7. IEEE, 2024.
- [52]. Nayeemuddin, M. Ramachandran, Chinnasami Sivaji, and Prabakaran Nanjundan. "A Study on Renewable Energy and Wind Power." *REST Journal on Advances in Mechanical Engineering* 1, no. 2 (2022): 10-18.
- [53]. Bogireddy, Srinivasa Rao, and Haritha Murari. "Enhancing crop yield prediction through random forest classifier: A comprehensive approach." In *2024 5th International Conference on Smart Electronics and Communication (ICOSEC)*, pp. 1663-1668. IEEE, 2024.
- [54]. Mahendiran, A., and R. Priya. "An investigation of rural college teachers' and students' attitude towards integration of ict in education: A comparative study." *SMART Journal of Business Management Studies* 17, no. 1 (2021): 1-10.
- [55]. Murugamani, C., S. Shitharth, S. Hemalatha, Pravin R. Kshirsagar, K. Riyazuddin, Quadri Noorulhasan Naveed, Saiful Islam, Syed Parween Mazher Ali, and Areda Batu. "Machine Learning Technique for Precision Agriculture Applications in 5G-Based Internet of Things." *Wireless Communications and Mobile Computing* 2022, no. 1 (2022): 6534238.
- [56]. Jaganathan Rajamanickam, M. Ramachandran, Ramya sharma, Chinnasami Sivaji, "Distributed Generation (DG) system using COPRAS method", *REST Journal on Advances in Mechanical Engineering*, 2(3) September 2023, 11-22.
- [57]. Reshma, V. K., Nancy Arya, Sayed Sayeed Ahmad, Ihab Wattar, Sreenivas Mekala, Shubham Joshi, and Daniel Kraih. "[Retracted] Detection of Breast Cancer Using Histopathological Image Classification Dataset with Deep Learning Techniques." *BioMed Research International* 2022, no. 1 (2022): 8363850.
- [58]. Bogireddy, Srinivasa Rao, and Haritha Murari. "Enhancing crop yield prediction through random forest classifier: A comprehensive approach." In *2024 5th International Conference on Smart Electronics and Communication (ICOSEC)*, pp. 1663-1668. IEEE, 2024.
- [59]. Subashini, G. S., and S. M. Kumar. "An investigation on adoption of lean production principles in kitchenware manufacturing industries." *Interdisciplinary Journal of Contemporary Research in Business* 4, no. 9 (2013): 271-279.