



Recent trends in Management and Commerce

Vol: 1(2), 2020

REST Publisher

ISBN: 978-81-936097-6-7

Website: <http://restpublisher.com/book-series/rmc/>



Evaluation of Experimental Social Psychology using SPSS Analysis

Deshpande Padmavati Vikrant

SSt College of Arts and Commerce, Maharashtra, India.

Email: padmadeshpande@sstcollege.edu.in

Abstract

Experimental psychologists use scientific methods to gather information and behaviour research. Often, their work builds to one important discovery or conclusion, one have a look at a time. Few researchers have dedicated their complete careers to answering a complicated studies question. These psychologists work in a variety of settings, consisting of universities, research centres, government agencies, and private agencies. The attention of their research is as various because the settings wherein they paintings. Often, non-public interest and academic historical past will affect the research questions they pick out to discover. In a experience, all psychologists may be considered experimental psychologists because studies is the muse of the field, and lots of psychologists divide their professional attention between research, affected person care, coaching, or application administration. Experimental psychologists, but, often consciousness their complete interest on research—its design, implementation, evaluation, and dissemination. An example of experimental psychological research could be to conduct a look at to see if sleep deprivation impairs performance on a riding take a look at. The experimenter can manage for different variables that might have an effect on the results, consisting of various the amount of sleep individuals get the night earlier than. Especially the ones who've targeted their careers in experimental psychology make a contribution to work in subfields. For example, they use medical research to provide insights into improving teaching and studying, developing more secure offices and transportation systems, enhancing substance abuse treatment packages, and promoting wholesome toddler improvement.

Keywords: Experimental psychology, Cognitive and affective measures Accessibility and inhibition of goal-related Constructs, Evaluation and devaluation (conscious and non-conscious), Experience, Perceptual biases, Behavioural measures Speed, Performance, Choice, SPSS analysis.

Introduction

Experimental psychologists use scientific methods to accumulate statistics and behavior research. Often, their paintings builds to at least one major discovery or conclusion, one take a look at a time. Few researchers have dedicated their entire careers to answering a complex research query. Experimental psychologists use scientific techniques to accumulate records and behavior studies. They can work in an expansion of settings such as universities, studies facilities, government and personal groups. According to the American Psychological Association, experimental psychologists often work for universities, authority's corporations, personal studies facilities, and nonprofits agencies. 1 While they frequently examine the human mind and conduct, they can also look at the behaviour of animals. Cognitive inhibition refers to the capacity of the mind to tune out stimuli that aren't applicable to the venture/method to hand or the present day nation of thoughts. Cognitive inhibition can be whole or partial, intentional or in any other case. Feature maximum colloquially associated with cognitive manipulate. When we think about strength of mind or willpower, its miles often our capability to forestall ourselves from doing responsibilities that we assume are pointless, distracting, or wrong. A deterrent is a force that forestalls some thing from taking place – and often comes from you. Shy human beings are often said to be afflicted by inhibitions. Some obstacles are good, which means they block the lives of people we do not like. Devaluation, a deliberate downward adjustment inside the official trade price, depreciates the fore; conversely, a revaluation is an upward change within the fee of foreign money. A critical impact of demonetisation is that it makes the domestic fore cheaper relative to other currencies. An legit discount inside the alternate value of a currency by way of lowering its value relative to its gold equal or another currency. Especially a decrease in rank or status A depreciation is a reduction in value at a floating exchange rate. A major benefit of demonetisation is that it makes a country or currency area's exports more competitive. This will increase foreign definition of experience is that something has to happen. An example of an experience is a first kiss. : to observe certain phenomena; undergo a particular feeling or process; or do some act which may change one or contribute to one's knowledge, ideas or abilities. Perceptual for example, a team member may not invite a member of the team to a social event after work because they feel that they do not share similar interests with the team. Perceptual bias makes an objective understanding of members of diverse groups difficult. Academic performance is more than a child's ability to meet academic standards. It should also have reference to the development of children's communication skills, social skills and personality. the right,

power or opportunity to choose; Choice: The child has no choice in going to school. A chosen person or thing deserves to be chosen: This book is my choice. He was one of many shortlisted for the award. An alternative: There is another choice.

Experimental psychology

Psychology is a question left to the historian of science. Nevertheless, one can speculate that some social psychologists share a fundamentally cynical view—not necessarily always consciously—but about the extent to which experimental methods can in principle add substantially to our knowledge of social behaviour Experimental work. The Gestalt theory of thinking is discussed next. Various theories of the relation between thought, motor response and language are considered in interesting chapters. The author presents three aspects of language which he refers to as articulation, induction and reference. Similar triangulations were previously proposed by Buhler and McCranahan. Humphrey proposes a rough classification of aphasia based on his theory of speech function. In a chapter on generalization, he expresses the idea that generalization is synonymous with the ability to learn from experience. The book concludes with a brief description of the current state of thought theory [6]. Experimental psychology. The oft-heard criticism that this original work belies its title because it fails to emphasize experimental topics as much as it emphasizes movements has now been answered by the author. He did not think of it as a complete coverage, but only as an introduction. This second volume, covering the fields of sensation and perception, is a history of more authentic experimentation. A promised third volume, covering the rest of the field, revolves around the traditionally understood historical picture of the domain of orthodox, experimental psychology, human, adult, normal, common experience, and behavior. It is hoped that the teacher will be diligent in his endeavors [8]. The experimenter knows that the system he is studying can usually be isolated. The effects are rarely sensitive to what happens outside the lab room. What happens to one animal is generally not allowed to affect the behavior of other animals. But the human subject's reaction to the experiment is influenced by his past and recent experiences and what he has heard about psychologists [12]. Experimental work on modifying training and reward in prescribing practical teaching techniques. He rejected the old concept of general teacher relations training and accepted the fact that training should be carried out in specific contexts. He introduced his concepts of reinforcement by noting that students should work on problems where a student can see the use of his behavior as a result of executing a successful response [13]. Test, and despite fundamental objections to the assessment procedures used in the test, it seems to the authors, based on an examination of the forms in groups 2, 3 and 4 and considered above. Arguably, naming a form immediately prior to visualization can in many cases change the way it is reproduced. Apart from the main results just mentioned, the results of the experiment confirm in many ways the results already published by Gibson, and differ from these results in some minor respects [14]. Experimental psychology has suffered substantially by means of ignoring the complete subject of individual variations, and taking into consideration personality variables which can be theoretically linked to based and impartial variables can prove to noticeably boom the amount of variance accounted for. Much of this variability is now driven into the error time period, accordingly seriously decreasing the predictive accuracy of the theory or even main to replication failure [9]. Experimental cognitive psychology and information of the capacities and homes of running reminiscence shaped the development of the multicomponent version. Research, in the main primarily based on dual-venture experimental designs and neurobiological proof, has furnished precious records approximately impartial shops and processes, the nature of representations in character shops, their protection and manipulation mechanisms, and aspect mechanisms. Working memory is interrelated, and the position they play in different cognitive abilities [1]. Experimental methods need to growth intrinsic motivation, whereas highlighting success or rewards may additionally growth the extrinsic or outcome-orientated dimension of motivation. From the identical perspective, situations or experimental approaches that emphasize guidelines and personal values (e.G., integrity, accuracy) might also boom the mechanism-focused size of motivation. Creating such experimental environments will permit researchers to achieve a clearer photograph of the dimension of motivation of hobby [3]. An extra benefit of informational recognition testing is that the examiner can equally without difficulty examine the situation's performance on logical inference and concrete statements associated with the authentic observe substances. Performance may be as compared to practical objects. Clearly fake and ill-described filler test sentences can be used to manipulate for reaction bias and to make comparisons with the hypothesized that means [15]. Tests on this question are not critical, it is suggested, because experimental isolation of the influence of composition is imperfect or, more fundamentally, because the concept of composition is unclear and used with different meanings by different investigators. For example, Dolman suggests that learning does not depend on intentions because of the facts of implicit learning obtained by running a maze in rats (108). However, he believes that learning depends on having or identifying expectations [7]. Experiments proved this and established that "the attachment tendency is highly directional" (p. 24), meaning that people in a state of anxiety seek the company of others who are similarly distressed. The connection between anxiety and parallel ten? Deny was found to be independent of opportunity to interact. In chapters on ordinal status, Schechter establishes that "early-born [or singleton] subjects proved to be more anxious and fearful than later-born" (p. 88). A similar correlation was observed between starvation and fusion tendency [10]. Experimental data consisted mostly of verbal subjective reports and judgments of sophisticated adults who were subjected to various visual and auditory matching tests, questionnaires, and association tests. "The ultimate grammar of its organization, and to determine the individual language of the self that transforms the individual into the general [4]. The Language of Personality The present volume should be considered the first in a series that forms the experimental basis for the statistical analysis, we used SPSS software version 16.

Cognitive and affective measures Accessibility and inhibition of goal-related constructs

The cognitive movements of second-generation antipsychotic drugs are also relatively debatable. This system has led to considerable re-examination of the maximum suitable mechanisms to target for remedy in schizophrenia, and the area of SCAN isn't any exception. For an in depth description of this assembly, use of internet-based surveys, generating talks with the aid of simple scientists, and consensus discussions main to the synthesis of goal structures/cognitive systems for treatment improvement [21]. However, as we observed clear proof for differential traits of the affective and cognitive components, the full score have to be used with advice. Specifically, the affective factor became unrelated to verbal IQ and, at better degrees, become associated with more danger of anxiety and depression-kind troubles in girls. The cognitive aspect is associated with IQ and, to a lesser quantity, risk for externalizing troubles in boys. There were also predictable developmental differences in subscales. Cognitive empathy improved with children's age and was positively associated with verbal IQ, while affective empathy was unrelated to age and IQ. Based on impartial observations of behaviour, relational and cognitive rankings are related to much less aggressive and extra clever behaviour towards different youngsters and pets [23]. Accessibility measured with a lexical choice venture should be unselective by means of suppression efforts. Equally critical, accessibility in a lexical decision undertaking has the acceptable phenomenon of improving one's performance pace and cognition, so there may be no strategic motive to suppress primed buildings [24]. The reason of the present day research turned into to study the effects of preference on cognitive and affective engagement. This question is important to the talk approximately the merits of checking out inside the classroom as a way to motivate students, increase attempt and, in turn, cognitive engagement [22].

Evaluation and devaluation (conscious and non-conscious)

Depreciation of Consumer Households Taiwan Version (DCFS-TW). Additional psychometric evaluation of the DCFS-TW become also performed to determine whether the DCFS-TW is suitable for clinical use. We hypothesized that Model three (ie, a one-dimensional model controlling for word effects) might carry out higher than the opposite two models and the one-dimensional model. We hypothesized that the DCFSTW has quality concurrent validity with other related measures and that the DCFS-TW has the ability to distinguish caregivers of various forms of PWMIs with recognize to scientific characteristics [26]. Evaluation and mechanisms for inclusion and exclusion of feel left out and display consequences for forget: pride of fundamental human wishes, reduced experience in courting evaluation, more negative moods, decrease shallowness, and superior urges to act aggressively [27]. Devaluations purpose state of no activity thru raised import charges and better wage needs, so markets count on one devaluation to be followed via another to house additional state of being inactive. In addition, markets will call for higher hobby charges to offset the chance of extra volatility. So we will rightly finish that we're looking to avoid each excessive hobby fees and high charges [28]. Cognitive assessment of emotional response (Hatnett, 2002). It can be equated with the feeling that follows a superb evaluation of a hard work enjoy (Pramathat & Triedger, 1993). Because pleasure is multidimensional, women may be satisfied with some aspects of their reports and upset with others, and fine and poor emotions may additionally coexist (Waldenstrom, 1999). Similarly, pleasure with care is not synonymous with fantastic and experiential satisfaction, however may be a contributing thing to it (Waldenstrom, Borg, Olsson, Skold, & Wall, 1996). A woman won't be glad with the care she receives, however is happy with her very own behaviour and feels wonderful approximately her revel in [29].

Experience

Most tourism experiences are likely to involve at least some emotional experience. Therefore, they can be described as universal components of tourism. The essence of emotional experiences is the mental perception they create. It is the effect created in the mind of the subject who experiences tourism. The strength of emotions is very different. This is reflected in the immediate reactions (clapping, cheering, laughing, crying) and the length of the resulting "mental imprints". The duration of memories—how long and strongly people remember them—represents good criteria for evaluating these brands [31]. The experimental assignment become described to both subjects simultaneously, with the experimenter explaining that it become essential for the worker and the manager to master the undertaking necessities. The assignment is to find unique gadgets in a department shop catalog and duplicate their charges onto index playing cards wherein the gadgets are identified. This undertaking was used in the take a look at due to the fact (a) it produced without problems measurable overall performance results, and (b) it could be tailored to the fee interaction manipulation [32].

Perceptual biases

Perceptual biases recognized by using psychologists are common to most individuals (Tversky and Kahneman 1981). A comparable bias in public opinion has been found inside the growing literature on public administration (Baekgaard and Serritzlew 2016; Battaglio et al. 2019; Bellé, Cantarelli, and Heisman and Andersen (2016). A recent article in Public Administration Review observed negative perspectives. Students in Denmark perceive hospitals on more than one dimension. The test confirmed that students have a completely terrible view of the general public sector in phrases of efficiency, effectiveness and purple tape and modesty [33].

Behavioural measures Speed

Behavioural measurement was obtained with infrared detectors attached to video cameras. Equipment was set up at various locations on four different roads to record the speed, time and date of all passing vehicles. Each road included speed limits of

30 mph, 40 mph, and 60 mph and was chosen to match those described in the scenarios used in the questionnaire (see below). Cars included in the study were observed in each of the three speed zones [37]. Behavioural measures drawing attention far from, we did not hit upon institution variations in any outcome measures, except for exchange in interest bias [38]. Behavioural measures included 'wide variety of drunken times within the past 6 months' (blacking out when drunk) and percentage of times under the influence of alcohol while ingesting purpose a few confusion inside the clinical literature and amongst the general public, many definitions faucet into closely related phenomena [35]. Behavioural measures inclusive of response instances can be used, however those encompass no longer best visual processing but additionally the time required to manner a response. However, event-associated potentials (ERPs) can every so often display signs of neural processing previous to motor output [36].

Performance

Performance is important to a person. Accomplishing duties and performing at a high stage can offer pride with emotions of mastery and pride. Underperformance and now not accomplishing goals may be skilled as dissatisfaction or even non-public failure. Also, when performance is recognized by means of others inside the organization, it's far often rewarded with monetary and other advantages. Performance is a crucial, if now not the simplest prerequisite for destiny profession increases and achievement within the labour market [39]. An exploratory prmclpal issue analysis become then used to evaluate and show the underlying shape of the final objects, for the reason that object evaluation reduced the quantity of overall performance additives, a 6-issue, vandal rotated solution changed into considered within the ensuing aspect structure, but, the sixth aspect had a fee less than 1 0, and "with other employees within the company The loadings for the rummy objects associated with the "top job" subcomponent pass-loaded with other elements "teamwork" Is no longer viewed as a unique dimension of performance for these salespeople, however as a substitute as an aspect in their performance on different dimensions and the last objects for this subscale have been eliminated [40]. A overall performance-analysis toolkit designed especially for use on massive-scale structures with many heaps of cores, consisting of IBM Blue Jean and Gray XT, however additionally properly perfect for small- and medium-scale HPC systems. Scalaska supports an incremental overall performance-analysis method that combines runtime abstractions through event tracing with in-depth research of concurrent behaviour, following a method of successively delicate dimension configurations. A unique feature is the potential to discover wait states due to unevenly allotted workloads. Especially while seeking to scale communication-intensive applications to huge processor counts, such wait states can present fundamental challenges to accomplishing appropriate overall performance [41].

Choice

In a comparative scoring check, subjects were requested to make a 2d choice after indicating their first choice. For example, if NR subjects have been trying to decide the range, they would need to pick one in every of the intense ratings for their first exam and the alternative for his or her 2d examination. The facts in Table 1 honestly help edge [44]. Horn and Lowe (1993) furnished check responses in line with a simple rule, ``the similarly to the proper the light is, the more likely I am to respond on the proper button." Evidence that individuals' alternatives have been prompted via the verbal regulations they developed approximately how to reply [43]. Two studies involving a choice between alternatives called simultaneous schedules were omitted In both cases, the choice between food-producing alternatives was stronger under fitness. The choices between alternatives that were the choice situations are consistent with the data fitted in my experiment [42].

TABLE 1. Descriptive Statistics

	N	Range	Minimum	Maximum	Mean	Std. Deviation
Cognitive and affective measures	30	4	1	5	3.13	1.106
Evaluation and devaluation	30	4	1	5	3.00	1.259
Experience	30	4	1	5	3.23	1.278
Perceptual biases	30	4	1	5	3.27	1.143
Behavioural measures Speed	30	4	1	5	3.30	1.512
Performance	30	4	1	5	3.43	1.357
Choice	30	4	1	5	2.97	1.351
Valid N (listwise)	30					

Table 1 shows the descriptive statistics values for analysis N, range, minimum, maximum, mean, standard deviation Cognitive and affective measures, Evaluation and devaluation, Experience, Perceptual biases, Behavioural measures Speed, Performance, Choice this also using.

TABLE 2. Frequencies Statistics

Statistics								
		Cognitive and affective measures	Evaluation and devaluation	Experience	Perceptual biases	Behavioural measures Speed	Performance	Choice
N	Valid	30	30	30	30	30	30	30
	Missing	0	0	0	0	0	0	0
Mean		3.13	3.00	3.23	3.27	3.30	3.43	2.97
Std. Error of Mean		.202	.230	.233	.209	.276	.248	.247
Median		3.00	3.00	3.00	3.00	3.00	3.00	3.00
Mode		3	3	3	3	5	5	3
Std. Deviation		1.106	1.259	1.278	1.143	1.512	1.357	1.351
Variance		1.223	1.586	1.633	1.306	2.286	1.840	1.826
Skewness		-.444	.333	-.045	-.269	-.101	-.071	-.025
Std. Error of Skewness		.427	.427	.427	.427	.427	.427	.427
Kurtosis		.204	-.741	-.860	-.071	-1.517	-1.306	-.992
Std. Error of Kurtosis		.833	.833	.833	.833	.833	.833	.833
Range		4	4	4	4	4	4	4
Minimum		1	1	1	1	1	1	1
Maximum		5	5	5	5	5	5	5
Sum		94	90	97	98	99	103	89
Percentiles	25	3.00	2.00	2.00	3.00	2.00	2.00	2.00
	50	3.00	3.00	3.00	3.00	3.00	3.00	3.00
	75	4.00	4.00	4.25	4.00	5.00	5.00	4.00

Table 2 Show the Frequency Statistics in Experimental psychology Cognitive and affective measures, Evaluation and devaluation, Experience, Perceptual biases, Behavioural measures Speed, Performance, Choice curve values are given

Cronbach's Alpha Based on Standardized Items	Alpha on N of Items
.744	7

Table 3 shows the Cronbach's Alpha Reliability result. The overall Cronbach's Alpha value for the model is .744 which indicates 74% reliability. From the literature review, the above 50% Cronbach's Alpha value model can be considered for analysis

TABLE 4. Reliability Statistic individual

	Cronbach's Alpha if Item Deleted
Cognitive and affective measures	.710
Evaluation and devaluation	.758
Experience	.704
Perceptual biases	.721
Behavioral measures Speed	.695
Performance	.712
Choice	.685

Table 4 Shows the Reliability Statistic individual parameter Cronbach's Alpha Reliability results. The Cronbach's Alpha value for Cognitive and affective measures - .710, Evaluation and devaluation - .758, Experience- .704, Perceptual biases- .721, Behavioral measures Speed- .695, Performance- .712 Choice- .685 this indicates all the parameter can be considered for analysis.

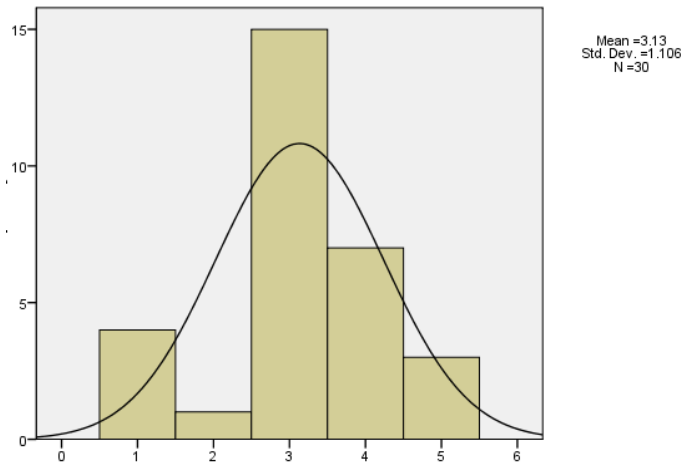


FIGURE 1. Cognitive and affective measures

Figure 1 shows the histogram plot for Cognitive and affective measures from the figure it is clearly seen that the data are slightly Left skewed due to more respondent chosen 3 for Cognitive and affective measures except the 2 value all other values are under the normal curve shows model is significantly following normal distribution.

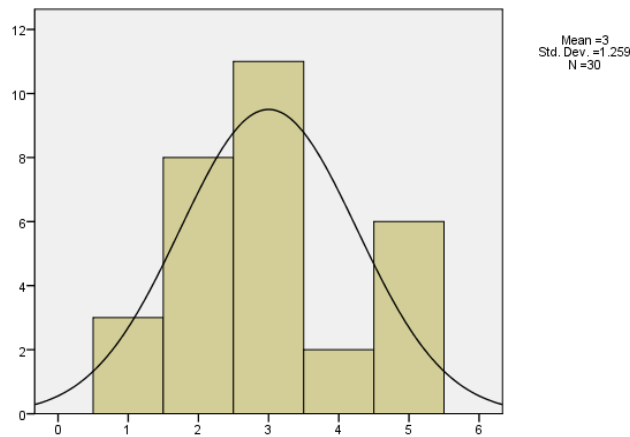


FIGURE 2. Evaluation and devaluation

Figure 2 shows the histogram plot for Evaluation and devaluation from the figure it is clearly seen that the data are slightly Right skewed due to more respondent chosen 3 for Evaluation and devaluation except the 2 value all other values are under the normal curve shows model is significantly following normal distribution.

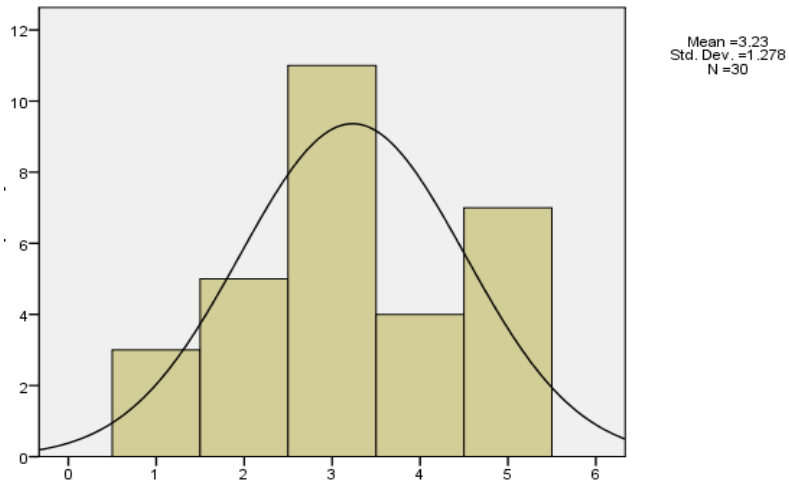


FIGURE 3. Experience

Figure 3 shows the histogram plot for Experience from the figure it is clearly seen that the data are slightly Left skewed due to more respondent chosen 3 for Experience except the 2 value all other values are under the normal curve shows model is significantly following normal distribution.

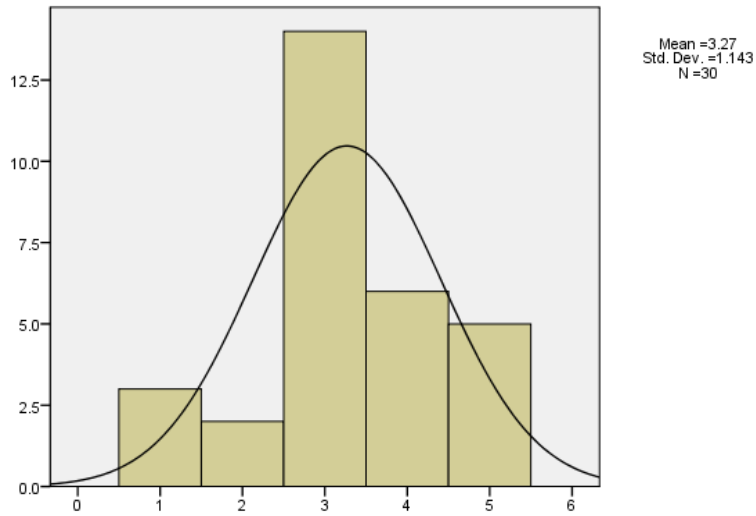


FIGURE 4. Perceptual biases

Figure 4 shows the histogram plot for Perceptual biases from the figure it is clearly seen that the data are slightly Left skewed due to more respondent chosen 3 for Perceptual biases except the 2 value all other values are under the normal curve shows model is significantly following normal distribution.

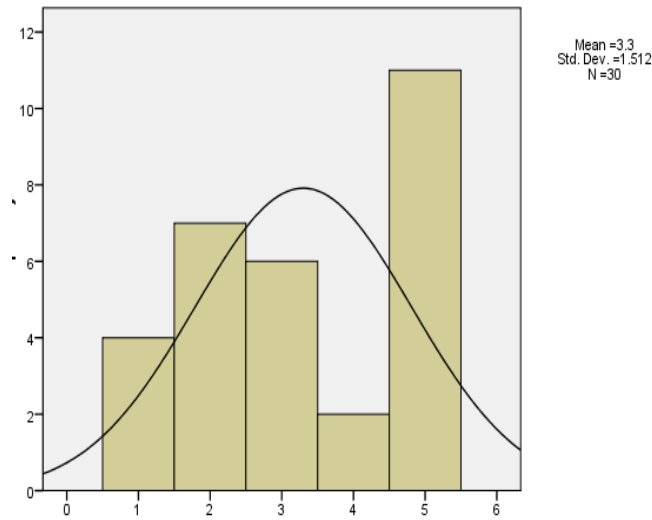


FIGURE 5. Behavioural measures Speed

Figure 5 shows the histogram plot for Behavioural measures Speed from the figure it is clearly seen that the data are slightly Right skewed due to more respondent chosen 5 for Behavioural measures Speed except the 3 value all other values are under the normal curve shows model is significantly following normal distribution

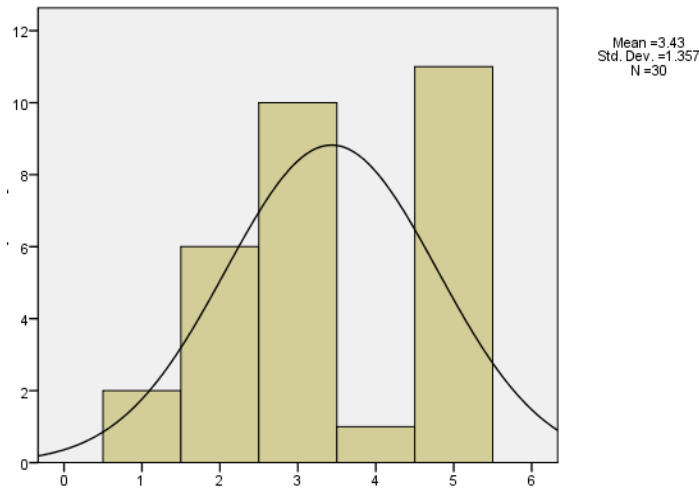


FIGURE 6. Performance

Figure 6 shows the histogram plot for Performance from the figure it is clearly seen that the data are slightly Right skewed due to more respondent chosen 5 for Performance except the 2 value all other values are under the normal curve shows model is significantly following normal distribution

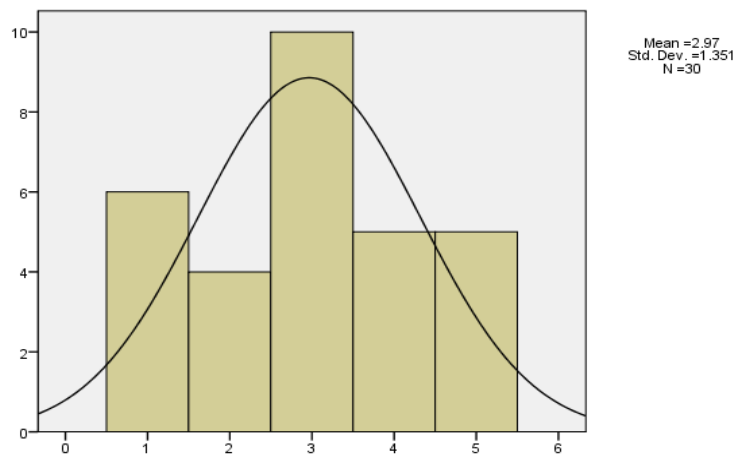


FIGURE 7. Choice

Figure 6 shows the histogram plot for Choice from the figure it is clearly seen that the data are slightly Right skewed due to more respondent chosen 3 for Choice except the 2 value all other values are under the normal curve shows model is significantly following normal distribution

TABLE 5. Correlations

	Cognitive and affective measures	Evaluation and devaluation	Experience	Perceptual biases	Behavioural measures Speed	Performance	Choice
Cognitive and affective measures	1	.149	.368*	.407*	.264	.305	.372*
Evaluation and devaluation	.149	1	.214	.096	.290	.020	.203
Experience	.368*	.214	1	.499**	.319	.198	.344
Perceptual biases	.407*	.096	.499**	1	.172	.212	.296
Behavioural measures Speed	.264	.290	.319	.172	1	.506**	.427*
Performance	.305	.020	.198	.212	.506**	1	.497**
Choice	.372*	.203	.344	.296	.427*	.497**	1

*. Correlation is significant at the 0.05 level (2-tailed).

**. Correlation is significant at the 0.01 level (2-tailed).

Table 5 shows the correlation between motivation parameters for Cognitive and affective measures. For Perceptual biases is having highest correlation with Evaluation and devaluation and having lowest correlation. Next the correlation between motivation parameters for Evaluation and devaluation. For Behavioural measures Speed is having highest correlation with Performance and having lowest correlation. Next the correlation between motivation parameters for Experience. For Perceptual biases is having highest correlation with Performance and having lowest correlation. Next the correlation between motivation parameters for Perceptual biases. For Experience is having highest correlation with Evaluation and devaluation and having lowest correlation. Next the correlation between motivation parameters for Behavioural measures Speed. For Performance is having highest correlation with Perceptual biases and having lowest correlation. Next the correlation between motivation parameters for Performance. For Behavioural measures Speed is having highest correlation with Experience and having lowest correlation. Next the correlation between motivation parameters for Choice. For Performance is having highest correlation with Evaluation and devaluation and having lowest correlation.

Conclusion

Psychology is a question left to the historian of science. Nevertheless, one can speculate that some social psychologists share a fundamentally cynical view—not necessarily always consciously—but about the extent to which experimental methods. The cognitive movements of second-generation antipsychotic drugs are also relatively debatable. This system has led to considerable re-examination of the maximum suitable mechanisms to target for remedy in schizophrenia, and the area of SCAN isn't any exception. Depreciation of Consumer Households Taiwan Version (DCFS-TW). Additional psychometric evaluation of the DCFS-TW become also performed to determine whether the DCFS-TW is suitable for clinical use. Most

tourism experiences are likely to involve at least some emotional experience. Therefore, they can be described as universal components of tourism. The essence of emotional experiences is the mental perception they create. Perceptual biases recognized by using psychologists are common to most individuals (Tversky and Kahneman 1981). A comparable bias in public opinion has been found inside the growing literature on public administration Behavioural measurement was obtained with infrared detectors attached to video cameras. Equipment was set up at various locations on four different roads to record the speed, time and date of all passing vehicles. Performance is important to a person. Accomplishing duties and performing at a high stage can offer pride with emotions of mastery and pride. In a comparative scoring check, subjects were requested to make a 2d choice after indicating their first choice. For example, if NR subjects have been trying to decide the range, they would need to pick one in every of the intense ratings for their first exam and the alternative for his or her 2d examination. The Cronbach's Alpha Reliability result. The overall Cronbach's Alpha value for the model is .744 which indicates 74% reliability. From the literature review, the above 50% Cronbach's Alpha value model can be considered for analysis.

Reference

1. Ring, Kenneth. "Experimental social psychology: Some sober questions about some frivolous values." *Journal of Experimental Social Psychology* (1967).
2. Eickhoff, Louise FW. "The aetiology of schizophrenia in childhood." *Journal of Mental Science* 98, no. 411 (1952): 229-234.
3. Boring, Edwin Garrigues. "Sensation and perception in the history of experimental psychology." (1942).
4. Cronbach, Lee J. "Beyond the two disciplines of scientific psychology." *American psychologist* 30, no. 2 (1975): 116.
5. Glaser, Robert. "Components of a psychology of instruction: Toward a science of design." *Review of educational research* 46, no. 1 (1976): 1-24.
6. Carmichael, Leonard, Homer P. Hogan, and A. A. Walter. "An experimental study of the effect of language on the reproduction of visually perceived form." *Journal of experimental Psychology* 15, no. 1 (1932): 73.
7. Eysenck, Hans J. "Personality and experimental psychology: the unification of psychology and the possibility of a paradigm." *Journal of Personality and social Psychology* 73, no. 6 (1997): 1224.
8. Repovš, Grega, and Alan Baddeley. "The multi-component model of working memory: Explorations in experimental cognitive psychology." *Neuroscience* 139, no. 1 (2006): 5-21.
9. Touré-Tillery, Maferima, and Ayelet Fishbach. "How to measure motivation: A guide for the experimental social psychologist." *Social and Personality Psychology Compass* 8, no. 7 (2014): 328-341.
10. Harris, Richard J., and Gregory E. Monaco. "Psychology of pragmatic implication: Information processing between the lines." *Journal of experimental psychology: General* 107, no. 1 (1978): 1-22.
11. Gibson, James J. "A critical review of the concept of set in contemporary experimental psychology." *Psychological bulletin* 38, no. 9 (1941): 781.
12. Lihoreau, Mathieu, Jean-Louis Deneubourg, and Colette Rivault. "Collective foraging decision in a gregarious insect." *Behavioral Ecology and Sociobiology* 64, no. 10 (2010): 1577-1587.
13. Wolff, Werner. "The expression of personality; experimental depth psychology." (1943).
14. Carter, Cameron S., Deanna M. Barch, Ruben Gur, Raquel Gur, Amy Pinkham, and Kevin Ochsner. "CNTRICS final task selection: social cognitive and affective neuroscience-based measures." *Schizophrenia bulletin* 35, no. 1 (2009): 153-162.
15. Dadds, Mark R., Kirsten Hunter, David J. Hawes, Aaron DJ Frost, Shane Vassallo, Paul Bunn, Sabine Merz, and Yasmee El Masry. "A measure of cognitive and affective empathy in children using parent ratings." *Child psychiatry and human development* 39, no. 2 (2008): 111-122.
16. Liberman, Nira, Jens Förster, and E. Tory Higgins. "Completed vs. interrupted priming: Reduced accessibility from post-fulfillment inhibition." *Journal of Experimental Social Psychology* 43, no. 2 (2007): 258-264.
17. Flowerday, Terri, and Gregory Schraw. "Effect of choice on cognitive and affective engagement." *The Journal of Educational Research* 96, no. 4 (2003): 207-215.
18. Chang, Chih-Cheng, Jian-An Su, Kun-Chia Chang, Chung-Ying Lin, Mirja Koschorke, and Graham Thornicroft. "Perceived stigma of caregivers: Psychometric evaluation for Devaluation of Consumer Families Scale." *International journal of clinical and health psychology* 18, no. 2 (2018): 170-178.
19. Wirth, James H., Donald F. Sacco, Kurt Hugenberg, and Kipling D. Williams. "Eye gaze as relational evaluation: Averted eye gaze leads to feelings of ostracism and relational devaluation." *Personality and social psychology bulletin* 36, no. 7 (2010): 869-882.
20. Hughes Hallett, Andrew J., and Simon Wren-Lewis. "Is there life outside the ERM? An evaluation of the effects of sterling's devaluation on the UK economy." *International Journal of Finance & Economics* 2, no. 3 (1997): 199-216.
21. Hughes Hallett, Andrew J., and Simon Wren-Lewis. "Is there life outside the ERM? An evaluation of the effects of sterling's devaluation on the UK economy." *International Journal of Finance & Economics* 2, no. 3 (1997): 199-216.
22. Aho, Seppo K. "Towards a general theory of touristic experiences: Modelling experience process in tourism." *Tourism review* (2001).
23. Greenberg, Jerald. "Motivation to inflate performance ratings: Perceptual bias or response bias?." *Motivation and Emotion* 15, no. 1 (1991): 81-97.
24. Meier, Kenneth J., Austin P. Johnson, and Seung-Ho An. "Perceptual bias and public programs: The case of the United States and hospital care." *Public Administration Review* 79, no. 6 (2019): 820-828.

25. Conner, Mark, Rebecca Lawton, Dianne Parker, Kathryn Chorlton, Antony SR Manstead, and Stephen Stradling. "Application of the theory of planned behaviour to the prediction of objectively assessed breaking of posted speed limits." *British journal of psychology* 98, no. 3 (2007): 429-453.
26. Van Bockstaele, Bram, Bruno Verschuere, Ernst HW Koster, Helen Tibboel, Jan De Houwer, and Geert Crombez. "Effects of attention training on self-reported, implicit, physiological and behavioural measures of spider fear." *Journal of Behavior Therapy and Experimental Psychiatry* 42, no. 2 (2011): 211-218.
27. Scaife, J. C., and T. Duka. "Behavioural measures of frontal lobe function in a population of young social drinkers with binge drinking pattern." *Pharmacology Biochemistry and Behavior* 93, no. 3 (2009): 354-362.
28. Thorpe, Simon, Denis Fize, and Catherine Marlot. "Speed of processing in the human visual system." *nature* 381, no. 6582 (1996): 520-522.
29. Sonnentag, Sabine, and Michael Frese. "Performance concepts and performance theory." *Psychological management of individual performance* 23, no. 1 (2002): 3-25.
30. Behrman, Douglas N., and William D. Perreault Jr. "Measuring the performance of industrial salespersons." *Journal of Business Research* 10, no. 3 (1982): 355-370.
31. Geimer, Markus, Felix Wolf, Brian JN Wylie, Erika Ábrahám, Daniel Becker, and Bernd Mohr. "The Scalasca performance toolset architecture." *Concurrency and computation: Practice and experience* 22, no. 6 (2010): 702-719.
32. Wheeler, Ladd, Kelly G. Shaver, Russell A. Jones, George R. Goethals, Joel Cooper, James E. Robinson, Charles L. Gruder, and Kent W. Butzine. "Factors determining choice of a comparison other." *Journal of Experimental Social Psychology* 5, no. 2 (1969): 219-232.
33. Fisher, Wayne W., and James E. Mazur. "Basic and applied research on choice responding." *Journal of applied behavior analysis* 30, no. 3 (1997): 387-410.
34. William, Baum M. "Matching, undermatching, and overmatching in studies of choice." *Journal of the Experimental analysis of Behavior* 32, no. 2 (1979): 269-281.