



Indian Technical Institutions Comparative Evaluation of Distance Based Using WSM Method

* Bhaludra R Nadh Singh

AVN Institute of Engineering and Technology, Hyderabad, Telangana, India.

*Corresponding author Email: brn.singh@gmail.com

Abstract. Indian Institutes of Technology (IITs) are Located all over India Publicly owned by Central Govt Technology companies. Indian technology companies are used Performance Appraisal Here to solve the problem of WSM.

Weighted Sum works by multiplying the designated field values Indian Technical Institution or appraising the alternatives Analysis in Faculty strength (FS), Student intake (SI), Number of Ph.D awarded (Ph.D), Number of patents applied for (Patent), Campus area (CA) Evaluation parameters in Computational time, Simplicity, Mathematical calculations involved, Flexibility. Student intake (SI) is got the first rank whereas is the Faculty strength (FS) is having the Lowest rank. In this paper Indian Technical Institution of WSM Student intake (SI) is got the first rank whereas is the Faculty strength (FS) is having the Lowest rank

Keywords: MCDM, Faculty strength (FS), Student intake (SI), Number of Ph.D awarded (Ph.D), Number of patents applied for (Patent), Campus area (CA).

1. Introduction

A technical institute, sometimes the Institute of Called Institute of Technology or Polytechnic Called, it is in research and professional practice A school that provides focused education. A Students taking courses in a technical institute Based on practical applications with and on-the-job training Prepare for inclusive careers. Indian Institutes Technology (IITs) are India Centrally owned throughout are public technology companies. They are Indian Ministry of Education Govt are under ownership. India per annum as of 2021 2500 Engineering Colleges in India, 1400 Polytechnics and 200 planning and in technical education infrastructure Fifteen lakh engineering Produces graduates. There are schools of architecture. As he reflects the motto of national life Chose the call letters "WSM": 'We Let's save millions'. WSM Officially broadcast on October 5, 1925 started It will be The Grand Ole Opry A month after the show Aired for the first time. To find the weighted average, each number Multiply by its weight and then calculate the results add If the weights do not coincide Sum of all variables and their Multiply by weight, of weights Divide by the sum.

2. Indian Technical Institution

Although WSM can Expertise by perception or preference Dealing with knowledge and experiences Human thinking with crisp numbers Cannot be completely replicated. Therefore, technology companies integrate with the environment [1]. Indian technology elite who Performed a major function in the Establishing computer training in India and Indian IT Growth of the quarter. This Elite, aligned technologically in preference to Politically, the upper class of India interests (and probably its own) Technical and with US that have been serviced by monetary relations is believed. It's American Agencies, American education engine, and contacts Created society (from time to time) the American authorities. This elite alignment was robust enough to withstand the maximum extreme lines on formal Indo-US relations. However, these interactions had unintended and high-priced results for India college student's American education in India Methodology in American Education Transparent to the device Used as a path. to the massive technical organisation of America, the Indian technology companies were posted recently: Indian technology companies A walk through [2]. The Indian technical training device machine within the use of a may be divided into 3 classes namely Central Government sponsored establishments, financing establishments [3]. The Indian education system has an illustrious past. A great Chinese Buddhist monk by Hsuyan-Tsang Nalanda University visited India's oldest higher education One of the centres. On today's day and date telephone, Fax Internet etc of such company without assistance How fame spread That's amazing. Indian Institutes of Technology (Patents), Premises A select few like Considering the criteria takes in rupees (TF). We select these evaluation criteria by consulting with experts from Various with the help of some questionnaires fields and improved nominal by conducting group technique session Integrating their ideas. of the analytic hierarchy process [4]. Although people of age do, work Skills and abilities to perform are in short supply has Growing in A rapidly expanding economy It provides the right education to meet it coming demand by making the available manpower suitable for employment Change is the biggest challenge facing the country today. One of the methods. Liberalization, Privatization And because of globalization, the developing economy for quality technical education to meet the challenges Demand is increasing rapidly. In this context, technology companies in India Performance evaluation as a research problem has changed. This paper consists of seven exercises of leading Indian technology companies The assessment focuses on several criteria context [5]. The first name Institute in India App technology is group of institutes known as Indian Institutes Technology (IIT). Based on several criteria This is Seven Indian Technical Education at Institutes (IITs) Carrying out and learning and dissemination of knowledge

Further development is [6]. To examine various aspects of this area, the Indian education system, a top South Indian University International Student mentoring program researcher Identified. It Technology, Management and related A public offering higher education in science University. University of International Affairs The centre has established and various international Collaborations, exchange programs and other countries International through inquiries from working Indians Admits students to university. International Affairs Centre through its office It has instituted a mentoring program for students This is a variety of international students are allowed Faculty members working in departments are advisors. International students flock to from various developed countries Indian Universities. They do not have equal facilities like education and accommodation here. Toilet maintenance (female, audio recording denied) Issues related to basic facilities like Students sometimes reported [7]. Tech companies You can benefit from it. Also, this Quality improvement efforts using sampling Ensures high performance as a result of creating Skilled human resource Quality standards for development and places. This model depends on many factors. These factors can help organizations deliver Based on quality graduates Good results if taken care of early. this Drivers and their inspection are important interrelationship, thereby identifying which drivers drive, that is, influence others and which drivers are driven, that is, influenced by others. A descriptive structural modelling (ISM) approach was proposed to develop a model based on these factors [8]. Technical and Research Institutes. Their take a look at does no longer recollect the contributions of significant and State Universities, Indian School and College Designing the full size part of the gadget. Nayak, filed from the most favourable technology, of patents issued and maintained Conducted primary data analysis educational establishments which include Indian technology companies (IIT). Kakotkar Committee Report offered to the IIT in 2011 by the file is now that Today's research release of companies Not indicated (using IIT Madras (except to mention the royalties earned) Research based on more patents We present a comparative analysis of the output [9]. Technical establishments specially directors, chancellors and deans, college and workforce recruitment and infrastructure improvement, addressing stakeholder needs, enforcing strategic choices and imposing structural changes, putting overall performance dreams, standards and approaches, coordinating organizational methods and tracking workforce teaching, studies, schooling and Compliance with policies and policies past outreach packages. However, most theories of management One or different characteristics (ethical leadership, servant leadership, autocracy democratic vs. effective vs. people-oriented etc.) present truth. They region much less importance on the occasions wherein the leader operates. Furthermore, for the reason that cognitive, character or motivational attributes are observed to provide an explanation for 30–50% of leaders' effectiveness, an extra complete method is essential to include context-related Political, cultural, technological and financial-aggregate Performance requirements to make leaders extra effective. Addressing organizational realities and characteristics of leaders and to individual characteristics Moving beyond [10]. There are 2942-degree level engineering institutes in Indian Technical Education in India recognized by AICTE and covering around 10 lakh students. The influx of unemployed engineers is believed to be high. According to a study by NASSCOM, Full Graduate About 25% of engineers Everyone passes 12 months are employed by way of MNCs and the relaxation of those have to undergo a few shape of schooling to conquer their skill scarcity. Some NITs have begun completing faculties to reduce the skill three to six months finishing touch colleges in precise areas together with computer embedded SAP, advanced computing VLSI design, embedded device and many others. For self-financed engineering university students. Employ those students [11]. Indian Institute of Technology a Nationwide Elite company It is the oldest company of generation in India. 1,300,000 college students throughout India appear for this examination and most effective 2% make it. All over India Students coming from Like Europe a quick long distance trip will make you a Takes you to an exceptional country an exceptional language and tradition. When spoken, they are communicate troubles amongst college students from a few components of the use of a, mainly within the south, in which Regional languages dominate. This Oral exchange of students from regions and troubleshooting issues facing Assured to get into IIT action defence is with India machine [12]. Companies jogging sub-standard schemes have been criticizing the authorization for higher education and research National Commission (NCHER) Bill faces competition from the ones concerned with kingdom autonomy and unfounded fears of an unmarried significant authority. The competition to the Foreign Education Bill is in part based totally on political and ideological considerations and partially on the basis of the establishments that currently run bogus foreign places programs [13].

3. Weighted Sum Method

A selection theory Weighted sum sampling method WSM is very The well-known MCDM (multi-criteria decision-making) is one of the techniques and primarily some Alternatives based on criteria Easier to evaluate is one. WSM is valid handiest while all information supplied are in the same size or unit [14]. The in each column Rows are compressed, using their respective rank sums Columns are sorted If the rank sum is reduced The column molecule is searched Same as reference form will be Others mixtures of rating matrix except summation have been studied. This approach is relevant to tuning parameter choice and different regions in which Subgroup variables of variables must be selected from the set This is when the SRD method is monitored The approach can be considered unsupervised (A goal vector is used) In addition to the SRD approach Can be used in molecular fitting research [15]. Factor weights for robot selection and are A weighted sum model with This model has no institution consensus on those values. In choosing robots, the best and weights and subjectivity Less expert on components Values are removed. The main purpose for getting rid of These values are any capacity at the last stage It is to reduce the impact of distorted desire to explain version and program A numerical example is presented the ranking change while in comparison to a version that does not do away with those excessive values [16]. Using weighted-sum beamforming, the microphone arrangement, which includes the variety and function of the microphones, determines the weight for every microphone signal. To determine the design parameters, diverse simulations had been finished if the listener had a head. To make amends for the and the impact is accounted for using the round head-related transfer function (HRTF). We perform simulations

with respect to a round head version [17]. The Weighted Sum Model (GWSM) accounts for multi-year uncertainties with the aid of comparing the enterprise environment in West Africa. The deal with a first-rate problem now not blanketed through DBP, specifically, ranking countries throughout years by considering inside-country uncertainty and investor possibilities as criterion weights. Second, we enlarge the traditional weighted sum model [18]. of weights containing pure gas The sum equals A common way to use calculate the entire emissions by means of making a grey approximation to resolve the spectrally included RTE. An alternative method Non-gray or bar formula [19]. To decide the depth of penetration, the sum rule need to be cautiously applied. Our effects display that Normal and superconducting to move the c-axis between positions A within energy There is trade, for a speed-dependent gap; This exchange in kinetic energy ought to be taken under consideration to properly derive the penetration intensity from conductance sum regulation Naïve use of conductivity sum [20]. Important (1) part Determination of sum rule closely related the greater trendy trouble of improving the feature Out of test range is widely recognized the evaluation (holomorphic) of a complicated feature $\sigma(\omega)$ on a given area D can be persevered analytically over the complete domain inclusive of the last boundary from a subset of the boundary of this area [21]. The weight trouble must be solved first. Furthermore, modelling the dynamic shape factor studied with the aid of MNS is extra tricky considering that discrete Sum laws of theoretical models are satisfying. In fact, any theory Notification of serious settlement dynamic structure issue measured in absolute devices should provide an explanation for how the regulation of composition is happy or why it is violated [22]. All like the weight of white fuel a0 The sum of the weights zero = zero; Therefore, ϵt , calculated by the SNB version, is the sum of the differences among L and by the WSGG version of SQP Extraordinary path with help Calculated for length set of rules [23]. Weighted sum rules for exchange forces A very sensitive test Fourier components optimization measures, Roughly speaking, it proved. transfer potential of the two-particle interaction density [24]. Sum (SNNMS) reduces the number of LDPC decoding network Correction factors. A single revision in a single layer by dividing the factors Through the SNNMS LDPC decoding network Good performance can be achieved a small increase in computational complexity [25]. The weighted sum model does not require any supported solutions to be pruned with this optional correlation. To the best of our understanding, the priority relation is only implemented to given answers and non-stop multi-objective optimization troubles [26].

4. Analysis and Discussion

TABLE 1. Indian Technical Institution

	Computational time	Simplicity	Mathematical calculations involved	Flexibility
Faculty strength (FS)	31.080	139.530	29.150	35.600
Student intake (SI)	53.060	142.970	33.690	30.050
Number of Ph.D awarded (Ph.D)	38.350	122.580	29.180	23.100
Number of patents applied for (Patent)	44.360	128.280	24.600	38.050
Campus area (CA)	33.330	158.360	27.960	28.060

Table 1 shows the Indian Technical Institution using the Analysis method in WSM Computational time, Simplicity, Mathematical calculations involved, Flexibility Faculty strength (FS), Student intake (SI), Number of Ph.D awarded (Ph.D), Number of patents applied for (Patent), Campus area (CA) it is also data set of in the Value.

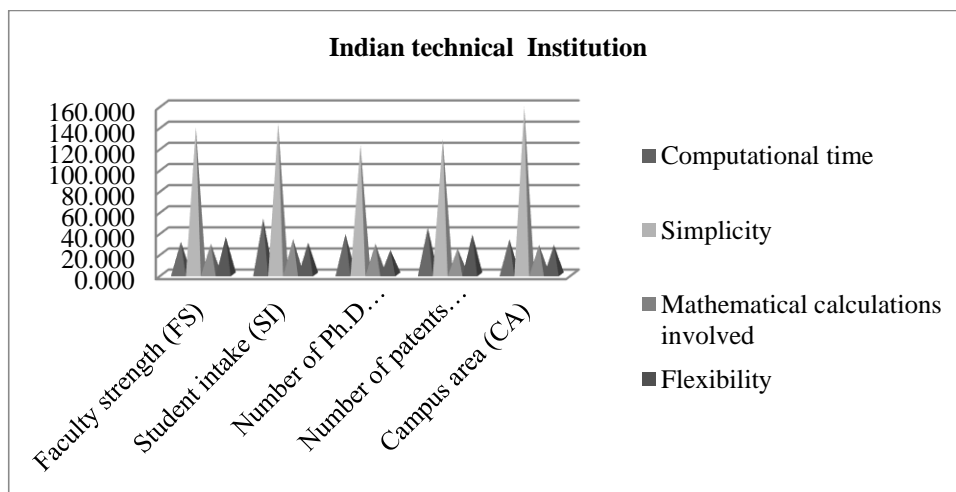


FIGURE 1. Indian Technical Institution

Figure 1 shows the Indian Technical Institution using the Analysis method in WSM. Computational time, Simplicity, Mathematical calculations involved, Flexibility it is seen that Student intake (SI) is showing the Highest Value for Computational time and Campus area (CA) is showing the lowest value. Campus area is showing the Highest Value for Simplicity and Number of Ph.D awarded (Ph.D) is showing the Lower value. Student intake (SI) is showing the Highest Value for Mathematical calculations involved and Number of patents applied for (Patent) is showing the lowest value. Faculty strength (FS) is showing the Highest Value for Flexibility and Number of patents applied for (Patent) is showing the lowest value.

TABLE 2. Normalized Data

Normalized Data			
0.58575	0.88109	0.84391	0.64888
1.00000	0.90282	0.73019	0.76872
0.72277	0.77406	0.84304	1.00000
0.83603	0.81005	1.00000	0.60710
0.62816	1.00000	0.87983	0.82324

Table 2 shows the Normalized data for Indian Technical Institution. Computational time, Simplicity, Mathematical calculations involved, Flexibility Faculty strength (FS), Student intake (SI), Number of Ph.D awarded (Ph.D), Number of patents applied for (Patent), Campus area (CA) it is also the Maximum in Normalized value.

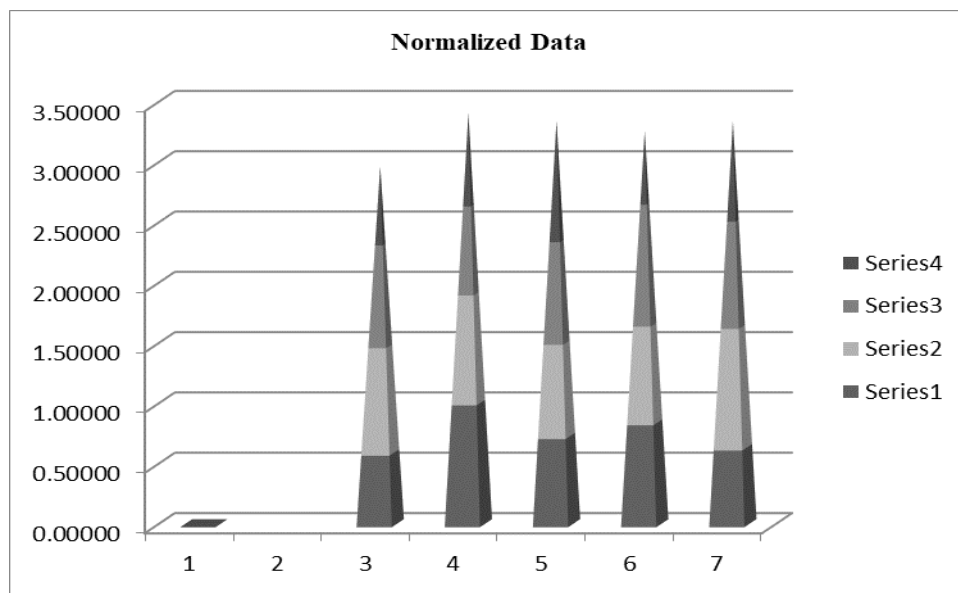


FIGURE 2. Normalized data

Table 2 shows the Normalized data for Indian Technical Institution. Computational time, Simplicity, Mathematical calculations involved, Flexibility Faculty strength (FS), Student intake (SI), Number of Ph.D awarded (Ph.D), Number of patents applied for (Patent), Campus area (CA) it is also the Maximum in Normalized value.

TABLE 3. Weightages

Weightages			
0.25	0.25	0.25	0.25
0.25	0.25	0.25	0.25
0.25	0.25	0.25	0.25
0.25	0.25	0.25	0.25
0.25	0.25	0.25	0.25

Table 3 shows Weightages used for the analysis. We taken same weights for all the parameters for the analysis

TABLE 4. Weighted normalized decision matrix

Weighted normalized decision matrix			
0.14644	0.22027	0.21098	0.16222
0.25000	0.22570	0.18255	0.19218
0.18069	0.19351	0.21076	0.25000
0.20901	0.20251	0.25000	0.15177
0.15704	0.25000	0.21996	0.20581

Table 4 shows the weighted normalized decision matrix for Computational time, Simplicity, Mathematical calculations involved, Flexibility Faculty strength (FS), Student intake (SI), Number of Ph.D awarded (Ph.D), Number of patents applied for (Patent), Campus area (CA) is also Multiple value.

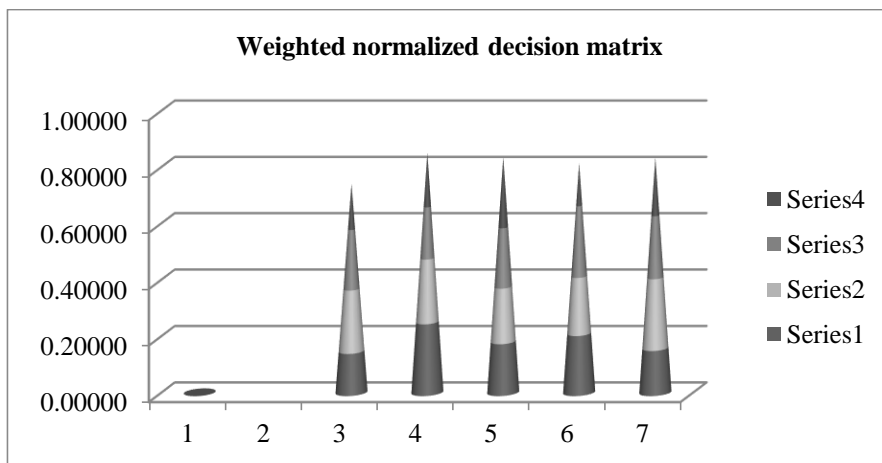


FIGURE 3. Weighted Normalized Decision matrix

Figure 3 shows the weighted normalized decision matrix for Computational time, Simplicity, Mathematical calculations involved, Flexibility Faculty strength (FS), Student intake (SI), Number of Ph.D awarded (Ph.D), Number of patents applied for (Patent), Campus area (CA) is also Multiple value.

TABLE 5. Final Result of Indian Technical Institution

	Preference Score	Rank
Faculty strength (FS)	0.73991	5
Student intake (SI)	0.85043	1
Number of Ph.D awarded (Ph.D)	0.83497	2
Number of patents applied for (Patent)	0.81330	4
Campus area (CA)	0.83281	3

Table 5 shows the final result of WSM for Indian Technical Institution. Preference Score is calculated using the Student intake (SI) is having is Higher Value and Faculty strength (FS) is having Lower value.

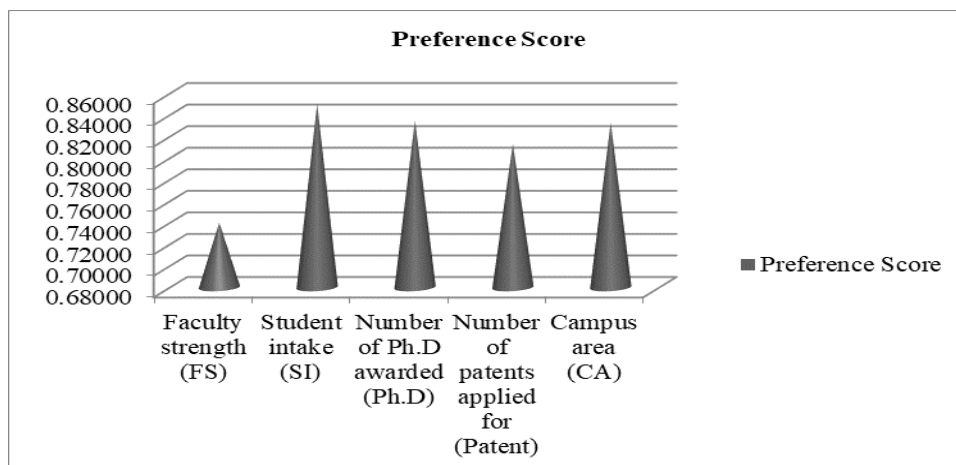


FIGURE 4. Preference Score

Figure 4 shows the preference Score for Student intake (SI) is showing the highest value for preference score and Faculty strength (FS) is showing the lowest value.

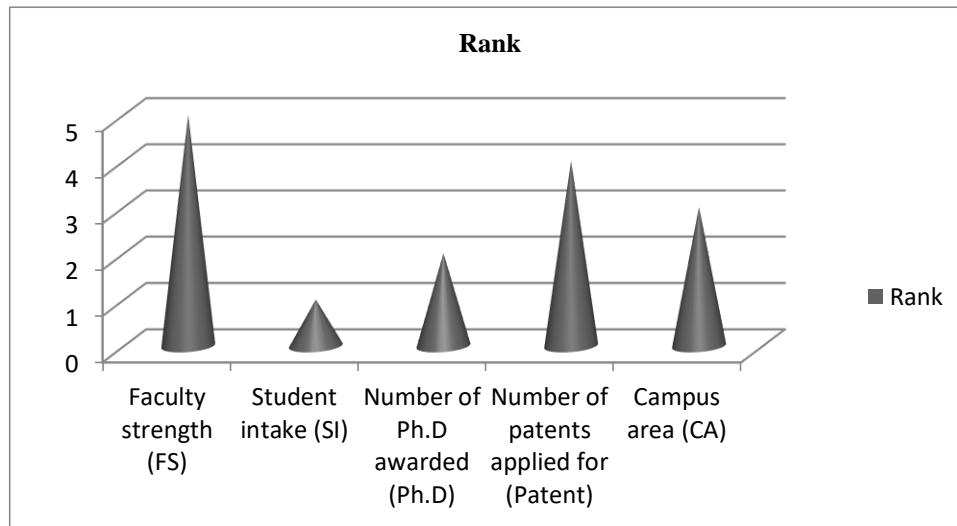


FIGURE 5. Shows the Rank

Figure 5 Shows the Ranking of Autonomous Maintenance System. Student intake (SI) is got the first rank whereas is the Faculty strength (FS) is having the Lowest rank

5. Conclusion

Though the WSM could be Comment on the expert's understanding and statements Or at least dealing with it by choice Capable, yet human The idea is complete with crisp numbers Cannot reflect. So, it integrates into establishments Weighted in selection principle Sum Sampling Method, WSM is very Recognized MCDM (Multi Criteria decision-making) is one of the techniques and some more Options based on criteria One of the best to evaluate. All records provided are equal When in measure or unit Only WSM is valid Ranks in each column columns for their respective rank sums are sorted. Low rank amount, For the column molecular searched reference structure Very similar. Apart from summation Others of the ranking matrix Additions were examined. Weighted Sum works by multiplying the designated field values Indian Technical Institution or appraising the alternatives Analysis in Faculty strength (FS), Student intake (SI), Number of Ph.D awarded (Ph.D), Number of patents applied for (Patent), Campus area (CA) Evaluation parameters in Computational time, Simplicity, Mathematical calculations involved, Flexibility. Student intake (SI) is got the first rank whereas is the Faculty strength (FS) is having the Lowest rank

Reference

- [1]. Das, Manik Chandra, Bijan Sarkar, and Siddhartha Ray. "A framework to measure relative performance of Indian technical institutions using integrated fuzzy AHP and COPRAS methodology." *Socio-Economic Planning Sciences* 46, no. 3 (2012): 230-241.
- [2]. Bassett, Ross. "Aligning India in the Cold War era: Indian technical elites, the Indian Institute of Technology at Kanpur, and computing in India and the United States." *Technology and Culture* 50, no. 4 (2009): 783-810.
- [3]. Das, M., Bijan Sarkar, and Siddhartha Ray. "A decision support framework for performance evaluation of Indian technical institutions." *Decision Science Letters* 2, no. 4 (2013): 257-274.
- [4]. Das, Manik Chandra, Bijan Sarkar, and Siddhartha Ray. "Comparative evaluation of Indian technical institutions using distance based approach method." *Benchmarking: An International Journal* 20, no. 5 (2013): 568-587.
- [5]. Das, Manik Chandra, Bijan Sarkar, and Siddhartha Ray. "Comparative evaluation of Indian technical institutions using fuzzy AHP and MOORA." *International Journal of Multicriteria Decision Making* 2, no. 1 (2012): 74-93.
- [6]. Das, Manik Chandra, Bijan Sarkar, and Siddhartha Ray. "On the performance of Indian technical institutions: a combined SOWIA-MOORA approach." *Opsearch* 50, no. 3 (2013): 319-333.
- [7]. Karky, Nandini. "International students in an Indian technical university: Faculty counselors' preparedness and perspectives." *Journal of Studies in International Education* 17, no. 1 (2013): 39-54.
- [8]. Gambhir, Victor, N. C. Wadhwa, and Sandeep Grover. "Interpretive structural modelling of enablers of quality technical education: an Indian perspective." *International Journal of Productivity and Quality Management* 12, no. 4 (2013): 393-409.

- [9]. Sharma, Ruchi, and Akriti Jain. "Research and patenting in Indian universities and technical institutes: An exploratory study." *World Patent Information* 38 (2014): 62-66.
- [10]. Gochhayat, Jyotiranjana, Vijai N. Giri, and Damodar Suar. "Multilevel leadership and organizational effectiveness in Indian technical education: the mediating role of communication, power and culture." *International Journal of Leadership in Education* 20, no. 4 (2017): 491-505.
- [11]. Banad, Mahadevi S., and Mahadev Talawar. "Impact of Globalization on Indian Technical Education System." *New Knowledge in a New Era of Globalization* (2011): 73-96.
- [12]. Das, Rajasee, and Sangeeta Das Bhattacharya. "College Psychotherapy at an Indian Technical Education University's Student Counseling Center." *Journal of College Student Psychotherapy* 29, no. 2 (2015): 90-93.
- [13]. Singh, Kuldeep, Shival Srivastava, Abhishek Bhardwaj, Abhinav Dixit, and Sanjeev Misra. "Medical education during the COVID-19 pandemic: a single institution experience." *Indian pediatrics* 57, no. 7 (2020): 678-679.
- [14]. Naufal, Ammar, Amelia Kurniawati, and Muhammad Azani Hasibuan. "Decision support system of SMB telkom university roadshow location prioritization with weighted sum model method." In *2016 2nd International Conference of Industrial, Mechanical, Electrical, and Chemical Engineering (ICIMECE)*, pp. 107-111. IEEE, 2016.
- [15]. Kalivas, John H., Károly Héberger, and Erik Andries. "Sum of ranking differences (SRD) to ensemble multivariate calibration model merits for tuning parameter selection and comparing calibration methods." *Analytica chimica acta* 869 (2015): 21-33.
- [16]. Goh, Chon-Huat, Yung-Chin Alex Tung, and Chun-Hung Cheng. "A revised weighted sum decision model for robot selection." *Computers & Industrial Engineering* 30, no. 2 (1996): 193-199.
- [17]. Jeong, Jihyeon, and Youngjin Park. "Arrangement of array microphones for hearing-aids based on delay-weight-sum beamforming methods." In *2014 14th International Conference on Control, Automation and Systems (ICCAS 2014)*, pp. 1540-1542. IEEE, 2014.
- [18]. Esangbedo, Moses Olabhele, and Ada Che. "Grey weighted sum model for evaluating business environment in West Africa." *Mathematical Problems in Engineering* 2016 (2016).
- [19]. Johansson, Robert, Bo Leckner, Klas Andersson, and Filip Johnsson. "Account for variations in the H₂O to CO₂ molar ratio when modelling gaseous radiative heat transfer with the weighted-sum-of-grey-gases model." *Combustion and Flame* 158, no. 5 (2011): 893-901.
- [20]. Kim, Eugene H. "Penetration depth and the conductivity sum rule for a model with incoherent c-axis coupling." *Physical Review B* 58, no. 5 (1998): 2452.
- [21]. Kuzmenko, A. B., Dirk Van Der Marel, Fabrizio Carbone, and Frank Marsiglio. "Model-independent sum rule analysis based on limited-range spectral data." *New Journal of Physics* 9, no. 7 (2007): 229.
- [22]. Lorenzana, J., G. Seibold, and R. Coldea. "Sum rules and missing spectral weight in magnetic neutron scattering in the cuprates." *Physical Review B* 72, no. 22 (2005): 224511.
- [23]. Shan, Shiquan, Zhijun Zhou, Liping Chen, Zhihua Wang, and Kefa Cen. "New weighted-sum-of-gray-gases model for typical pressurized oxy-fuel conditions." *International Journal of Energy Research* 41, no. 15 (2017): 2576-2595.
- [24]. Tornow, V., G. Orlandini, M. Traini, D. Drechsel, and H. Arenhövel. "A study of electronuclear sum rules in light and medium-weight nuclei." *Nuclear Physics A* 348, no. 2-3 (1980): 157-178.
- [25]. Wang, Qing, Shunfu Wang, Haoyu Fang, Leian Chen, Luyong Chen, and Yuzhang Guo. "A model-driven deep learning method for normalized min-sum LDPC decoding." In *2020 IEEE International Conference on Communications Workshops (ICC Workshops)*, pp. 1-6. IEEE, 2020.
- [26]. Kaddani, Sami, Daniel Vanderpooten, Jean-Michel Vanpeperstraete, and Hassene Aissi. "Weighted sum model with partial preference information: Application to multi-objective optimization." *European Journal of Operational Research* 260, no. 2 (2017): 665-679.