

# Understanding of E-Learning Programs using WPM MCDM Method

\*<sup>1</sup>Krishna Kumar TP, <sup>2</sup>M. Ramachandran, <sup>2</sup>Chandrasekar Raja, <sup>2</sup>Ashwini Murugan

<sup>1</sup>Nehru School of Management @ NCERC, Pamapady, Thiruvilwamala, Thrissur, Keral, India.

<sup>2</sup>REST Labs, Kaveripattinam, Krishnagiri, Tamil Nadu, India

\*Corresponding author Email: [tpk683@gmail.com](mailto:tpk683@gmail.com)

**Abstract.** The Evolution of the Internet All Industry has affected business operations and the development of e-learning has accelerated. Cost of designer courses and learners, Wu, due to time or flexibility, e-learning is an alternative training method by corporations Accepted. E-learning ability assessment is important, and assessment criteria vary. E-learning ability assessment A great deal of relation Attempt has been made; however, a Common size estimate of the model is subjective to simultaneous criteria to the ambiguity of feeling Considers the relationship between. This paper proposed a new novel hybrid that Refers to MCDM-type independent relationships. Longevity, I.e. for 100 years on a much larger scale for bridges fixed traffic Current progress towards needs. To achieve this goal, Long duration of bridge performance Realistic predictions In Bridge Engineering play an important role. In this study, turbulent traffic, Great pressure to carry flows of concrete bridges Long-term deviation, and Dissociation-induced Damage development are being explored. Concrete viscoelastic Behavior and concrete Tensile cracks and plastic softeners taking into account the combined effects Taken, the performance of the bridge an integrated system for evaluating the model has been developed. (WPM-Weighted Product Method).In this method from analysis Colors of WebPages are the first rank, Connection of WebPages is the fifth rank.

## 1. Introduction

Construction, maintenance, and cost Due to the benefits of many sections of pressure concrete bridges are formed as partners in Transportation around the world Networks are widespread Designed, and incorporated. For these important links in transport systems, bridges Safety, and serviceability throughout their lives Maintenance is of great social, economic, and environmental importance Powerful. This article runs simultaneously on the Internet, interconnected Runs up to the last mile of connected and wireless infrastructure networks Provides insights into the performance of applications. Upgrading previously developed tools, IEEE 802.11g WLAN Tests on the network Wireless connection layer, network layer, and traffic layer, and measure performance across the application layer. Using LEFT so far for Hadron's physics we have drawn a picture of Rosie. However, not everything is right, which is the current Reason for the investigation. Since the 1980s, covariate fertilization theory, like the computational observations on the structure of the LEFT using methods of disturbance theory is considered to be invariant. In some cases, LFD has this feature many authors have shown that, and a few years ago some general statements for a similar effect are found in quantum field theory the current matrix is the calculation of the element. Blood usually clots when exposed to foreign interfaces such as traumatic native tissue or artificial implantation. This phenomenon is the result of a complex series of actions involving the interface and the flow-mediated transport of blood proteins. The exact role of these contributing factors is often subject to conflicting speculations. The field of neonatal neurology, especially its focus on the preterm infant, had its beginnings in neurological studies. This led to our understanding of the pathology and nature of neonatal brain injury. Newborn brain injury can have serious and different effects on subsequent brain development; this study is more than just simple tissue loss to diagnose having neurological effects and promotes the notion that it may be important. The brain injury of a premature baby is the best explanation for this notion.

## 2. E-Learning

Meaningful cross-examination for research Researchers when making comparisons facing difficulties is unusual Not at all. With various characteristics Because of the different contexts, Research related to the field of distance learning will be even harder to use. Research articles on how to define a learning environment we implemented mixed-method analysis to find out In addition, we have 43 people Inspected and different types of delivery of random terms for patterns we found the application. Distance learning E-learning and online learning; The learning environment the results reveal the presence of emotions. One of the key factors in education is learning. Let's be in education. We teach learners. Students learn their own Far from the instructors, therefore their Difficulties such as regular mental and physical readiness Besides, have different kinds of difficulties And there are barriers, they are for learning May quench their curiosity. Courses, Seminars, Workshops, Online learning websites, Chat Sessions / Discussion Groups, And e-learning products that include The process of designing and improving, Personnel resources, hardware, and Personnel resources, hardware and Careful consideration of software specifications and applications, standards Including a mix. Producing e-learning products Developers usually produce

standard Tables and for design and production over time Dedicated resources are well-defined. Companies that are considering developing their products, Production of e-learning and these resources for sorting should be considered necessary. Designing the curriculum Place to deliver, about learners the developer must be familiar with the process. They are the characteristics of their learners, they Must be aware of development tasks and age. Learning is one of the most important factors in education and it should be clearly and thoroughly known.

### 3. Weighted Product Model

This will collect the sensor nodes to the base station for sending the process and data go. These sensor nodes are environmental data. Collecting this data is stored in other intermediate Data packets that are sent to the target via nodes where retrieved data will be sent from the source to the base station. Multi-hop will be shipped. In the case of multi-hop, many of the network Routing parameters and sensor terminals Limited resources Due to this to realize not so easy various controls power of WSNs Optimization problems arise in designing efficient routing algorithms. Two in this chapter are Simple multi-scale Results methods, weighted sum method and weight product let’s look at the method. Amount weighed in the system, a transfer the value of the value is its value for the sum of the values be equal to, each of the weights there Are the main weights associated with the attribute. Performance scores, in weighted production system Characterization of performance scores, Support amplifying importance to calculate scores instead emphasize the power of weight. To measure accuracy Decision making using WP and Tops algorithms an application system that supports this has been created. Thirty student data was calculated according to their ranking. Two predicting accurate rankings were obtained two methods of accuracy and low error ratios. Perfect for each method to find the scale, a specific section of the company created a ranking of trainees who received an internship program. From these barriers, in Bali Digital library services at computer colleges it was necessary to evaluate, thus Developing recommendations for service improvements. In principle, the evaluator is a specific product/project/service / Absolute about the policy under review, and collecting accurate information from an appraiser, is the process of analysis. So, decision-making can be used as a recommendation. Evaluation is Information about the specific object collecting, analyzed, and distributed. Computer learning control Provides appropriate functionality.

TABLE 1. E-Learning Using Weighted Product Model

	Between people	Within people	Between measures	Residual
Path of WebPages	87.08	79.53	29.15	22.05
Under constructing Webpage	92.12	94.97	23.69	27.30
Connection of WebPages	74.08	82.58	29.18	23.10
Display of WebPages	83.17	78.28	24.60	17.59
Colours of WebPages	93.33	86.41	27.96	18.89

Table 1. Shows that the Intertwined Effect in Colors of web pages is the highest value and the connection of WebPages is the lowest value between people. Under constricting webpage is the highest value and the Display web page is the lowest value for within people. Connection of WebPages is the highest value and under constructing WebPages is the lowest value for between measures. Under Construction web page is the highest value and the display of web pages is the lowest value for Residual.

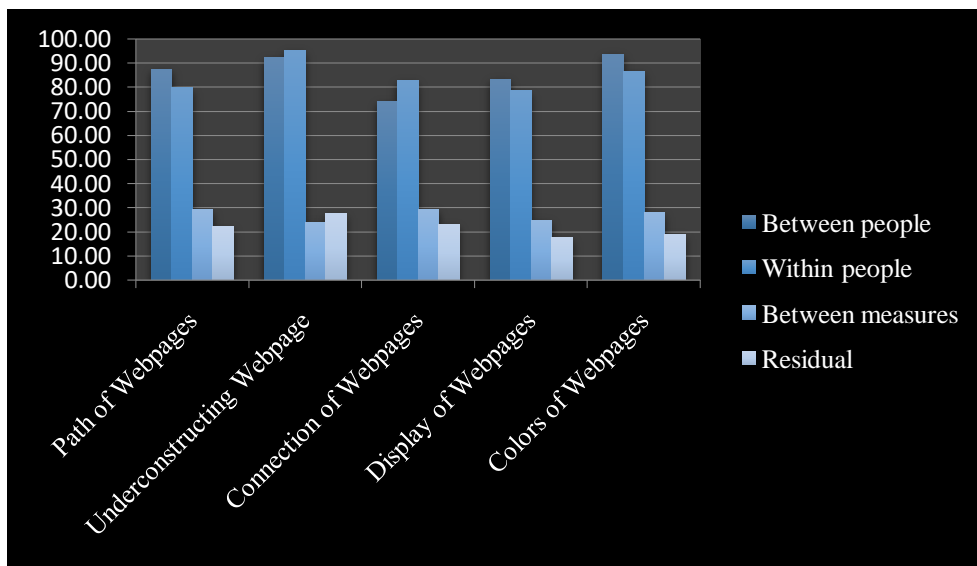


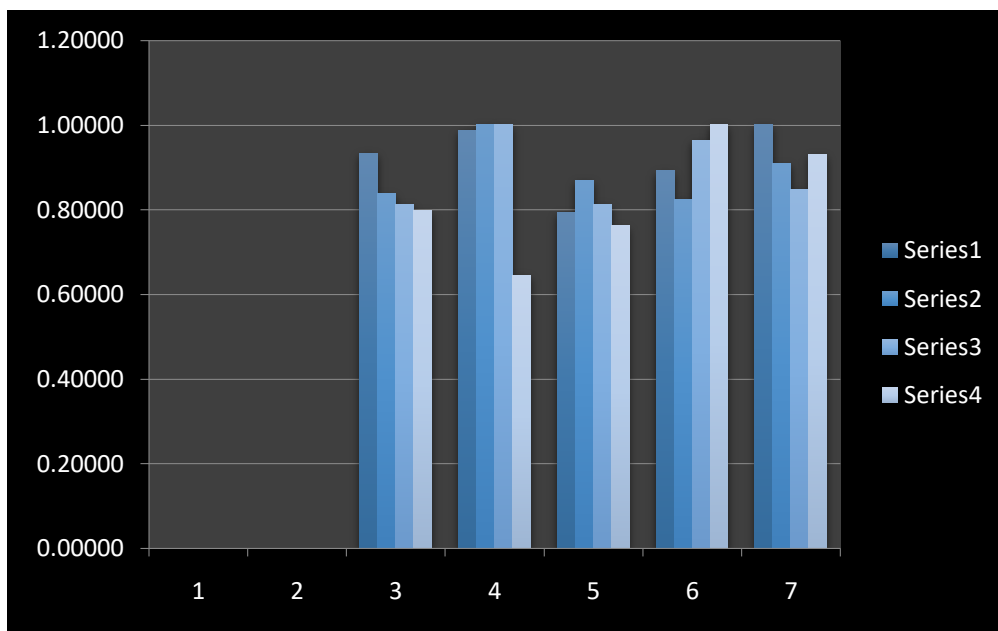
FIGURE 1. E-Learning Using Weighted Product Model

Figure 1. Shows that Intertwined affect for Path of WebPages, under construction Web page, Connection of WebPages, Display of Web Pages, Colors of WebPages.

**TABLE 2.** E-Learning Performance value

	Between people	Within people	Between measures	Residual
Path of WebPages	0.93303	0.83742	0.81269	0.79773
Under constructing Webpage	0.98704	1.00000	1.00000	0.64432
Connection of WebPages	0.79374	0.86954	0.81186	0.76147
Display of WebPages	0.89114	0.82426	0.96301	1.00000
Colours of WebPages	1.00000	0.90987	0.84728	0.93118

Table 2. The web effect of web pages shows that the performance value for the colors is the higher value and the link value is the lower value in the performance value. The higher the value under web page creation and the lower the value of the visual performance value of web pages. Creating a web page is a high value and a low value of the link performance value of web pages. The higher the value of the display of web pages and the lower the value of the performance value under construction.



**FIGURE 2.** E-Learning Performance value

Figure 2. Series 1 is between people, series 2 is between people, series 3 is between measurements, and series 4 is the remainder.

**TABLE 4.** E-Learning Weighted normalized decision matrix

	Between people	Within people	Between measures	Residual
Path of WebPages	0.982821	0.9566	0.9495	0.9451
Under constructing Webpage	0.996743	1	1	0.8959
Connection of WebPages	0.943887	0.9657	0.9492	0.9341
Display of WebPages	0.971597	0.9528	0.9906	1
Colours of WebPages	1	0.9767	0.9594	0.9823

Figure4. Weighted normalized decision matrix on Intertwined Effect is Intertwined effect for Path of WebPages, under constructing Webpage, Connection of WebPages, Display of WebPages, and Colors of WebPages.

**TABLE 5.** Rank of E-Learning

	Preference Score	Rank
Path of WebPages	0.843638	4
Under constructing Webpage	0.893015	3
Connection of WebPages	0.808212	5
Display of WebPages	0.917086	2
Colours of WebPages	0.92047	1

Table 5. Shows that Intertwined Effect on Rank. Colors of WebPages are the first rank. Display of WebPages is the second rank. Under construction Webpage is the third rank. Path of WebPages is the fourth rank. Connection of WebPages is the fifth rank.

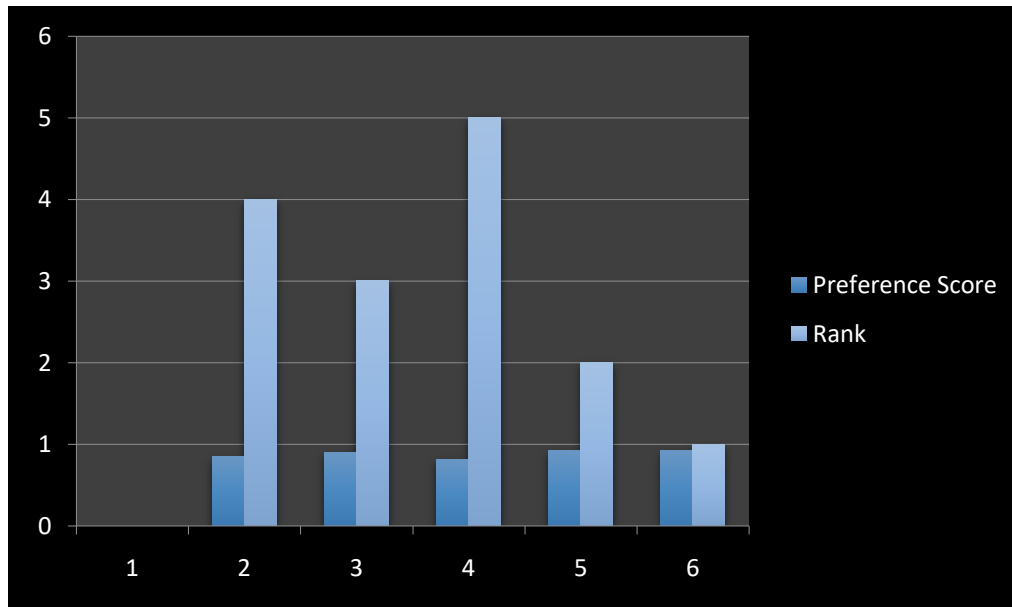
**FIGURE 3.** Rank E-Learning

Figure 3. Intertwined Effect on rank. Colors of WebPages are the highest value. Connection of WebPages is the lowest rank.

#### 4. Conclusion

At the land and field level, Natural habitats for pollinators in Wild pollination visits the locations were favorable for wild pollination visits and almond production. Almond pollen Addition and production Their impact on consistency and almond quality Additions of local and landscape properties in Additional studies are needed to analyze the effects., Nature for almond trees Improving wild pollination as a resource, sustainable Increasing productivity, around the fields Maintenance of natural habitats and Local flowering within the fields Continuous as protecting communities This study promotes management strategies. In the end, extra to confirm the annual nature of the lamination Samples required, However gypsum and aragonite layers in summer it is clear that have evolved. Many of the exceptions appear to be the simple regular dark Light replacement, perhaps the Laminate is defective and doubles in a few years To apply the laminate directly to install the deadline Various pieces of research will be required including current observations. Candidates using weighted production method Based on the results of selective research, The value of the interest rate Criteria using And alternative data based on weight criteria We can conclude that the computer performs the calculation process.

#### Reference

- [1]. Tzeng, Gwo-Hshiang, Cheng-Hsin Chiang, and Chung-Wei Li. "Evaluating intertwined effects in e-learning programs: A novel hybrid MCDM model based on factor analysis and DEMATEL." *Expert systems with Applications* 32, no. 4 (2007): 1028-1044.
- [2]. Nakada, H., and K. Takayama. "Intertwined effects of pairing and deformation on neutron halos in magnesium isotopes." *Physical Review C* 98, no. 1 (2018): 011301.

- [3]. Tong, Teng, Zhao Liu, Jie Zhang, and Qiang Yu. "Long-term performance of prestressed concrete bridges under the intertwined effects of concrete damage, static creep and traffic-induced cyclic creep." *Engineering Structures* 127 (2016): 510-524.
- [4]. Alomar, David, Miguel A. González-Estévez, Anna Traveset, and AmparoLázaro. "The intertwined effects of natural vegetation, local flower community, and pollinator diversity on the production of almond trees." *Agriculture, Ecosystems & Environment* 264 (2018): 34-43.
- [5]. Subaveerapandiyan, A. "A Study of Teacher Educators' Skill and ICT Integration in Online Teaching during the Pandemic Situation in India." *Library Philosophy and Practice* (e-journal) (2021).
- [6]. Kshirsagar, Pravin R., and Sudhir G. Akojwar. "Prediction of neurological disorders using optimized neural network." In 2016 International Conference on Signal Processing, Communication, Power and Embedded System (SCOPEs), pp. 1695-1699. IEEE, 2016.
- [7]. Leroy, Suzanne AG. "Pollen analysis of core DS7-1SC (Dead Sea) showing intertwined effects of climatic change and human activities in the Late Holocene." *Journal of Archaeological Science* 37, no. 2 (2010): 306-316.
- [8]. Kumar, Anil, Rajabov Sherzod Umurzoqovich, Nguyen Duc Duong, Pratik Kanani, Arulmani Kuppusamy, M. Praneesh, and Minh Ngyen Hieu. "An intrusion identification and prevention for cloud computing: From the perspective of deep learning." *Optik* 270 (2022): 170044.
- [9]. Vimala Saravanan, M. Ramachandran, Chandrasekar Raja, "A Study on Aircraft Structure and Application of Static Force", *REST Journal on Advances in Mechanical Engineering*, 1(1), (2022):1-6
- [10]. Chen, Peng-Ting. "Medical big data applications: Intertwined effects and effective resource allocation strategies identified through IRA-NRM analysis." *Technological Forecasting and Social Change* 130 (2018): 150-164.
- [11]. Fedriani, José M., Daniel Ayllón, T. Wiegand, and Volker Grimm. "Intertwined effects of defaunation, increased tree mortality and density compensation on seed dispersal." *Ecography* 43, no. 9 (2020): 1352-1363.
- [12]. Al-Wesabi, Fahd N., Areej A. Malibari, Anwer Mustafa Hilal, Nadhem NEMRI, Anil Kumar, and Deepak Gupta. "Intelligent ensemble of voting based solid fuel classification model for energy harvesting from agricultural residues." *Sustainable Energy Technologies and Assessments* 52 (2022): 102040.
- [13]. Subaveerapandiyan, A. "Awareness And Usage of Swayam Courses Among Library And Information Science Students: A Survey." *Library Philosophy and Practice* (e-journal) (2020).
- [14]. Collado, Silvia, HenkStaats, and Miguel A. Sorrel. "A relational model of perceived restorativeness: Intertwined effects of obligations, familiarity, security and parental supervision." *Journal of Environmental Psychology* 48 (2016): 24-32..
- [15]. Kshirsagar, Pravin, Akshay Pote, K. K. Paliwal, Vaibhav Hendre, Pranav Chippalkatti, and Nikhil Dhabekar. "A review on IOT based health care monitoring system." *ICCCE 2019* (2020): 95-100.
- [16]. Yogeesh, N. "Mathematical maxima program to show Corona (COVID-19) disease spread over a period." *TUMBE Group of International Journals* 3, no. 1 (2020).
- [17]. Khan, Mudassir. "Big data analytics emerging trends, technology and innovations for the future business in the global market." *International Journal of Scientific Research and Review* 8, no. 2 (2019): 745-750.
- [18]. Volpe, Joseph J. "Encephalopathy of congenital heart disease—destructive and developmental effects intertwined." *The Journal of pediatrics* 164, no. 5 (2014): 962-965.
- [19]. Chandra Prakash, RC. Narayanan, N. Ganesh, M. Ramachandran, S. Chinnasami, R. Rajeshwari. "A study on image processing with data analysis. "In AIP Conference Proceedings, vol. 2393, no. 1, p. 020225. AIP Publishing LLC, 2022.
- [20]. Kshirsagar, Pravin R., Anil N. Rakhonde, and Pranav Chippalkatti. "MRI image based brain tumor detection using machine learning." *Test Engineering and Management* 81 (2020): 3672-3680.
- [21]. Shahare, Neha S., and D. M. Yadav. "Feature Extraction Using GLSM for DDSM Mammogram Images." In *Computational Intelligence in Healthcare*, pp. 317-325. Springer, Cham, 2021.
- [22]. Suhasini, S., J. M. SheelaLavanya, M. Parameswari, G. Manikandan, and S. Gracia Nissi. "Input Based Resource Allocation in Motion Estimation using Re-configurable Architecture." In 2021 Fifth International Conference on I-SMAC (IoT in Social, Mobile, Analytics and Cloud)(I-SMAC), pp. 1091-1095. IEEE, 2021.
- [23]. Vimala Saravanan, M. Ramachandran, Manjula Selvam, "Interaction between Technical and Economic Benefits in Distributed Generation", *Electrical and Automation Engineering*, 1(2), (2022):83-91
- [24]. Gretarsson, Jon, Feng Li, Mingzhe Li, Ashish Samant, Huahui Wu, Mark Claypool, and Robert Kinicki. "Performance analysis of the intertwined effects between network layers for 802.11 g transmissions." In *Proceedings of the 1st ACM workshop on Wireless multimedia networking and performance modeling*, pp. 123-130. 2005.
- [25]. Nomani, Md Zafar Mahfooz, and Rehana Parveen. "Medico-legal insights into COVID-19 pandemic and the platter of health law reform in India." *International Journal of Pharmaceutical Research* (2020): 2328-2332.
- [26]. Bakker, Bernard LG, and Chueng-RyongJi. "Disentangling intertwined embedded states and spin effects in light-front quantization." *Physical Review D* 62, no. 7 (2000): 074014.
- [27]. Manikandan, G., and S. Srinivasan. "An efficient algorithm for mining spatially co-located moving objects." *American Journal of Applied Sciences* 10, no. 3 (2013): 195-208.
- [28]. Fegade, Vishal, M. Ramachandran, S. Madhu, C. Vimala, R. Kurinji Malar, and R. Rajeshwari. "A review on basalt fibre reinforced polymeric composite materials." In *AIP Conference Proceedings*, vol. 2393, no. 1, p. 020172. AIP Publishing LLC, 2022.



- [29]. William, P., N. Yogeesh, S. Vimala, and Pratik Gite. "Blockchain Technology for Data Privacy using Contract Mechanism for 5G Networks." In 2022 3rd International Conference on Intelligent Engineering and Management (ICIEM), pp. 461-465. IEEE, 2022.
- [30]. Akojwar, Sudhir G., and Pravin R. Kshirsagar. "Performance evolution of optimization techniques for mathematical benchmark functions." *International Journal of Computers* 1 (2016).
- [31]. Albuquerque, Edson X., Edna FR Pereira, ManickavasagomAlkondon, and Scott W. Rogers. "Mammalian nicotinic acetylcholine receptors: from structure to function." *Physiological reviews* (2009).
- [32]. Ganvir, N. N., and AD Jadhav SCOE. "Pune "Explore the Performance of the ARM Processor Using JPEG" *International Journal on Computer Science and Engineering.*" (2010).
- [33]. Manjula Selvam, M. Ramachandran, Vimala Saravanan, "Nelder–Mead Simplex Search Method - A Study", *Data Analytics and Artificial Intelligence*, 2(2), (2022):117-122
- [34]. Sekar, K. R., Mohd AnulHaq, Anil Kumar, R. Shalini, and S. Poojalaxmi. "An improved ranking methodology for malignant carcinoma in multicriterian decision making using hesitant VIKOR fuzzy." *Theoretical Computer Science* 929 (2022): 81-94.
- [35]. Belizário, José E., Joel Faintuch, and Miguel Garay-Malpartida. "Gut microbiomedysbiosis and immunometabolism: new frontiers for treatment of metabolic diseases." *Mediators of Inflammation* 2018 (2018).
- [36]. Gregory, Kate, and DiranBasmadjian. "An analysis of the contact phase of blood coagulation: effects of shear rate and surface are intertwined." *Annals of biomedical engineering* 22, no. 2 (1994): 184-193.
- [37]. Yogeesh, N. "Study on Clustering Method Based on K-Means Algorithm." *Journal of Advances and Scholarly Researches in Allied Education (JASRAE)* 17, no. 1 (2020).
- [38]. Manikandan, G., and S. Srinivasan. "Mining spatially co-located objects from vehicle moving data." *Eur J Sci Res* 68, no. 3 (2012): 352-366.
- [39]. Gupta, Krishnakumar, Vishal Fegade, Jeevan Kittur, M. Ramachandran, S. Madhu, S. Chinnasami, and M. Amudha. "A review on effect of cooling rate in fiber reinforced polymeric composites." In *AIP Conference Proceedings*, vol. 2393, no. 1, p. 020106. AIP Publishing LLC, 2022.
- [40]. Volpe, Joseph J. "The encephalopathy of prematurity—brain injury and impaired brain development inextricably intertwined." In *Seminars in pediatric neurology*, vol. 16, no. 4, pp. 167-178. WB Saunders, 2009.
- [41]. Aminudin, Nur, EniSundari, K. Shankar, P. Deepalakshmi, Rita IrvianiFauzi, and AndinoMaselena. "Weighted Product and its application to measure employee performance." *International Journal of Engineering & Technology* 7, no. 2.26 (2018): 102-108.
- [42]. Dr. N. subash, M. Ramachandran, Vimala Saravanan, Vidhya prasanth, "An Investigation on Tabu Search Algorithms Optimization", *Electrical and Automation Engineering*, 1(1), (2022):13-20
- [43]. Akojwar, Dr Sudhir, Pravin Kshirsagar, and Vijetalaxmi Pai. "Feature extraction of EEG signals using wavelet and principal component analysis." In *National Conference on Research Trends In Electronics, Computer Science & Information Technology and Doctoral Research Meet.* 2014.
- [44]. Mateo, José Ramón San Cristóbal. "Weighted sum method and weighted product method." In *Multi criteria analysis in the renewable energy industry*, pp. 19-22. Springer, London, 2012.
- [45]. Revathy, G., Saleh A. Alghamdi, Sultan M. Alahmari, Saud R. Yonbawi, Anil Kumar, and Mohd Anul Haq. "Sentiment analysis using machine learning: Progress in the machine intelligence for data science." *Sustainable Energy Technologies and Assessments* 53 (2022): 102557.
- [46]. Ganvir, Neha N., and D. M. Yadav. "Clustered Micro-Calcifications Extraction From Mammogram Images Using Cellular Automata Segmentation With Anisotropic Diffusion Filtering." *International Journal of Scientific & Technology Research.* ISSN: 2277-8616.
- [47]. Nomani, Md Zafar Mahfooz, and Rehana Parveen. "Prevention of chronic diseases in climate change scenario in India." *Environmental justice* 13, no. 4 (2020): 97-100.
- [48]. Fitriari, Novi Sofia, SyifaAfifahFitriani, and Rosa ArianiSukamto. "Comparison of weighted product method and technique for order preference by similarity to ideal solution method: Complexity and accuracy." In *2017 3rd International Conference on Science in Information Technology (ICSITech)*, pp. 453-458. IEEE, 2017.
- [49]. Yogeesh, N. "Mathematical approach to representation of locations using k-means clustering algorithm." *International Journal of Mathematics And its Applications* 9, no. 1 (2021): 127-136.
- [50]. Divayana, D. G. H., A. Adiarta, and I. B. G. S. Abadi. "Initial draft of CSE-UCLA evaluation model based on weighted product in order to optimize digital library services in computer college in Bali." In *IOP Conference Series: Materials Science and Engineering*, vol. 296, no. 1, p. 012003. IOP Publishing, 2018.
- [51]. Krishna Kumar TP, M. Ramachandran, Vimala Saravanan, "Candidate Selection for a Project Using Weight Sum Method", *Data Analytics and Artificial Intelligence*, 1(1), (2021):53-59
- [52]. Manikandan, G., and S. Srinivasan. "Mining of spatial co-location pattern implementation by FP growth." *Ind. J. Comput. Sci. Eng* 3 (2012): 344-348.
- [53]. Fegade, Vishal, Krishnakumar Gupta, M. Ramachandran, S. Madhu, C. Sathiyaraj, R. Kurinji< alar, and M. Amudha. "A study on various fire retardant additives used for fire reinforced polymeric composites." In *AIP Conference Proceedings*, vol. 2393, no. 1, p. 020107. AIP Publishing LLC, 2022.
- [54]. Subaveerapandiyam, A., and Priyanka Sinha. "Digital Literacy and Reading Habits of The DMI-St. Eugene University Students." *Journal of Indian Library Association* 58, no. 3 (2022): 195-208.

- [55]. Listyaningsih, Vicky, HendraSetiawan, EkoSudrajat, and Ryan PutrandaKristianto. "DssPemilihanPenerimaBantuanPerbaikanRumahDenganMetode WEIGHTED PRODUCT." SEMNASTEKNOMEDIA ONLINE 5, no. 1 (2017): 3-5.
- [56]. Nomani, M. Z. M., and Madiha Tahreem. "Constitutionality and legality of corona virus (COVID-19) in India: limits of sanction and extent of liberation." International journal on emerging technologies 11, no. 3 (2020): 14-18.
- [57]. Ganvir, Neha N., and D. M. Yadav. "Filtering method for pre-processing mammogram images for breast cancer detection." International Journal of Engineering and Advanced Technology. ISSN (2019): 2249-8958.
- [58]. Kumar, Anil, Saleh A. Alghamdi, Abolfazl Mehbodniya, Julian L. Webber, and Shavkatov Navruzбек Shavkatovich. "Smart power consumption management and alert system using IoT on big data." Sustainable Energy Technologies and Assessments 53 (2022): 102555.
- [59]. Krishna Kumar TP, M. Ramachandran, Vimala Saravanan, "A Risk Assessment of Emergency management using (WASPAS) MCDM Method", Recent trends in Management and Commerce, 2(3), (2022):36-43
- [60]. Khairina, Dyna Marisa, Muhammad ReskiAsrian, and HelizaRahmaniaHatta. "Decision support system for new employee recruitment using weighted product method." In 2016 3rd International Conference on Information Technology, Computer, and Electrical Engineering (ICITACEE), pp. 297-301. IEEE, 2016.
- [61]. Bhuvaneswari, G., and G. Manikandan. "An intelligent intrusion detection system for secure wireless communication using IPSO and negative selection classifier." Cluster Computing 22, no. 5 (2019): 12429-12441.
- [62]. Subaveerapandiyan, A., Priyanka Sinha, and Jeremiah Emeka Emeka Ugwulebo. "Digital literacy skills among African library and information science professionals—an exploratory study." Global Knowledge, Memory and Communication ahead-of-print (2022).
- [63]. Nomani, M. Z. M., and Zafar Hussain. "Innovation technology in health care management in the context of Indian environmental planning and sustainable development." International journal on emerging technologies 11, no. 2 (2020): 560-564.
- [64]. Boltürk, Eda, Ali Karışan, and CengizKahraman. "Simple additive weighting and weighted product methods using neutrosophic sets." In Fuzzy Multi-criteria Decision-Making Using Neutrosophic Sets, pp. 647-676. Springer, Cham, 2019.
- [65]. Kumar Pandey, Rakesh, Shrey Aggarwal, Griesha Nath, Anil Kumar, and Behzad Vaferi. "Metaheuristic algorithm integrated neural networks for well-test analyses of petroleum reservoirs." Scientific Reports 12, no. 1 (2022): 1-16.
- [66]. Bidgar, Poonam, and Neha Shahare. "Key based visual cryptography scheme using novel secret sharing technique with steganography." IOSR J. Electron. Commun. Eng.(IOSR-JECE) 8, no. 2 (2013): 11-18.
- [67]. Deepa, N., Asmat Parveen, Anjum Khurshid, M. Ramachandran, C. Sathiyaraj, and C. Vimala. "A study on issues and preventive measures taken to control Covid-19." In AIP Conference Proceedings, vol. 2393, no. 1, p. 020226. AIP Publishing LLC, 2022.
- [68]. Khan, Mudassir, and Mohd Dilshad Ansari. "Security and privacy issue of big data over the cloud computing: a comprehensive analysis." IJRTE-Scopus Indexed 7, no. 6s (2019): 413-417.
- [69]. Das, Bijoy, SumanSankarBhunia, Sarbani Roy, and Nandini Mukherjee. "Multi criteria routing in wireless sensor network using weighted product model and relative rating." In 2015 Applications and Innovations in Mobile Computing (AIMoC), pp. 132-136. IEEE, 2015.
- [70]. Khan, Mudassir, and Mohd Dilshad Ansari. "Multi-criteria software quality model selection based on divergence measure and score function." Journal of Intelligent & Fuzzy Systems 38, no. 3 (2020): 3179-3188.
- [71]. Subaveerapandiyan, A., and N. Sakthivel. "A Study of Obstacles in Plagiarism Software Subscribing by Colleges in Tamil Nadu." (2022).
- [72]. Nomani, M. Z. M., Ajaz Afzal Lone, Alaa KK Alhalboosi, Aijaj A. Raj, and Zubair Ahmed. "Health care services under consumer protection laws of union territories of Jammu and Kashmir: a socio-legal mapping." EXECUTIVE EDITOR 11, no. 01 (2020): 139.
- [73]. Tzeng, Gwo-Hshiung, Cheng-Hsin Chiang, and Chung-Wei Li. "Evaluating intertwined effects in e-learning programs: A novel hybrid MCDM model based on factor analysis and DEMATEL." Expert systems with Applications 32, no. 4 (2007): 1028-1044.