



## Data Analytics and Artificial Intelligence

Vol: 1(1), 2021

REST Publisher

ISBN: 978-81-948459-4-2

Website: <http://restpublisher.com/book-series/data-analytics-and-artificial-intelligence>

# Candidate Selection for a Project Using Weight Sum Method

<sup>1</sup>Krishna Kumar TP, <sup>2</sup>M. Ramachandran, <sup>2</sup>Vimala Saravanan

<sup>1</sup>Nehru School of Management @ NCERC, Pamapady, Thiruvilwamala, Thrissur, Kerala, India.

<sup>2</sup>REST Labs, Kaveripattinam, Krishnagiri, TamilNadu, India.

\*Corresponding author Email: [tpk683@gmail.com](mailto:tpk683@gmail.com)

## Abstract

In this paper we used the white sum technique; In the weighted sum method, we degree our goals as a non-marital motive by using multiplying each of our intentions by means of the weight furnished by way of the character. This approach is one of the maximum broadly used techniques. One question that entails thoughts whilst doing a weighted sum system is what weights have to be assigned to every cause. To locate the weighted common, multiply each amount with the aid of its weight and then add the effects. If the weights no longer suit, multiply the sum of all the variables by means of their weight and divide via the sum of the weights. The sum of operations is achieved with the aid of multiplying the assigned section values for each enter raster by a given weight. It integrates all the input lists to create the output raster. The weight sum device is much like a weight overlay tool. There are five to seven steps in an ordinary employee choice procedure. The genuine steps will range depending at the employer, however the basics consist of pronouncing, reviewing tasks, choosing applicants, interviewing and finalizing, screening and presenting. Project Candidate is a potential Y3H goal or authorized Y3H goal or any substance or compound this is the end result of directed or modified genetic studies effort. We take candidate 1, candidate 2, candidate three candidate four, candidate 5, candidate 6, candidate 7, candidate eight, candidate nine, and candidate 10 as options. We took causal factors evaluation 1, causal factors assessment 2, effect factors assessment 1 and causal elements analysis 2 as evaluative assessment. Finally, the values display improved and decreased values. The WSM approach determines the short-distance and lengthy-distance reaction from the scare-number one answer, however estimating those distances isn't always usually considered big. As an end result, candidate 7 received a primary score and candidate three received a final score.

## Introduction

Candidate selection is the method of finding the right man or woman to fill the role given to your company. It covers all the steps from preliminary resume screening to final hiring selection and operational instruction. It consists of skill tests, interviews and background tests. Selection is the process of selecting the most suitable candidates from the functional applicants. It is a process of awarding jobs to the right applicants. Once qualified applicants are approved, the next step is to evaluate and select their qualifications, features, experience, skills and more. The option is to select the most suitable applicant for the vacant position in the recruitment. In other words, selection is the determination of individuals with key qualifications and skills to eliminate ineligible applicants and fill vacancies within the organization. The selection process is described as a technique of selecting suitable applicants with the required qualifications and skills to fill the vacancies in a company. The selection process will vary from industry to industry, company to company and sectoral companies. The primary candidate for the position of "Manager of the Year" is the person who nominates or wishes to nominate a candidate for the position, member or governor. Weight Joint Approach We graduate a set of our unfulfilled desires by multiply every of our dreams via the load provided via the user. This technique is one of the maximum extensively used approaches. One query that comes to thoughts when doing a weight dimension approach is defining what weights need to be assigned to each cause. Where X is the answer variable and W is the load variable. The solution variable and the load variables must have an equal number of observations. For this command, weights are not normalized. In calculating the weighted generic, each limit in the information set is multiplied by the pre-determined weight of the final calculation.

## Selection of Candidate for a Project

Candidate structures that shape the dynamics of a nearby organization of galaxies. We consider the constellations are favorable to the overall mass of this pair. However, this big mass makes it hard to compromise at the pair's especially small touch speeds, with little cut price at the Hubble Drift observed on LG individuals over lengthy distances. The common weights of clean pairs that suit those three standards, in spite of the massive scatter, are normally smaller than those recommended by the point argument. Guided by those results, we selected the general elliptical pairs for the APOSTLE (Local Environmental Simulation Project), a hard and fast of hydrodynamic resolutions in unique numerical very last ranges of sub-segment physics evolved for the EAGLE venture. . These simulations, through creation, recreate the core dynamics of the MW-M31 pair, and make satellite TV the right solution for tracking the overall variety, brightness, and dynamics of

satellite TV for computer. M31 Allies. APOSTLE Candidate Structures provides the fine take a look at unit to face many predictions about bloodless darkish number cosmology without delay Includes interactions with our local Universe candidate assignment parameters, useful resource constraints, or special interrelated packages. Next, every category is considered individually. Appropriate techniques for every segment are described with the help of a sequence of proposals outlining the necessities for coping with the impact of that section inside the formal portfolio selection framework, which should be described within the following section approximately candidate strategies or their desire. Must read new ones. One. Attitudes. The formal selection degree is usually no longer repeated until the committee finds other techniques related to the applicant's choices along with his or her applications. Considering the interdependence among those criteria, the valuable value saves money and presents more benefits to companies. When evaluating project problems, it's far crucial to consciousness on a hard and fast idea due to the fact it's far essential to apprehend the relationship among criteria and standards inside allocation problems. To collect the institution's perspectives on interrelated issues, we use the expert interview candidate software, after which the scorer will get hold of an evaluation based ordinarily on each criterion. The sum of the weighted estimates for each assignment is the comparative cost of the task. What is function of this method is that it affords the pleasant trouble in determining the masses, while a few different method in managing the weight-dedication system is a hierarchical set of candidate selection procedures that contribute to the candidate's upward thrust and fall. . Literature. Preferred institutionalized democracies. First, it affords the exterior of the former literature with private emphasis on identifying present day hypotheses in candidate choice techniques. Second, it clarifies why medieval politics controls legislative candidate choice techniques in a different way as compared to institutionalized democracies. Third, numerous hypotheses derived from the literature show that there are greater limitations to accepting the duration between legislative candidate selection processes than in institutionalized democracies. Candidate choice is an interactive method wherein each candidate and activist has an effect on the choices made in different corporations. This version is designed to discover the one-of-a-kind implications of precise establishments - British political events - and the selection procedure for students who have used the edition to consider the theoretical and systematic discoveries of the next generation and what might be completed in a kind of unique manner. Candidates on behalf are banging. If there is democracy compared to the restaurant wherein clients (residents) order from the menu of events and applicants, figuring out which candidates must be on the poll is like sorting the menu - now not sudden. Voting takes vicinity inside the trendy election. In other words, the subject may be very important, yet considering the shortage of students and pundits, nobody can guess that this can assist the candidates to higher achieve their election, organizational and coverage desires. Precisely, activities have to stability applicants' capacity to generate insurance with different factors of candidate super, inclusive of electoral credibility. We use the exceptional variation of applicants and events in European elections to discover this business. We are creating a statistical model to peer how parties facing exceptional strategic contexts integrate the voter list into a modern day database that describes the political history of the applicants walking within the 2009 European Parliament elections. Communicate well with diverse people, maintain a good perspective, express different vocabulary, adapt your language to your audience, listen effectively, present your ideas clearly and concisely, and perform well in a team. . In order to acquire a personality trait, individuals need to adapt somewhat to the role-related circumstances in their behavior. For example, if they can talk at home, they can talk at work. Behaviors of individuals with a trait may be somewhat consistent over time. You learn through experience the process of living through an event or events. The skill or knowledge gained by actually doing a thing requires someone with experience for that job. Someone told us about an experience like actually flying or living on a plane. Self-confidence is an attitude about your skills and abilities. It means you accept yourself and trust yourself and feel that your life is under your control. You are well aware of your strengths and weaknesses and have a positive outlook on yourself. You set realistic expectations and goals, communicate with confidence, and handle criticism.

### **Weight Sum Method (WSM)**

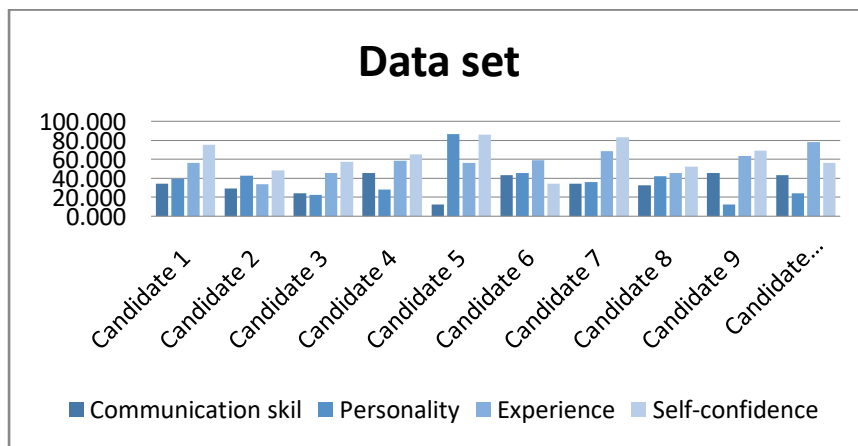
Gadget (WSM) collection is a multi-level selection-making approach for weighing the outcomes; a sensitivity analysis is carried out in this paper. In a weighed sum device, the rating of an opportunity is equal to the sum of its estimated values, wherein weights are the primary weights relative to every belonging. In a weighted manufacturing device, universal overall performance rankings amplify the characteristic importance of usual overall performance rankings and emphasize the energy of weight in preference to calculating sub-scores. Weighing method and product sketches awareness on weight choice. When we load, the extraction may be finished by using addition, multiplication and sorting, that is quite simple for a contemporary pc. See consequences, the proposed technical weight suggests the overall performance of the tool and subsequently the multiplication, addition and subtraction inside the actual extraction gadget. Therefore, we've stated how they are formatted and targeted. In order to take gain of the weight of 4 dimensional item vectors, we're losing the worst weight vector weight reduction primarily based at the weight loss issue within the global surroundings. Common thoughts for lowering load on vehicle frame structures encompass strain scattering and load scattering. These techniques are aimed toward lowering weight and increasing stress and electricity. The weight-sum method, in which Barrio seeks number one answers by way of systematically changing weights into objective capabilities. In preceding research, Burrito continued to produce poorly dispensed answers at the front web page, and Barito did no longer discover the highest first-class responses in unsatisfactory regions. The proposed Adaptive Weight Sum device makes a specialty of areas which are no longer explored via adjusting the favored weights to use precision weight converters. As a result, the burden perception of the gadget in homes has a protracted-term impact. However, whilst many posted projects and literature for this method cope with its shortcomings in portraying Barito's masterpiece, there can be no special discussion of the conceptual significance of weights and strategies to enhance the performance of the method. The Weighted Sum Pad Algorithm (WS-BA) is used to pick out the optimum

aggregate of pre-publicity, horizontal and vertical target angles for luminaires in the ones fashions. The proposed machine is used in a cutting-edge tennis court docket. Checks are simulated to the one of a kind limits of horizontal and vertical lighting fittings. According to design standards, all lights parameters are met. Comparative analysis has now located the excellent basic performance, and is the basic causal evaluation method used to file all actions and conditions (or causal factors) as important and sufficiently logical, in a tree-primarily based hierarchy. Factor evaluation is a method used to reduce the massive range of variables for a particular effect to occur. This technique separates the most commonplace variance from all the variables and suggests them as a remarkable rating. As a code for all variables, this score can be used for comparable evaluation

**TABLE 1.** Data Set

	Communication skill	Personality	Experience	Self-confidence
<b>Candidate 1</b>	34.360	39.530	56.360	75.360
<b>Candidate2</b>	29.120	42.970	33.690	48.360
<b>Candidate3</b>	24.080	22.580	45.360	57.120
<b>Candidate4</b>	45.230	28.280	58.470	65.420
<b>Candidate5</b>	12.430	86.410	56.360	86.140
<b>Candidate6</b>	43.12	45.36	58.74	34.15
<b>Candidate7</b>	34.53000	36.12000	68.45000	83.04000
<b>Candidate8</b>	32.45000	42.13000	45.36000	52.47000
<b>Candidate9</b>	45.36000	12.45000	63.23000	69.36000
<b>Candidate10</b>	43.12000	24.15000	78.36000	56.23000

Table 1 shown that the value about the data set for Candidate1, Candidate2, Candidate3, Candidate4, Candidate5, Candidate6, Candidate7, Candidate8, Candidate9, and Candidate10. We have to fill the values on the given tabulation.



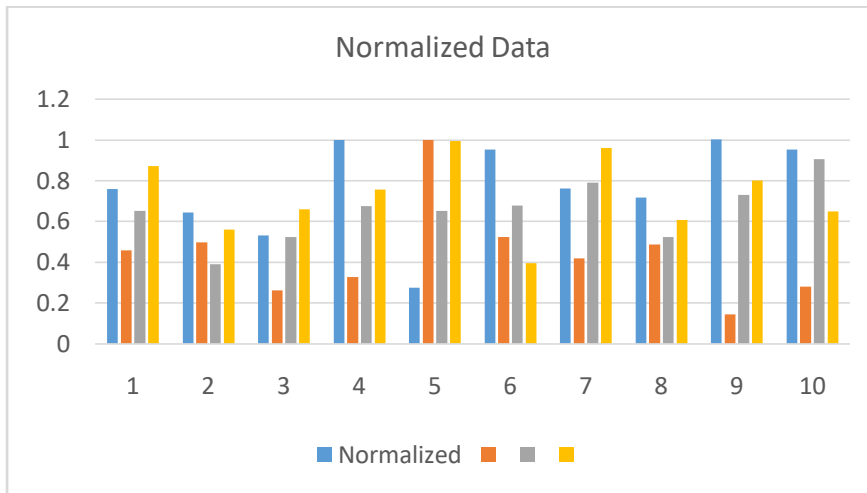
**FIGURE 1.** Data Set

Figure 1 shown that the value about the data set for Candidate1, Candidate2, Candidate3, Candidate4, Candidate5, Candidate6, Candidate7, Candidate8, Candidate9, and Candidate10 in graph model. Candidate5 got high cause factors analysis 1 than the Candidate 4 and Candidate 9. Candidate5 got high effect factors analysis 2 than the Candidate1.

**TABLE 2.** Normalized Data

Normalized			
0.75967	0.45747	0.65224	0.87212
0.64382	0.49728	0.38989	0.55966
0.53239	0.26131	0.52494	0.66103
1	0.32728	0.67666	0.75709
0.27482	1	0.65224	0.99688
0.95335	0.52494	0.67978	0.39521
0.76343	0.41801	0.79215	0.961
0.71744	0.48756	0.52494	0.60722
1.00287	0.14408	0.73174	0.80268
0.95335	0.27948	0.90684	0.65073

Table 2 shown that the values about the normalized data for Candidate1, Candidate2, Candidate3, Candidate4, Candidate5, Candidate6, Candidate7, Candidate8, Candidate9, and Candidate10. These values are calculated using by the various methods of formulas.



**FIGURE 2.**Normalized Data

Figure 2 shown that the values about the normalized data forCandidate1, Candidate2, Candidate3, Candidate4, Candidate5, Candidate6, Candidate7, Candidate8, Candidate9, and Candidate10 in graph method. These values are calculated using by the formulas.

**TABLE 3.**Weighted normalized decision matrix

Weighted normalized decision matrix			
0.18992	0.11437	0.16306	0.21803
0.16096	0.12432	0.09747	0.13991
0.1331	0.06533	0.13123	0.16526
0.25	0.08182	0.16916	0.18927
0.0687	0.25	0.16306	0.24922
0.23834	0.13123	0.16995	0.0988
0.19086	0.1045	0.19804	0.24025
0.17936	0.12189	0.13123	0.15181
0.25072	0.03602	0.18294	0.20067
0.23834	0.06987	0.22671	0.16268

Table 3 shown that the values about Weighted normalized decision matrix that was calculated using by various methods of formulas.

**TABLE 4.** Preference Score

	Preference Score	Rank
Candidate1	0.68538	5
Candidate2	0.52266	9
Candidate3	0.49492	10
Candidate4	0.69026	4
Candidate5	0.73098	2
Candidate6	0.63832	7
Candidate7	0.73365	1
Candidate8	0.58429	8
Candidate9	0.67035	6
Candidate10	0.6976	3

Table 5 shown that the values about the preference score and rank. These values are calculated using by the calculations.

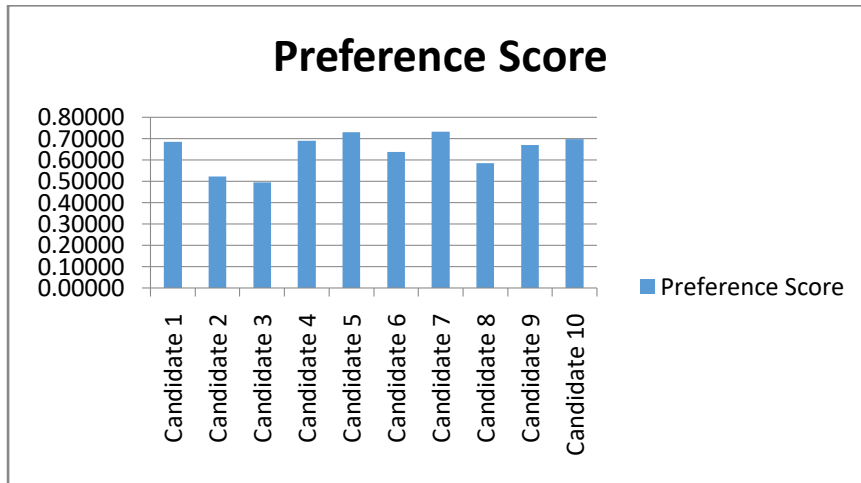


FIGURE 3. Preference score

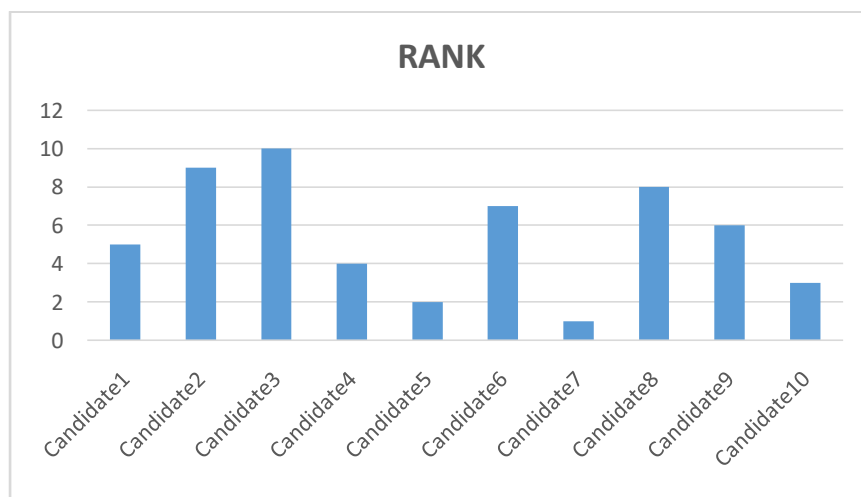


FIGURE 4. Rank

Figure 3 and 4 shown that the values about the preference score and ranking graph method.Candidate 7 got first rank and Candidate3 got last rank

### Conclusion

This technique is one of the most widely used practices. One question that comes to mind whilst doing a weighted sum system is what weights must be assigned to every reason. To find the most commonplace ones through weight, multiply each class by way of its weight and then upload the consequences. To trade the final ranking of options, the result states that the minimal conversion rate is 8. Fifty-two%. The techniques applicable to every diploma are described first, accompanied by using a chain of proposals outlining the requirements for handling the impact of that manner on the proper portfolio choice framework that implements the candidate techniques. The following segment. The formal selection stage is commonly not repeated until the applicant has revealed to the panel the various strategies which might be most applicable to their opportunities with the application. Considering the interdependence between those criteria, the treasure rate gives companies monetary savings and further advantages. Final Estimated Price Candidate received 7 Primary Rating and Candidate 3 obtained Final Rating.

### Reference

1. Fattahi, Azadeh, Julio F. Navarro, Till Sawala, Carlos S. Frenk, Kyle A. Oman, Robert A. Crain, Michelle Furlong et al. "The APOSTLE project: Local Group kinematic mass constraints and simulation candidate selection." *Monthly Notices of the Royal Astronomical Society* 457, no. 1 (2016): 844-856.
2. Archer, Norm P., and FereidounGhasemzadeh. "An integrated framework for project portfolio selection." *International Journal of Project Management* 17, no. 4 (1999): 207-216.
3. Lee, Jin Woo, and SoungHie Kim. "Using analytic network process and goal programming for interdependent information system project selection." *Computers & Operations Research* 27, no. 4 (2000): 367-382.

4. Ghasemzadeh, Fereidoun, and Norman P. Archer. "Project portfolio selection through decision support." *Decision support systems* 29, no. 1 (2000): 73-88.
5. Field, Bonnie N., and Peter M. Siavelis. "Candidate selection procedures in transitional polities: A research note." *Party Politics* 14, no. 5 (2008): 620-639.
6. Lovenduski, Joni. "The supply and demand model of candidate selection: some reflections." *Government and Opposition* 51, no. 3 (2016): 513-528.
7. Rahat, Gideon. "Candidate selection: The choice before the choice." *Journal of Democracy* 18, no. 1 (2007): 157-170.
8. Pemstein, Daniel, Stephen A. Meserve, and William T. Bernhard. "Brussels bound: Policy experience and candidate selection in European elections." *Comparative Political Studies* 48, no. 11 (2015): 1421-1453.
9. Mohaghegh, Shahab, Scott Reeves, and David Hill. "Development of an intelligent systems approach for restimulation candidate selection." In *SPE/CERI Gas Technology Symposium*. OnePetro, 2000.
10. Krishna Kumar TP, M. Ramachandran, Sathiyaraj Chinnasamy, "Exploring Various Applications of Block Chain Technology", *Recent trends in Management and Commerce*, 1(1), (2020): 92-96
11. Fishkin, James, Robert C. Luskin, John Panaretos, Alice Siu, and EvdokiaXekalaki. "Returning deliberative democracy to Athens: Deliberative polling for candidate selection." Available at SSRN 1142842 (2008).
12. Gondalia, Ravi Ramniklal, Amit Sharma, AbhishekShende, Amay Kumar Jha, Dinesh Choudhary, Vaibhav Gupta, Varun Shetty et al. "Evolution of Hydraulic Fracturing Operations & Technology Applications in India." In *International Petroleum Technology Conference*. OnePetro, 2021.
13. Mukku, Vinil, Tshering Lama, Sanjay Verma, Pankaj Kumar, Krishna Bordeori, Chandreyi Chatterjee, Arvind Kumar et al. "Increase in oil production: methodology & best practices for hydraulic fracturing candidate selection and execution in Assam-Arakan Basin." In *SPE Middle East Oil and Gas Show and Conference*. OnePetro, 2019.
14. Meserve, Stephen A., SivagaminathanPalani, and Daniel Pemstein. "Measuring candidate selection mechanisms in European elections: Comparing formal party rules to candidate survey responses." *European Union Politics* 19, no. 1 (2018): 185-202.
15. Meserve, Stephen A., SivagaminathanPalani, and Daniel Pemstein. "Measuring candidate selection mechanisms in European elections: Comparing formal party rules to candidate survey responses." *European Union Politics* 19, no. 1 (2018): 185-202.
16. Stocks, Michael. "The small molecule drug discovery process—from target selection to candidate selection." In *Introduction to biological and small molecule drug research and development*, pp. 81-126. Elsevier, 2013.
17. Kumar, Gaurav, and N. Parimala. "A sensitivity analysis on weight sum method MCDM approach for product recommendation." In *International Conference on Distributed Computing and Internet Technology*, pp. 185-193. Springer, Cham, 2019.
18. Krishna Kumar TP, M. Ramachandran, Kurinjimalar Ramu, "Understanding a Recent Trends in Block Chain Technology", *Recent trends in Management and Commerce*, 1(1), (2020): 87-91
19. Mateo, José Ramón San Cristóbal. "Weighted sum method and weighted product method." In *Multi criteria analysis in the renewable energy industry*, pp. 19-22. Springer, London, 2012.
20. Burns, John M., and Michael J. Clancy. "Weight sum formulae in Lie algebra representations." *Journal of Algebra* 257, no. 1 (2002): 1-12.
21. Jeong, Jihyeon, and Youngjin Park. "Arrangement of array microphones for hearing-aids based on delay-weight-sum beamforming methods." In *2014 14th International Conference on Control, Automation and Systems (ICCAS 2014)*, pp. 1540-1542. IEEE, 2014.
22. Liu, Wenshuo, and Wenxin Li. "To determine the weight in a weighted sum method for domain-specific keyword extraction." In *2009 International Conference on Computer Engineering and Technology*, vol. 1, pp. 11-15. IEEE, 2009.
23. Lindsten, Fredrik, Henrik Ohlsson, and LennartLjung. "Clustering using sum-of-norms regularization: With application to particle filter output computation." In *2011 IEEE Statistical Signal Processing Workshop (SSP)*, pp. 201-204. IEEE, 2011.
24. Naito, Tadashi, Hirokazu Kobayashi, YutaUrushiyama, and Kunihiro Takahashi. "Introduction of new concept U\* sum for evaluation of weight-efficient structure." *SAE International Journal of Passenger Cars-Electronic and Electrical Systems* 4, no. 2011-01-0061 (2011).
25. Krishna Kumar TP, M. Ramachandran, —A Review of Marine Current Energy and Types of Energy using MOORA Method, *REST Journal on Emerging trends in Modelling and Manufacturing*, 5(4), (2019):80-86.

26. Kim, Il Yong, and Oliver L. De Weck. "Adaptive weighted-sum method for bi-objective optimization: Pareto front generation." *Structural and multidisciplinary optimization* 29, no. 2 (2005): 149-158.
27. Marler, R. Timothy, and Jasbir S. Arora. "The weighted sum method for multi-objective optimization: new insights." *Structural and multidisciplinary optimization* 41, no. 6 (2010): 853-862.
28. Nath, Dipayan, and SaswatiMazumdar. "Weighted sum based outdoor sports lighting designing using meta-heuristic algorithms." In *2020 IEEE International Conference on Power Electronics, Smart Grid and Renewable Energy (PESGRE2020)*, pp. 1-7. IEEE, 2020.
29. Cheng, Yi-Ping, and Apollo Nain-Gen Chou. "Bi-level weights sum method for shock diagnosis." *Expert Systems with Applications* 38, no. 4 (2011): 4497-4504.
30. Li, Yongxin, Quanwei Yang, Tao Chang, Tao Qin, and Fenghe Wu. "Multi-load cases topological optimization by weighted sum method based on load case severity degree and ideality." *Advances in Mechanical Engineering* 12, no. 8 (2020): 1687814020947510.
31. Krishna Kumar TP, M.Ramachandran, —Using a ELECTRE MCDM method for Software Testing Techniques, *REST Journal on Emerging trends in Modelling and Manufacturing*, 5(4), (2019):87-95.
- Efanov, Dmitry, Valery Sapozhnikov, and Vladimir Sapozhnikov. "On one method of formation of optimum sum code for technical diagnostics systems." In *2016 IEEE East-West Design & Test Symposium (EWDTS)*, pp. 1-6. IEEE, 2016.
32. Ryu, Jong-hyun, Sujin Kim, and Hong Wan. "Pareto front approximation with adaptive weighted sum method in multiobjective simulation optimization." In *Proceedings of the 2009 Winter Simulation Conference (WSC)*, pp. 623-633. IEEE, 2009.
33. Wang, Rui, Zhongbao Zhou, HisaoIshibuchi, Tianjun Liao, and Tao Zhang. "Localized weighted sum method for many-objective optimization." *IEEE Transactions on Evolutionary Computation* 22, no. 1 (2016): 3-18.